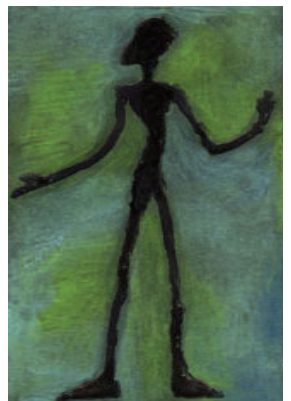
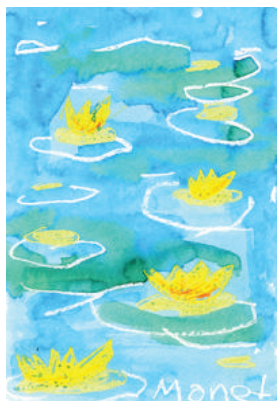
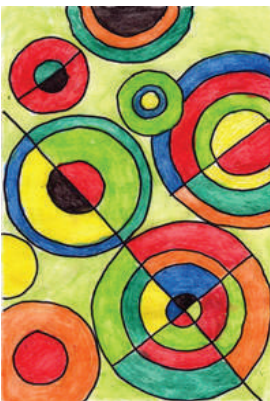


The Recycled Art Journal



Elements of Art Projects



Art Projects for Kids

TABLE OF CONTENTS

Elements of Art Samples	pages 3 - 4	The White House	page 20 - 21
Elements of Art Blank Templates	pages 5 - 6	Squishy Caterpillar	page 22
Romero Britto Cat	page 7	Cut & Tear City Buildings	page 23
Delaunay Circles	page 8	Layered Landscape	page 24
Giacometti Figure	page 9 - 10	Geometric to Organic	page 25 - 26
Robert Indiana	page 11	Contour Line Drawing	page 27
Klimt Tree of Life	page 12	Terrarium Painting	page 28 - 29
Magritte Eye	page 13	Marbles in Space	page 30
Matisse Painting	page 14	Country Barn	page 31
Miro Painting	page 15	La Boca Houses	page 32
Mondrian Collage	page 16	3D City Buildings	page 33
Monet's Water Lilies	page 17	Still Life Painting	page 34 - 35
Rothko Colors	page 18	Bug Collage	page 36
Frank Stella	page 19		

Make A Recycled Journal Cover

1. Start with a clean box, such as those used for cereal or art supplies. Use a paper cutter to cut two 6" x 9" panels from each box, one for the cover and one for the back.
2. Use a 2-hole punch found at office supply stores to make two centered holes on each panel.
3. Fill with book with projects that use 6" x 9" size paper, which is a standard 9" x 12" art paper cut in half.
4. Use 2 books rings to keep pages together. They are sometimes called binder rings and are also be found at office supply stores. For extra protection, cover with clear packing tape for a laminated look.



ELEMENTS OF ART

Line

SHAPE

FORM

Elements of Art

Artists combine art elements in different ways to create a work of art, much in the way that cooks use ingredients to make a new dish.

Below and on the next page are definitions of all seven Elements of Art. Note that in my sample, I have colored each element to reflect the meaning of the word itself.

Use my blank elements templates on pages 5 and 6 to make your own Elements of Art chart for your own art journal. For extra credit, see if you can come up with another texture to draw, other than the fuzzy one shown. Bumpy? Cracked? Prickly? It's always good to challenge yourself to think of your own ideas.

LINE: An element of art defined by a point moving in space.

SHAPE: An element of art that is two-dimensional.

FORM: An element of art that is three-dimensional and encloses volume.

Elements cont'd

SPACE

COLOR

VALUE

TEXTURE

SPACE: An element of art by which positive and negative areas are defined or a sense of depth is achieved in a work of art.

COLOR: An element of art made up of three properties: hue, value, and intensity.

VALUE: The lightness or darkness of tones or colors.

TEXTURE: An element of art that refers to the way things feel, or look as if they might feel if touched.

ELEMENTS OF ART

Line

SHAPE

FORM

SP
SAGE

COLOR

VALUE

TEXTURE



Romero Britto Cat

Elements of Art: Line, Shape, Color

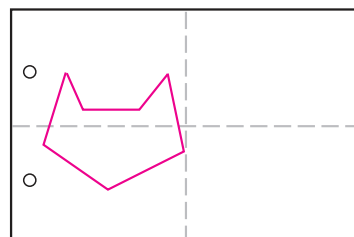
Romero Britto was born in Recife, Brazil in 1963. He grew up with eight brothers and sisters in a modest home and painted on used newspapers, cardboard or any scraps that he could find.

MATERIALS

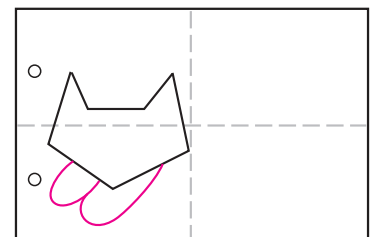
- Finger paint paper or drawing paper
- Chisel tip Sharpie, black
- Markers (I like the Stabilo brand)

INSTRUCTIONS

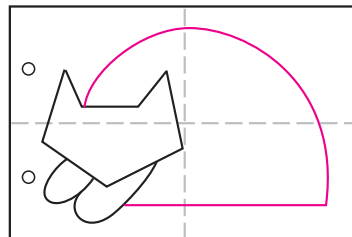
1. Follow the steps to draw a simple SHAPE of a cat.
2. Trace the LINES with a wide tip black marker.
3. COLOR in the cat with warm colors and the background with cool colors, or visa versa.
4. Add marker patterns on top of solid colors.



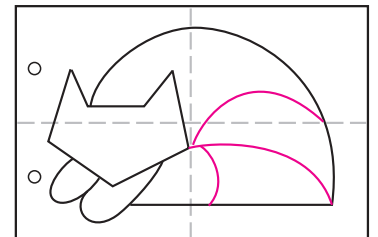
1. Fold paper for guides. Draw cat head.



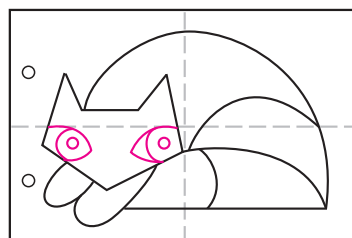
2. Draw two front feet.



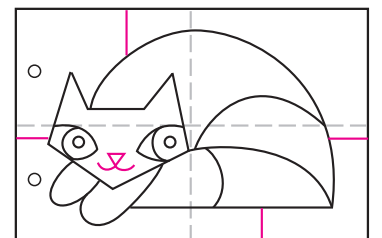
3. Draw the half circle body.



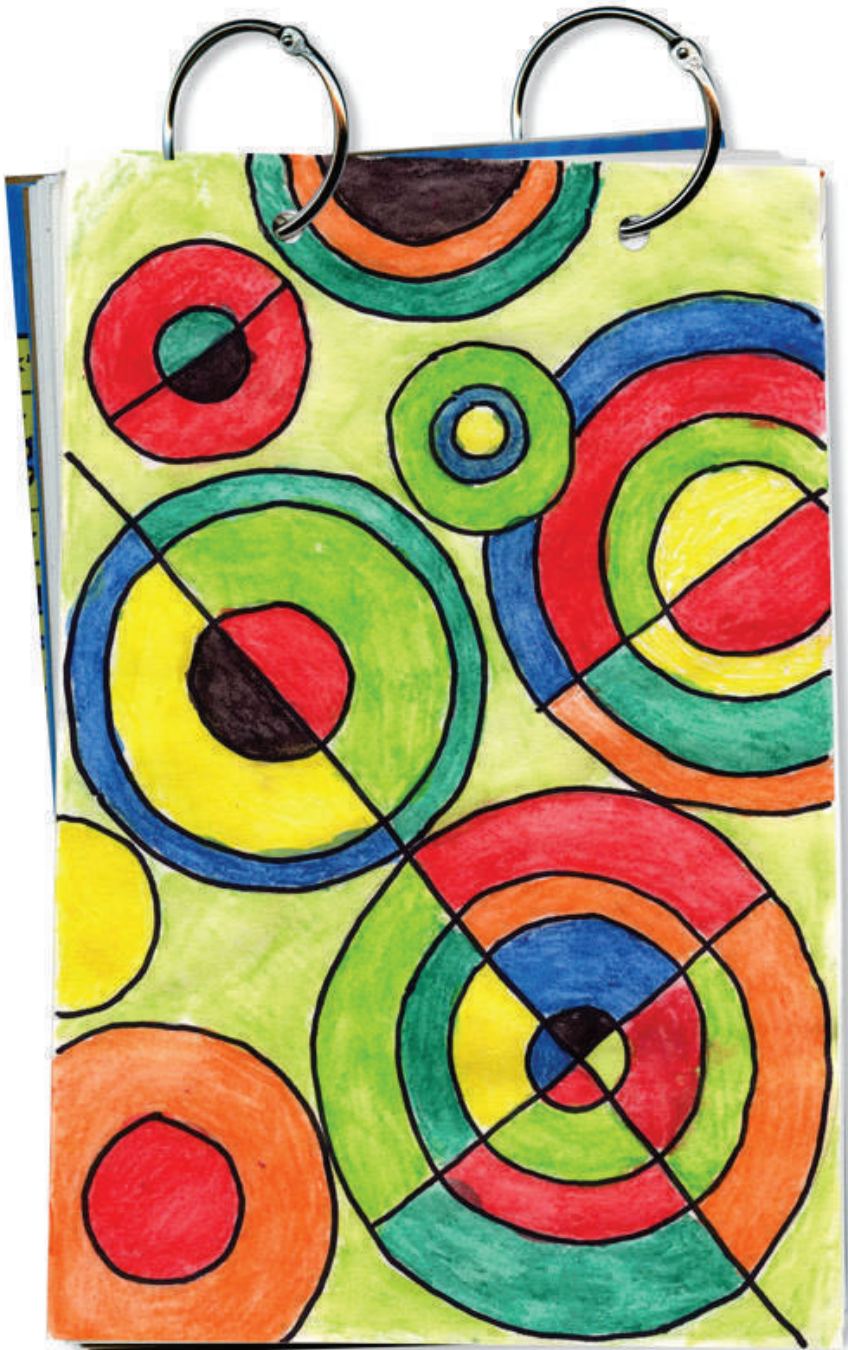
4. Draw the 3 curved lines in the body.



5. Add the eyes.



6. Draw mouth and background lines.



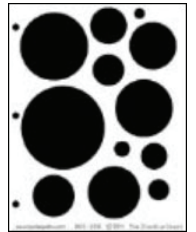
Delaunay Circles

Elements of Art: Line, Shape, Color

Sonia Delaunay (1885–1979) was a Jewish-French artist, famous for her use of strong colors and geometric shapes. She liked to paint, design fabrics and stage designs. Sonia was the first living female artist to have an exhibition at the Louvre in Paris in 1964.

DIRECTIONS

1. Fill a page with circle SHAPES. I found a great circle template at lauriespeltz.com (ask for the teacher discount) to help draw precise LINES.



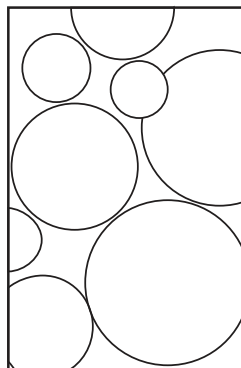
2. Fill each circle with concentric circles to make large and small SHAPED rings. TIP: The transparent circle template makes this easy to do.

3. Use a ruler to draw at least three LINES that dissect some of the circles.

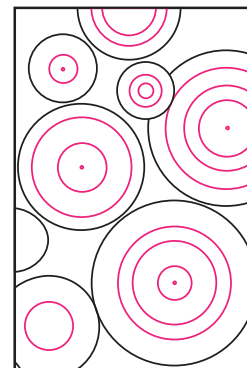
4. Trace the circles with a thin black permanent marker and COLOR. I used watercolor pencils and brushed with water for a painted look.

MATERIALS

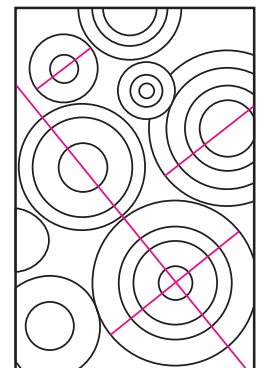
- Multimedia paper, 6" x 9"
- Circle template (see lauriespeltz.com)
- Ruler
- Black permanent marker
- Watercolor pencils or pencil crayons
- Paint brush and water



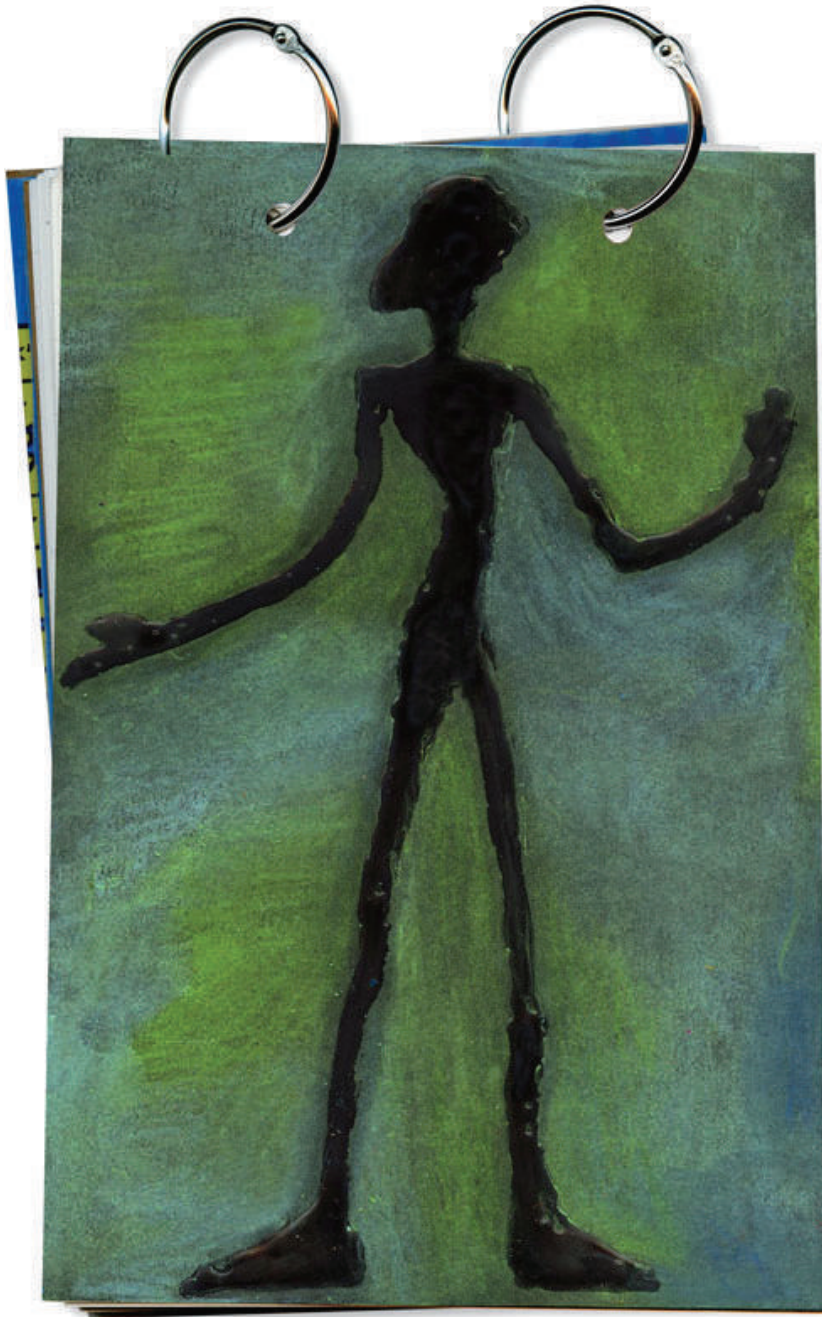
1. Fill the page with circles of all sizes.



2. Draw concentric circles inside each circle.



3. Split some circles in half with a ruler.



Giacometti Figure

Elements of Art: Line, Shape

Alberto Giacometti (1901-1966) was a Swiss sculptor, famous for his strangely elongated human forms. I've discovered that drawing his figures with glue is both easy AND the perfect medium to match the texture in his sculpture. The goal of the tutorial on the following page is to have students try different poses, but still create a figure with a thin and elongated look.



SESSION ONE

1. Students draw guidelines on a sheet of black cardstock or construction paper.
2. A figure is drawn as desired with a pencil.
3. The figure SHAPES are traced with LINES of glue. Note: I have found Elmer's purple glue to work even better than the white as it never gets cloudy. Allow drawing to dry on a totally flat surface until dry.

SESSION TWO

1. Students chose two or more chalk pastels and color randomly all over the paper. Important: the chalk must be blended with fingers to create a smooth look and to get color in all the edges close to the glue.
2. The glue figure itself is rubbed with a paper towel to remove chalk so that it stays black.
3. Spray with a fixative to minimize the dust.

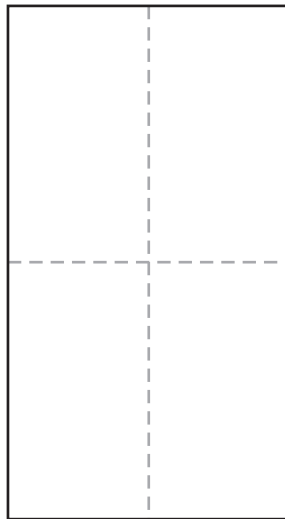
MATERIALS

- Black card stock paper, 6" x 9"
- White or purple Elmers glue
- Chalk pastel
- Fixative spray (optional)

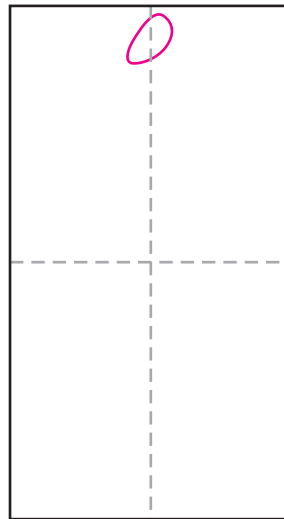




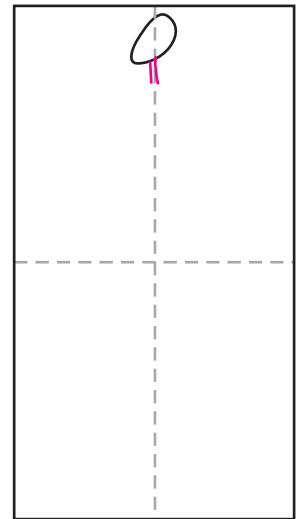
Giacometti's "Pointing Man"



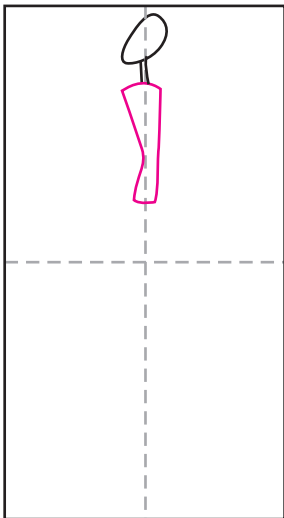
1. Guide lines, 6"x 9" paper



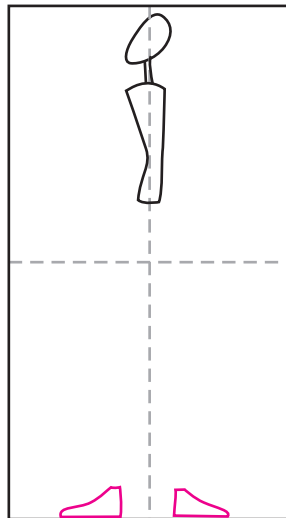
2. Draw head near top.



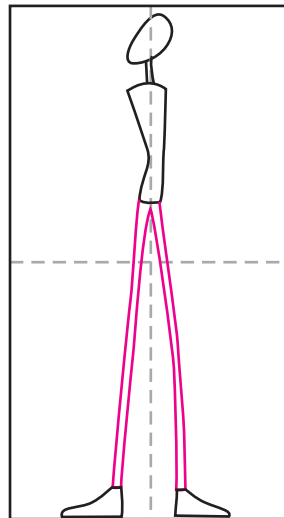
3. Add neck below.



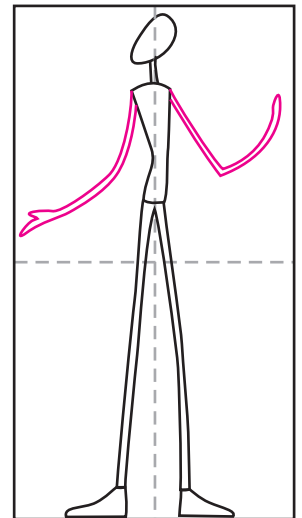
4. Add torso.



5. Draw feet.

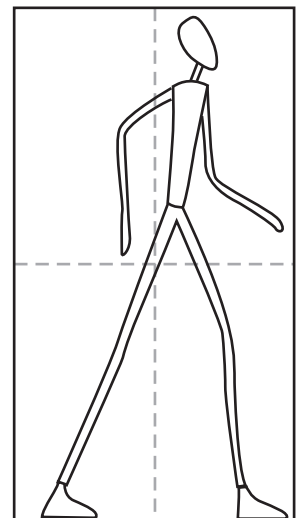
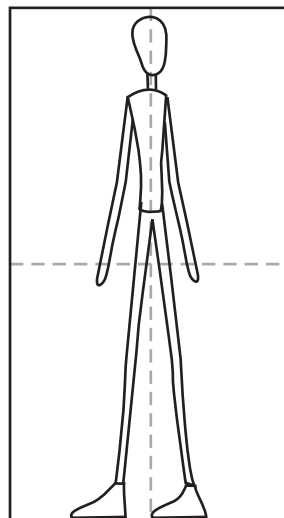
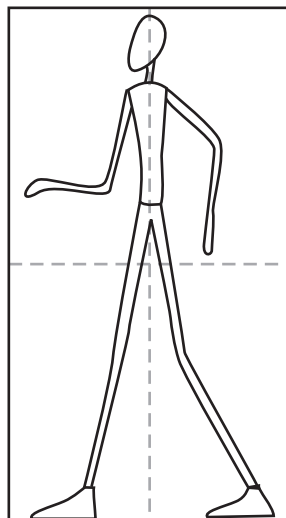
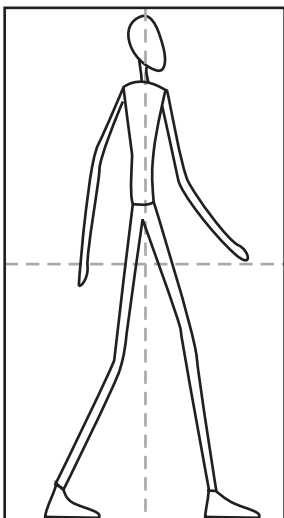


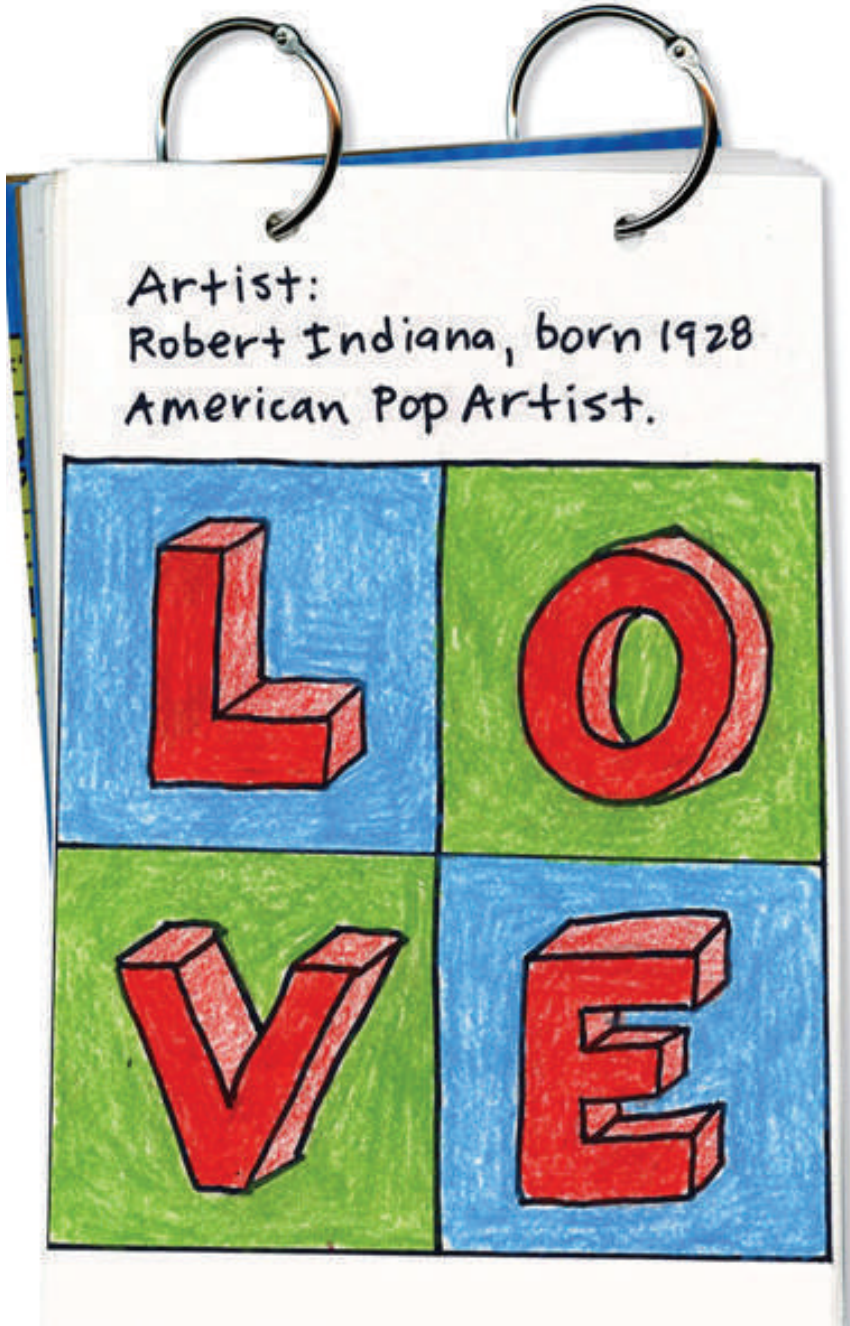
6. Connect torso, feet.



7. Add arms.

More Posing Options





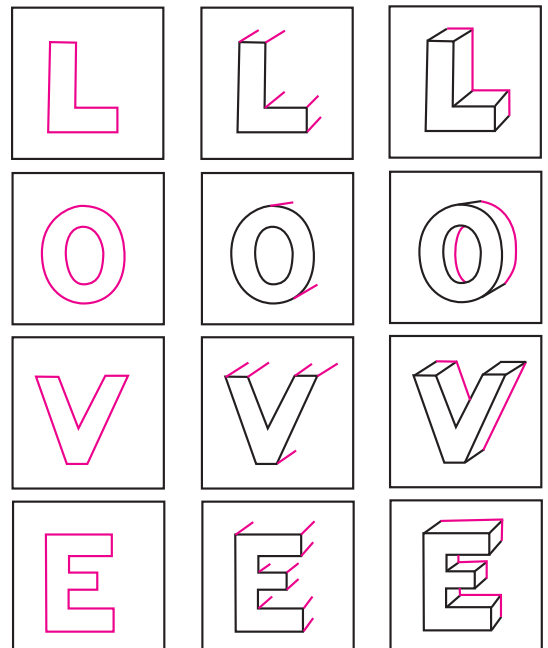
Robert Indiana

Elements of Art: Shape, Form, Value

Robert Indiana is an American artist associated with the pop art movement. Indiana's best known sculpture is one simply made of the word "LOVE" in upper-case letters, arranged in a square with a tilted letter O.

DIRECTIONS

1. Use a ruler to make two rows of 3" boxes as shown.
2. Draw the block letter SHAPES inside each box. Add the angled sides, then the back to create the 3D FORM as shown below. Trace with a marker.
3. Color the letters, changing the pressure on the sides versus the front to create a different VALUE. This will help make your letters more dimensional.



1. Draw letters. 2. Add sides. 3. Finish back edge.

MATERIALS

- Drawing paper, 6" x 9"
- Ruler
- Black marker
- Crayons or pencil crayons



Klimt Tree of Life

Elements of Art: Line, Color

Austrian painter Gustav Klimt was one of the most radical artists of the 20th century. His decorative style helped to push the boundaries of traditional art, and pave the way for the modern artists of the future.

Klimt was a deeply private character, who rarely wrote or talked about his art, preferring to let the paintings speak for themselves.

DIRECTIONS



1. Paint warm COLORS that overlap while still wet. Let dry.



2. Use a black Sharpie marker to make the large curly branch LINES. Thicken them and fill with black.



3. Add many medium size curly branch LINES.



4. Add many small curly branches while still keeping the over all tree balanced.

MATERIALS

- Watercolor paper, 6" x 9"
- Black Sharpie marker
- Liquid watercolor paint



Magritte Eye

Elements of Art: Shape, Form

René Magritte was a Belgian artist who made a number of witty and thought-provoking images that fall into the category of surrealism.

MATERIALS

- Drawing paper, 6" x 9"
- Old magazines
- Old CD for tracing
- Scissors
- Black marker
- Glue stick
- Pencil crayons

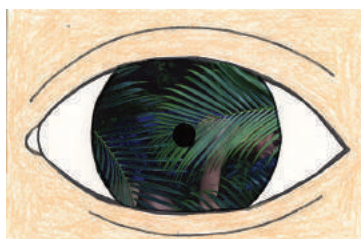
DIRECTIONS



1. Use CD to trace and cut out circle from magazine.



2. Trim circle as shown, glue to 6" x 9" paper and draw eye SHAPE around it.



3. Trace eye lines with a black marker. Use pencil crayon to fill in skin color.



4. Use dark pencil crayon to add FORM to the eye lids. Use a gray for shadows on the white of the eye.



Matisse Painting

Elements of Art: Line, Shape, Color

Henri Matisse (1869 - 1954) was a master of color. His decorative and expressive paintings revolutionized what many thought art could be.

1. Make still life drawing with simple SHAPES. Trace the LINES with a permanent black marker.
2. Use crayons to color the small flowers and leaves. Draw different line patterns on all the other surfaces. Keep them large and simple.
3. Use watercolor paint to fill in all the areas. I used the Crayola Watercolor Mixing Set because of its bright COLOR choices.



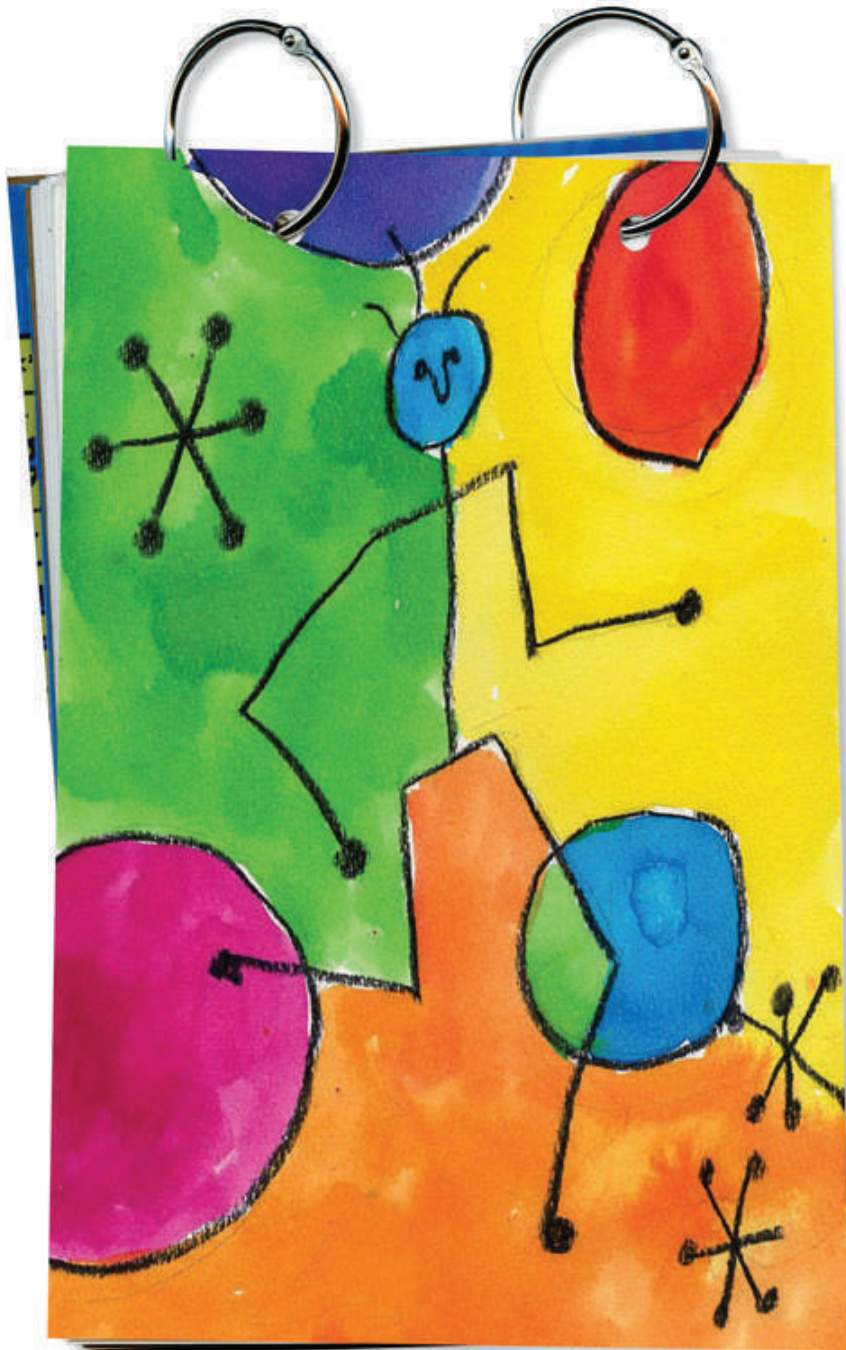
1. Draw a simple SHAPE vase with flowers. Add round table below. Draw wall and floor lines. Trace with a black marker.



2. Add patterns to all the areas with a crayon. Draw only LINES. Press hard so they will show through the paint. Paint over all with different COLORS of watercolor paint.

MATERIALS

- Watercolor paper, 6" x 9"
- Black Sharpie marker
- Crayons
- Watercolor paint (I used the Crayola Mixing Set)



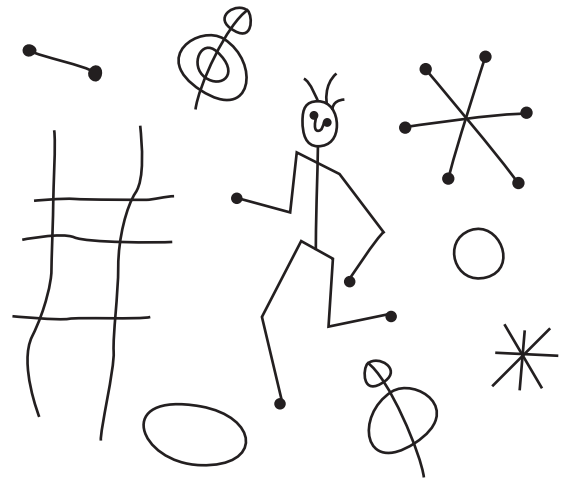
MATERIALS

- Watercolor paper, 6" x 9"
- Black crayon
- Liquid watercolor paint

Miro Painting

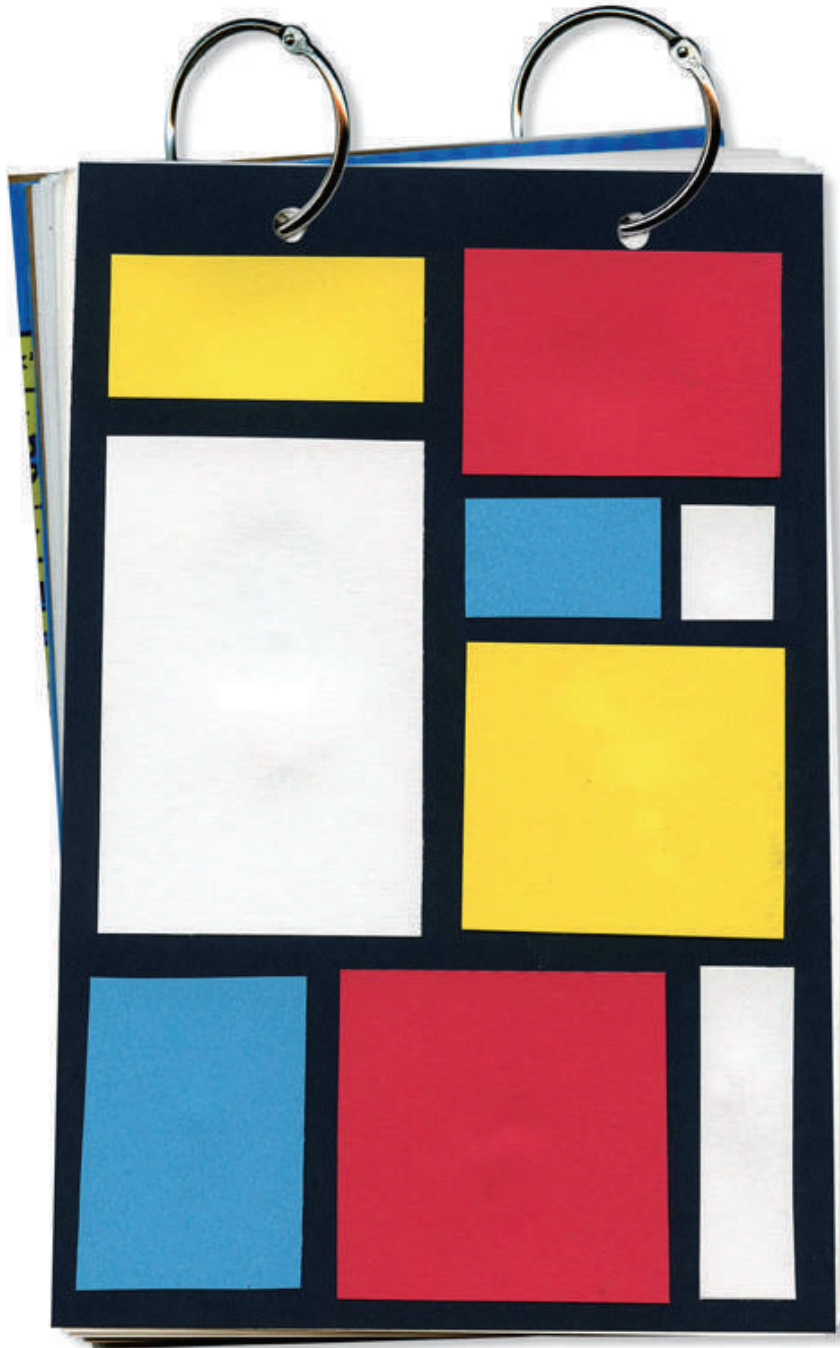
Elements of Art: Line, Shape, Color

Joan Miro was a Spanish artist who developed a whimsical style back in the 1930s. His painting called "People and Dog in Sun" is fun to imitate by drawing stick figures, stars and circles.



DIRECTIONS

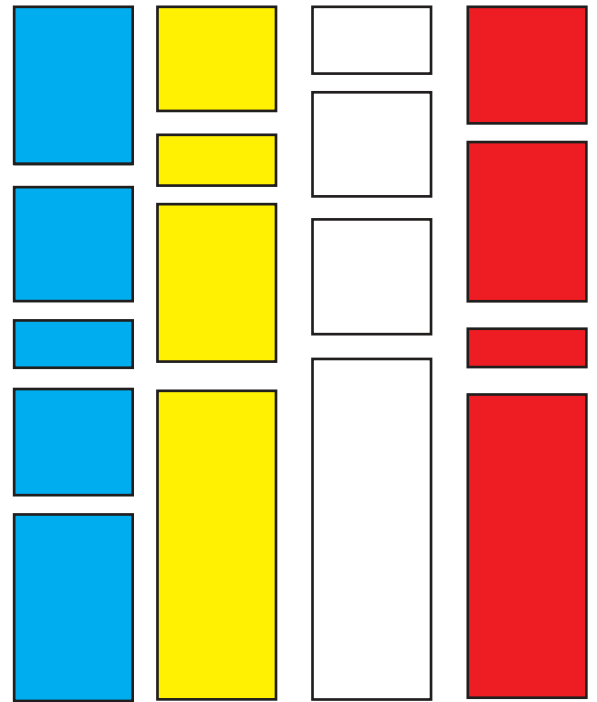
1. Draw one large stick figure with LINES in the middle of a sheet of watercolor paper, preferably in some action pose. Miro often repeated SHAPES in his work so add more to your art but only by using LINES. Try to make some shapes intersect (overlap) to make more closed shapes to color.
2. Trace the pencil drawing with a black crayon, pressing very hard to make a dark LINES.
3. Use watercolors to COLOR in all the closed shapes. Try to end up with a balanced variety, and no color touching itself.



Mondrian Collage

Elements of Art: Shape, Color

Piet Mondrian was a Dutch abstract artist, famous for his contribution to a movement that wanted to reduce art to pure form and color.



MATERIALS

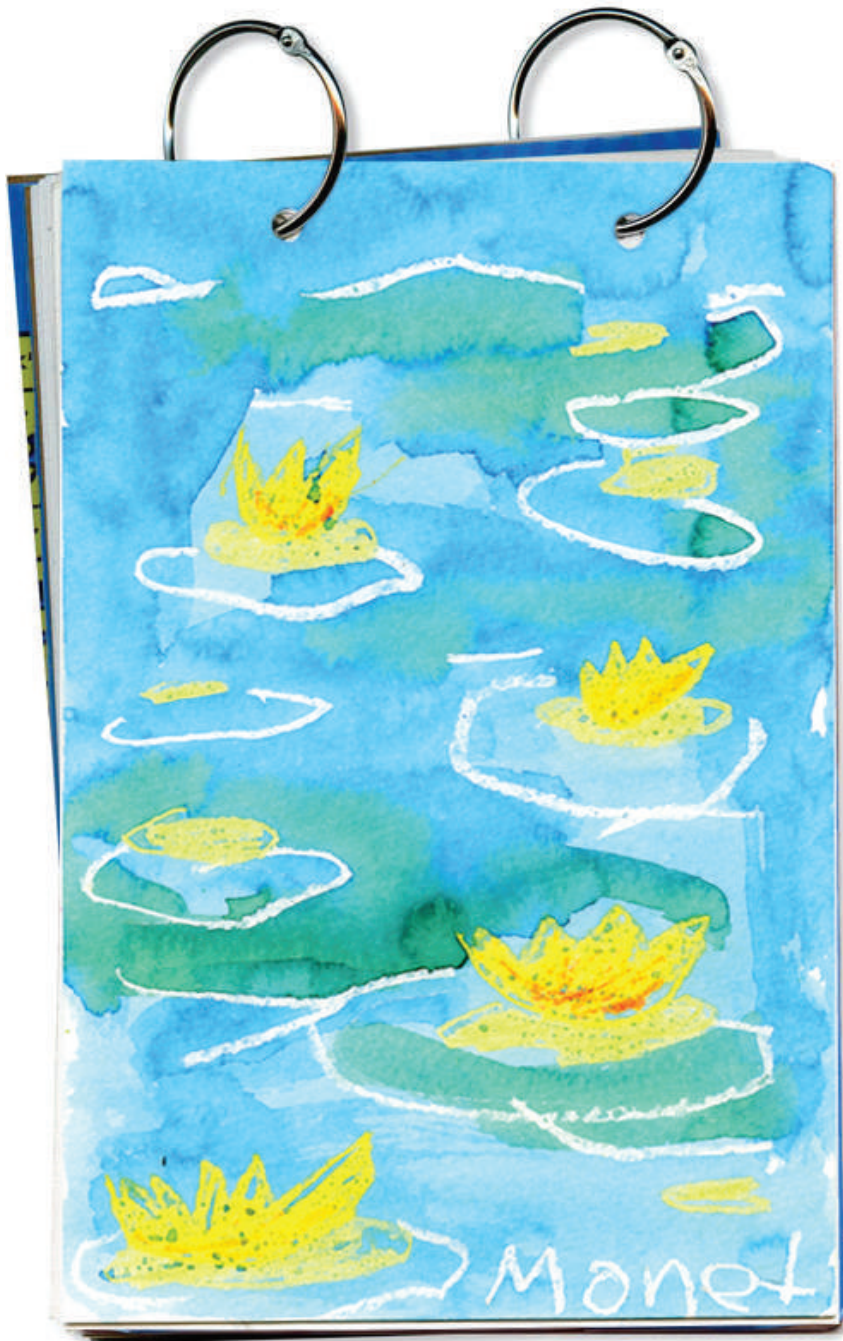
- Black card stock paper, 6" x 9"
- Card stock paper: red, blue, yellow, white
- Paper cutter
- Scissors
- Glue stick

DIRECTIONS

PREP: Cut lots of 2.5" width strips of red, yellow, blue and white paper.

1. Students cut apart the strips to make an assortment of rectangles and square SHAPES that fit together on the black paper. They must leave a bit of black space around each so that a black grid is created.

2. After a balanced COLOR arrangement is created, the shapes are attached with a glue stick.



Monet's Water Lilies

Elements of Art: Shape, Color

Claude Monet (1840-1926) painted his water lily pond directly from nature to show that even on the gloomiest of days, what a vast number of colors exist.

DIRECTIONS



1. Yellow flowers are randomly drawn and colored heavily with pastels. Orange centers are added.



2. Lily pads are drawn as ovals around the flowers and in between.



3. The water is painted with the blue watercolor, and green areas are added randomly afterwards. Let the colors run together for a watery effect.

MATERIALS

- Watercolor paper, 6" x 9"
- Oil pastels
- Liquid watercolor paint



Rothko Colors

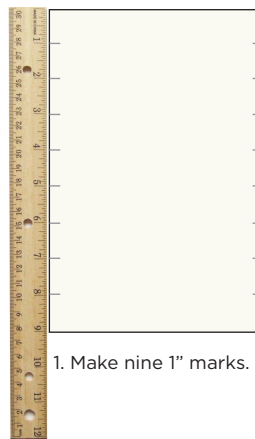
Elements of Art: Color

Mark Rothko, the American Expressionist and Surrealist painter is famous for his color block paintings. It's easy to try out his look if you start with soft oil pastels.

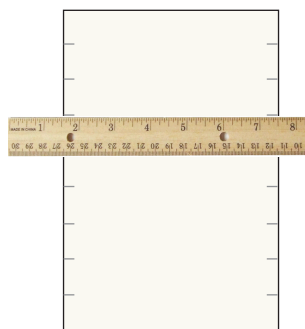
MATERIALS

- Multimedia paper, 6" x 9"
- Ruler
- Oil pastels (I recommend the Portfolio brand)

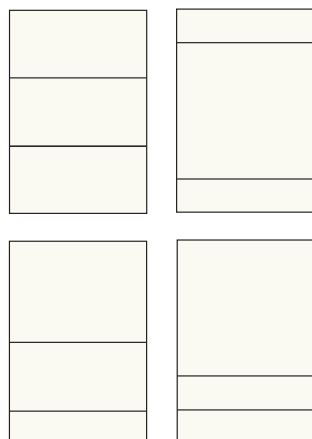
DIRECTIONS



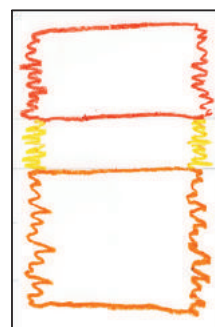
1. Make nine 1" marks.



2. Make 2 horizontal lines, wherever you want.



Here are four possibilities.



3. Make wiggly lines around the edges.



4. Fill with lots of COLOR. B.



Frank Stella

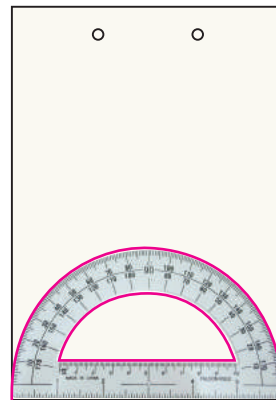
Elements of Art: Shape, Color

Frank Stella (born 1936), American painter, has been one of the most influential figures in abstract painting. During the 1960s he created a group of paintings known as the "Protractor Series."

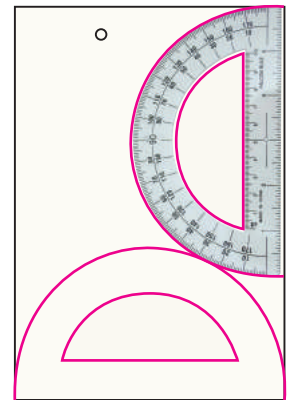
MATERIALS

- Drawing paper or fingerpaint paper, 6" x 9"
- Protractor
- Sharpie markers, black and assorted colors

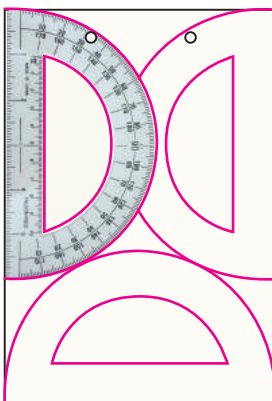
DIRECTIONS



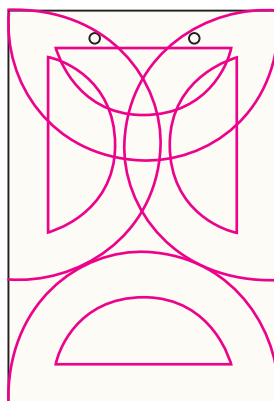
1. For the brightest colors, draw on fingerpainting paper.



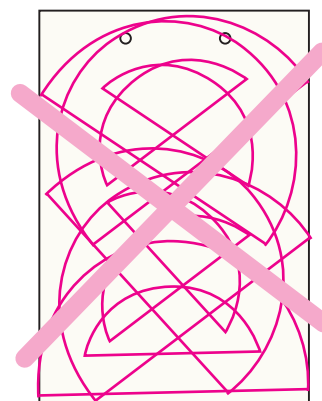
2. Move and trace the protractor SHAPE as you wish.



3. Matching the left and right will create symmetry.



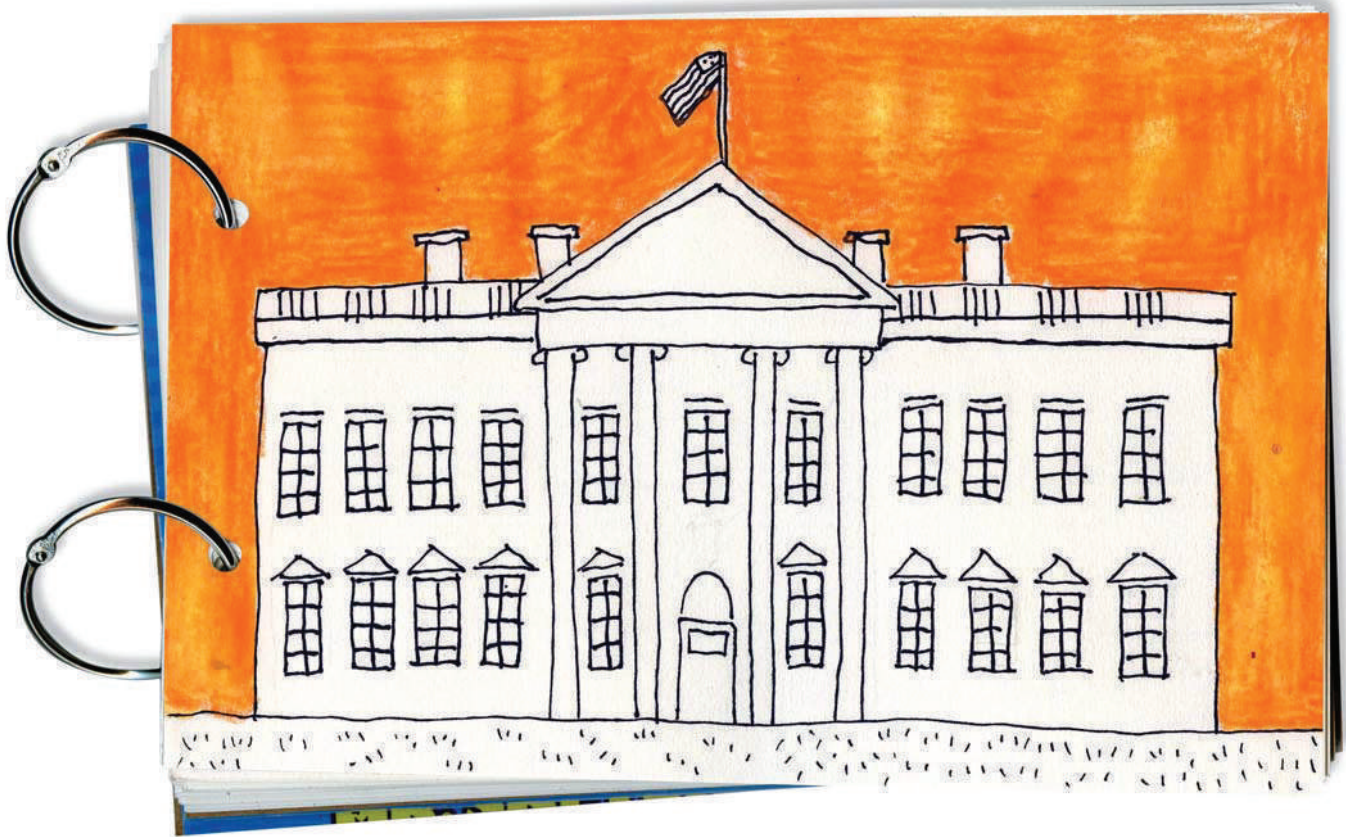
4. Trace protractor 3 - 5 times.



Keep it simple, too many tracings will get confusing!



5. COLOR with Sharpie markers, match left and right colors.



The White House

Elements of Art: Line, Color

The White House is the official residence and principal workplace of the President of the United States, located at 1600 Pennsylvania Avenue in Washington, D.C. It has been the residence of every U.S. president since John Adams in 1800.

This tutorial is good practice for students interested in drawing architecture. It has all of the main details found in the White House, but is simplified enough not to be overwhelming.

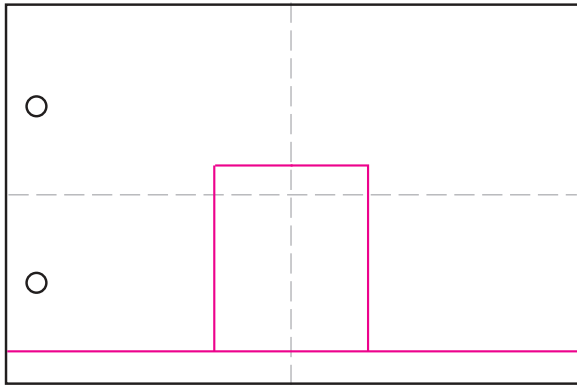
MATERIALS

- Multimedia paper, 6" x 9"
- Ultra fine Sharpie marker, black
- Watercolor paint

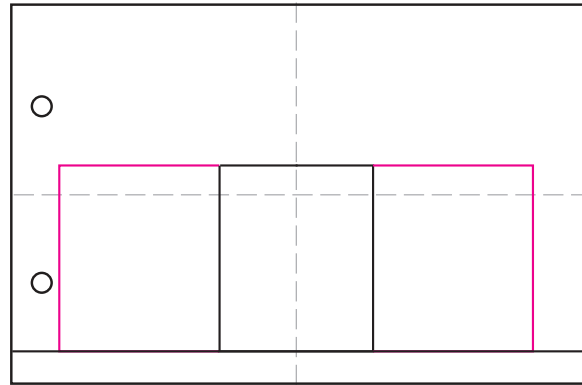
DIRECTIONS:

1. Draw the White House in pencil (see tutorial on following page).
2. Trace the drawing LINES with a thin black permanent marker.
3. Add COLOR only to the background.

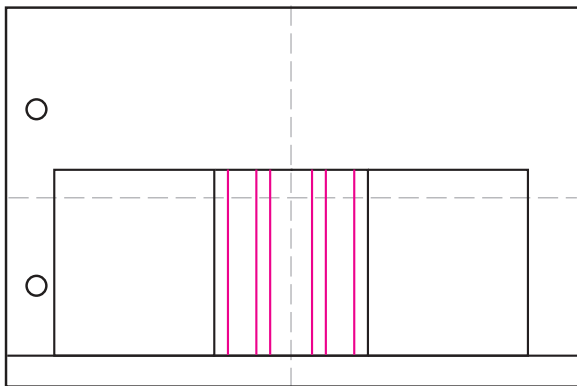
RECYCLED ART JOURNAL



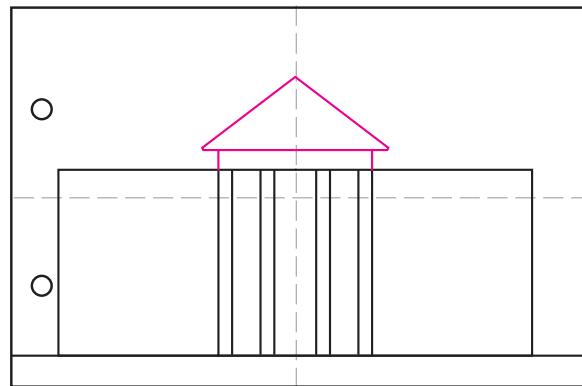
WHITE HOUSE TUTORIAL. Make fold lines. Draw ground and box.



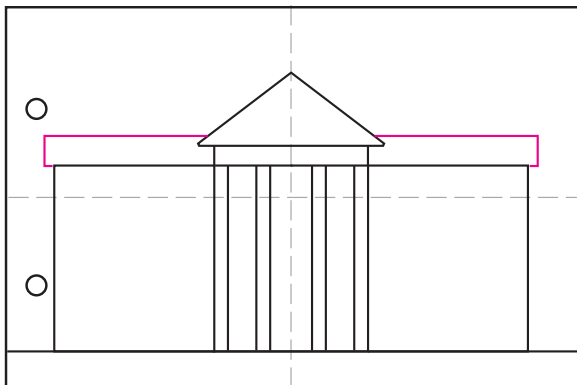
2. Draw an attached box on the left and the right



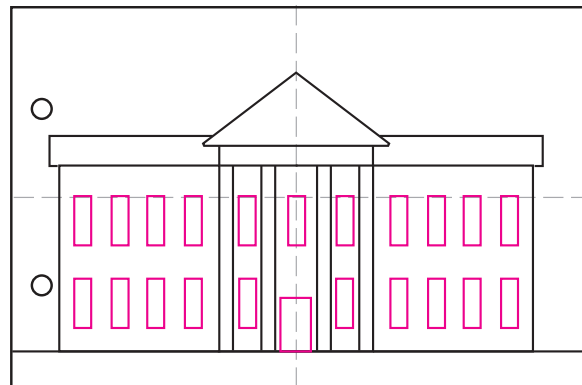
3. Draw the center column lines.



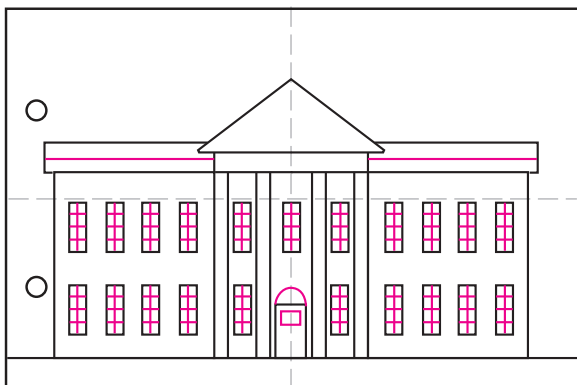
4. Add the panel and triangle in the center.



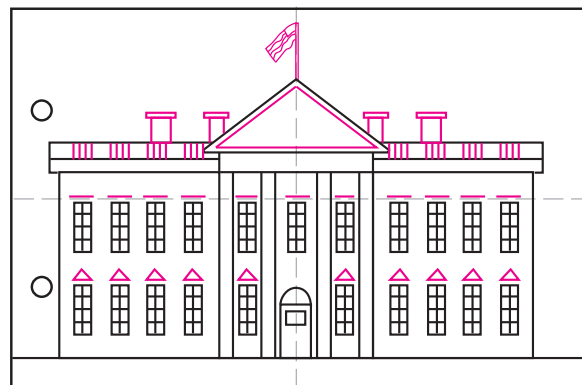
5. Draw the horizontal panels on left and right.



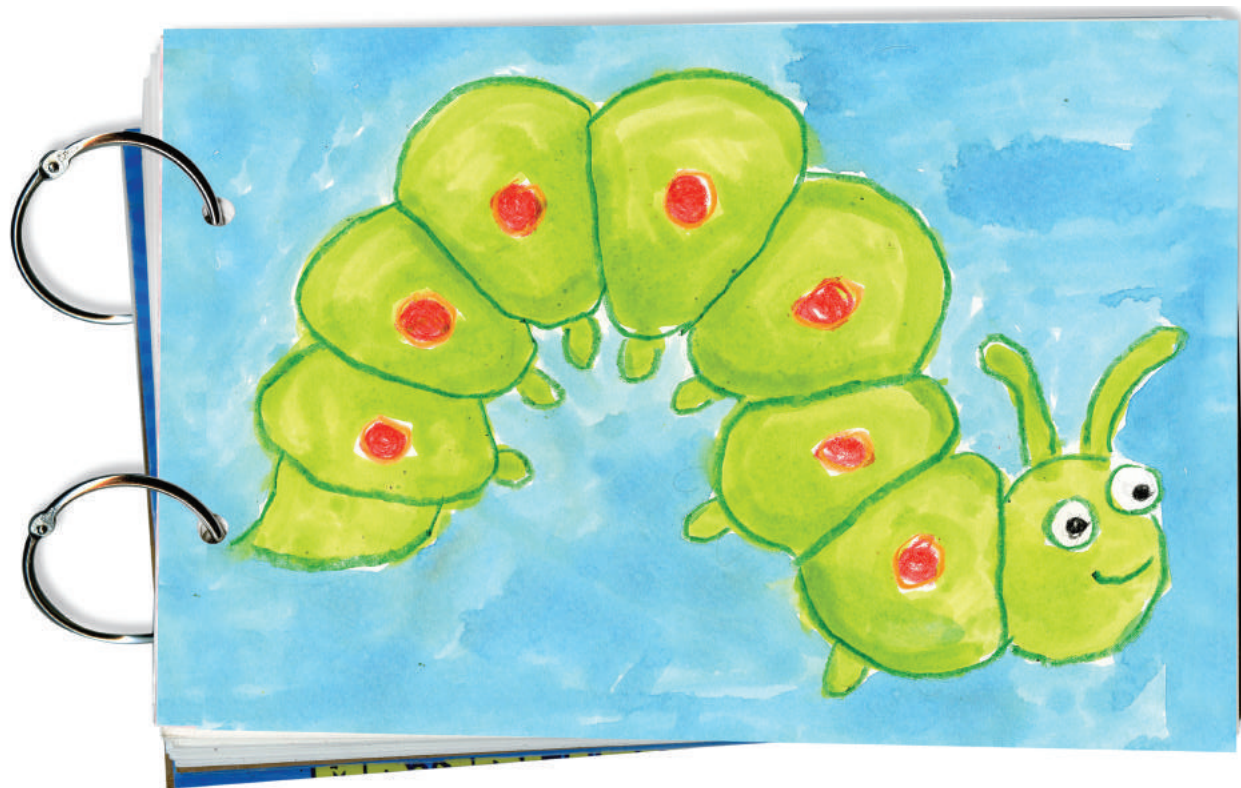
6. Draw the windows and door as shown.



7. Add window panes and roof lines.



8. Draw window and roof details, chimneys and flag.



Squishy Caterpillar

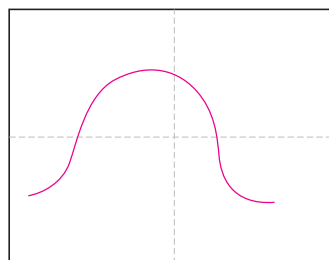
Elements of Art: Line, Color, Form

MATERIALS

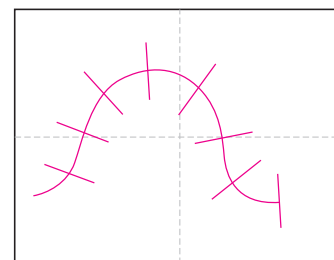
- Watercolor paper, 6" x 9"
- Crayons
- Watercolor paints, liquid type recommended

DIRECTIONS

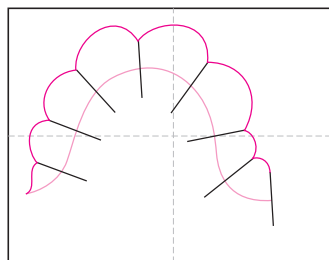
1. Follow the tutorial to draw the caterpillar with LINES. Erase the center line before tracing.
2. Trace the caterpillar with a crayon. COLOR in the spots on the side with another crayon.
3. Fill the caterpillar with watercolor paint. For extra dimension, or FORM, add extra layers of paint to make a shadow around the edge of the caterpillar.



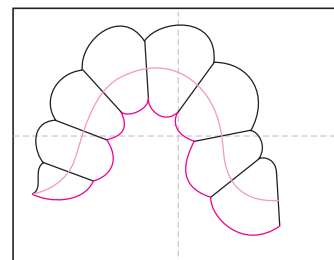
1. Draw the center spine.



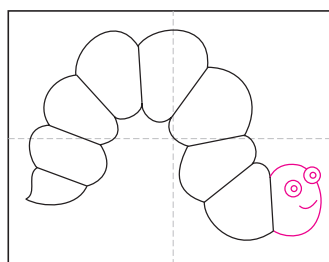
2. Draw eight lines as shown.



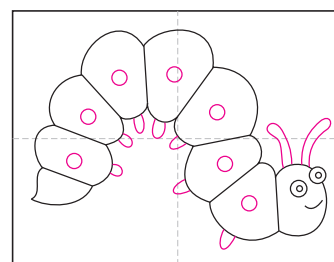
3. Connect the top ends



4. Connect the bottom ends.



5. Add head and face.



6. Add feet, spots and antennae.



Cut & Tear City Buildings

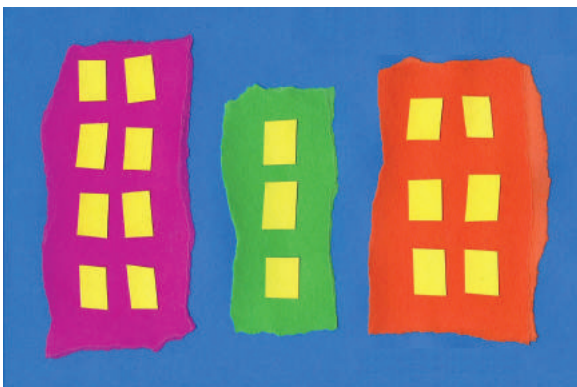
Elements of Art: Line, Shape

MATERIALS

- Card stock paper, 6" x 9" sheet
- Card stock paper, assorted colors
- Scissors and glue stick
- Black Sharpie marker



1. Tear three rectangles from construction paper.



2. Cut matching window size and SHAPES from yellow paper. Glue windows in rows and columns.



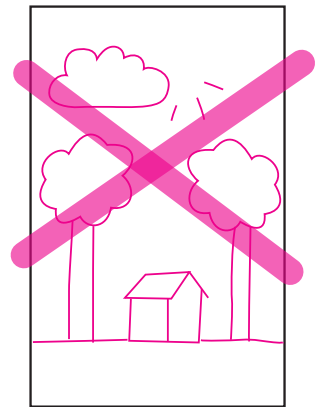
3. Draw city details, LINES only, with a black marker.



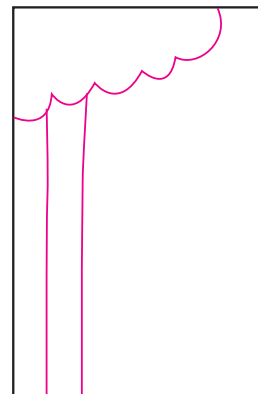
Layered Landscape

Elements of Art: Shape, Color, Space

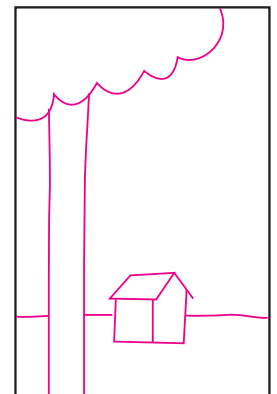
Adding layers to your art will make it have more depth. Follow the instructions below to make a simple landscape drawing that appears to have lots of space in it.



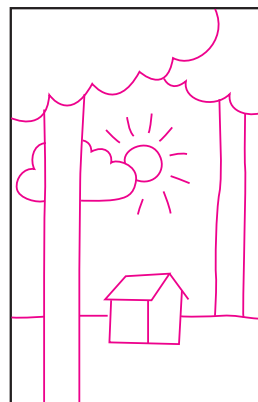
Drawing with no layers, ho hum!



1. Draw a tree in foreground.



2. Add house in middle ground.



3. Draw tree in background. All three layers together will help create SPACE.



4. COLOR all the shapes. Trace edges with black pastel last to create crisp lines.

MATERIALS

- Drawing paper, 6" x 9"
- Oil pastels



Geometric to Organic

Elements of Art: Shapes

This is a really fun way to teach students the difference between geometric and organic shapes. You literally “blow” one shape into the other, and then trace for emphasis.

DIRECTIONS



1. Students cut out geometric SHAPES. Some are arranged on the watercolor paper and traced. Be sure to leave white space. The shapes are colored in with the markers.



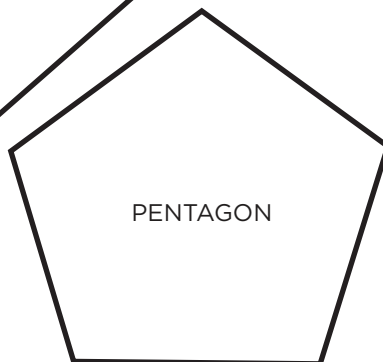
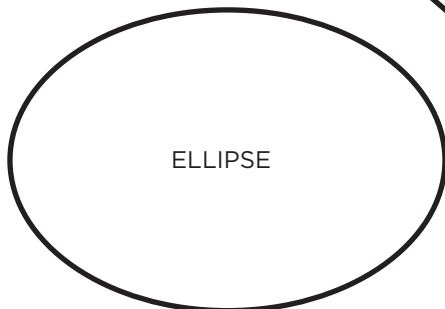
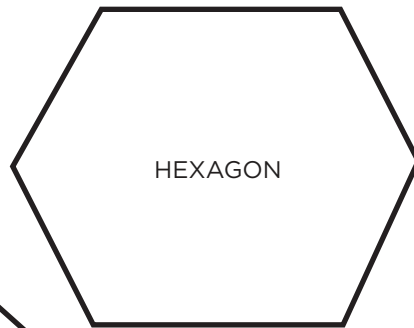
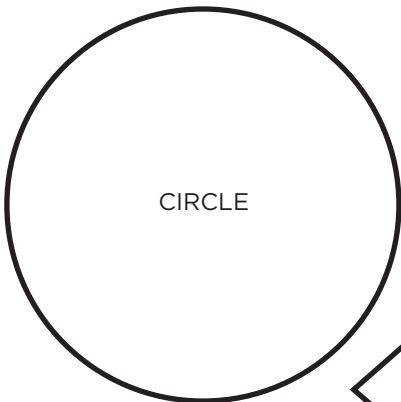
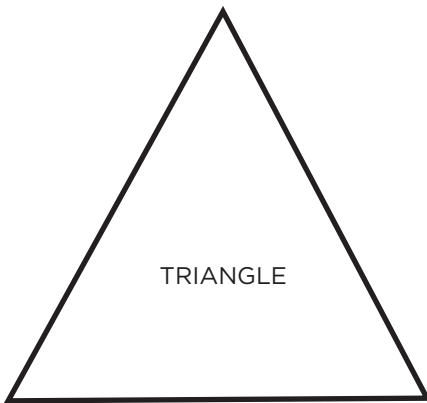
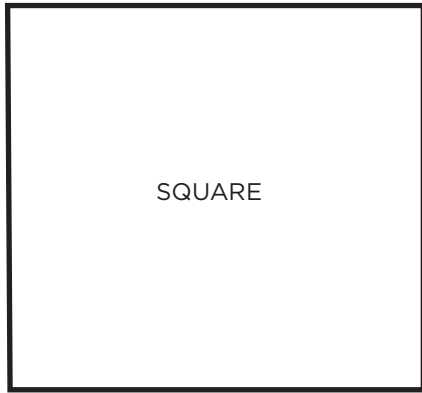
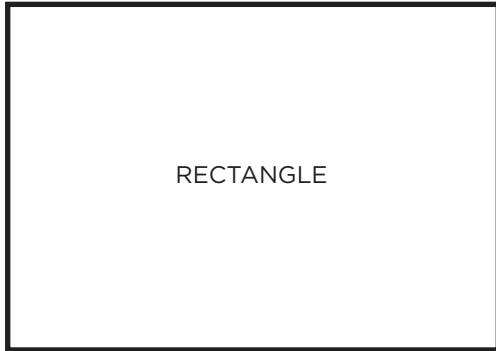
2. A straw is used to drop some water spots on the colored shapes. After sitting for a moment, the drops are blown with a straw, in an attempt to make them run off the page. Continue until there are ORGANIC lines running off all the sides of the paper. Dab dry with a paper towel.

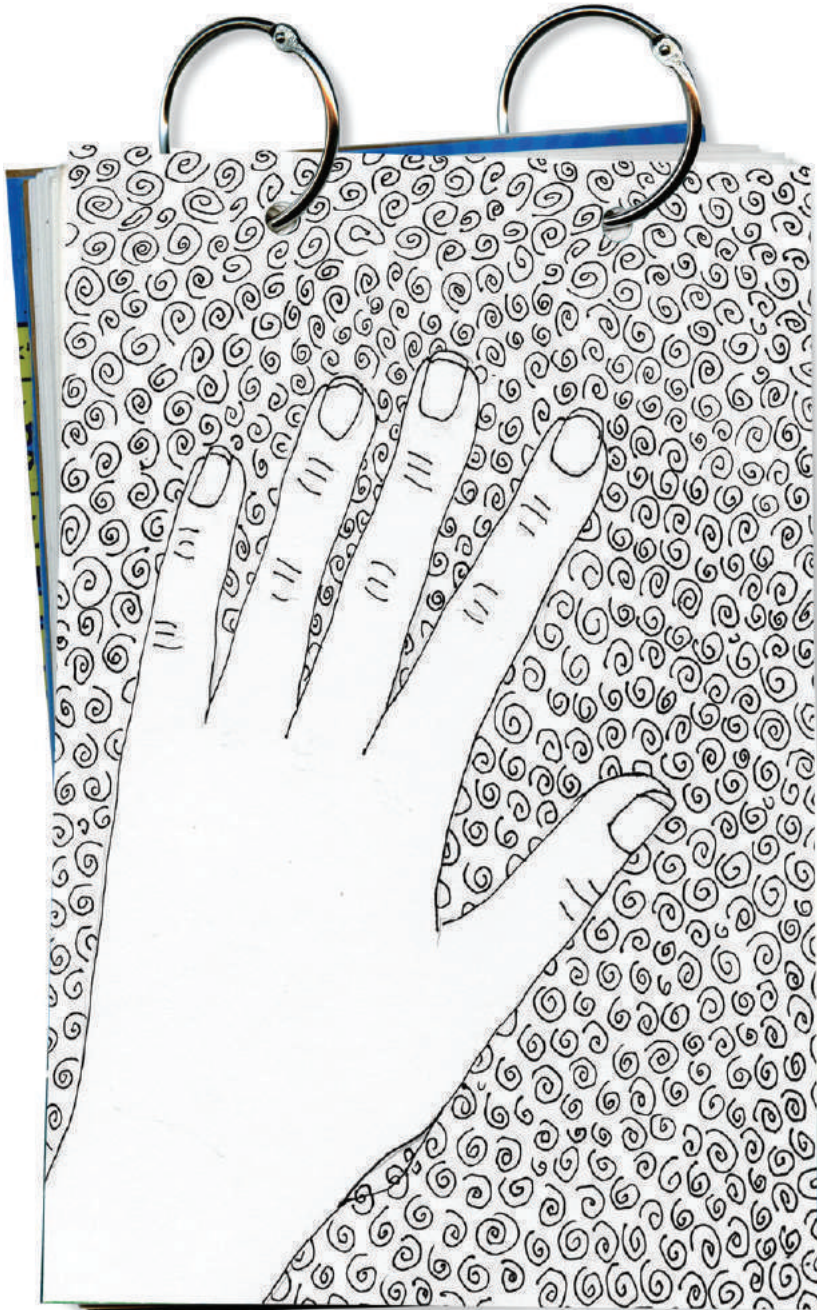


3. All of the edges are traced with a thin black marker. Take care to go over every bumpy line, including inside and outside the GEOMETRIC shapes.

MATERIALS

- Watercolor paper, 6" x 9"
- Sheet of geometric shapes to cut (see next page)
- Scissors
- Markers, assorted colors, water base only
- Cup of water and straw
- Black marker, ultra fine tip





Contour Line Drawing

Elements of Art: Line, Shape

To make a contour drawing, the artist only draws the lines that follow the edges of a shape. No shadows or dimensions allowed.

Try tracing your own hand, adding details, and then filling in the background for a lovely work of art.

MATERIALS

- Drawing paper, 6" x 9"
- Black Sharpie marker, ultra fine tip

DIRECTIONS

1. Trace your hand SHAPE on the paper.
2. Draw the details you see inside: fingernails, wrinkles.
3. Trace the drawing with a thin black marker.
4. Fill in the background with some kind of LINE patterns. Repeat until the entire background is filled. Erase any left over pencil lines.



Terrarium Painting

Elements of Art: Line, Shape

Here's a project I've used it for years with kinders, when they study root systems in the spring. The jar makes a nice frame for the artwork, and the root technique is a nice introduction to what I call, the "white crayon trick".

DIRECTIONS



1. Trace the terrarium SHAPE onto the watercolor paper. The jar and lid and flowers are traced with a crayon. The flowers colored in with crayons.

The root LINES are drawn below the flowers, with a white crayon, pressing very hard. Drawing the roots only in crayon, without any pencil lines first, really helps to keep them nice and white.



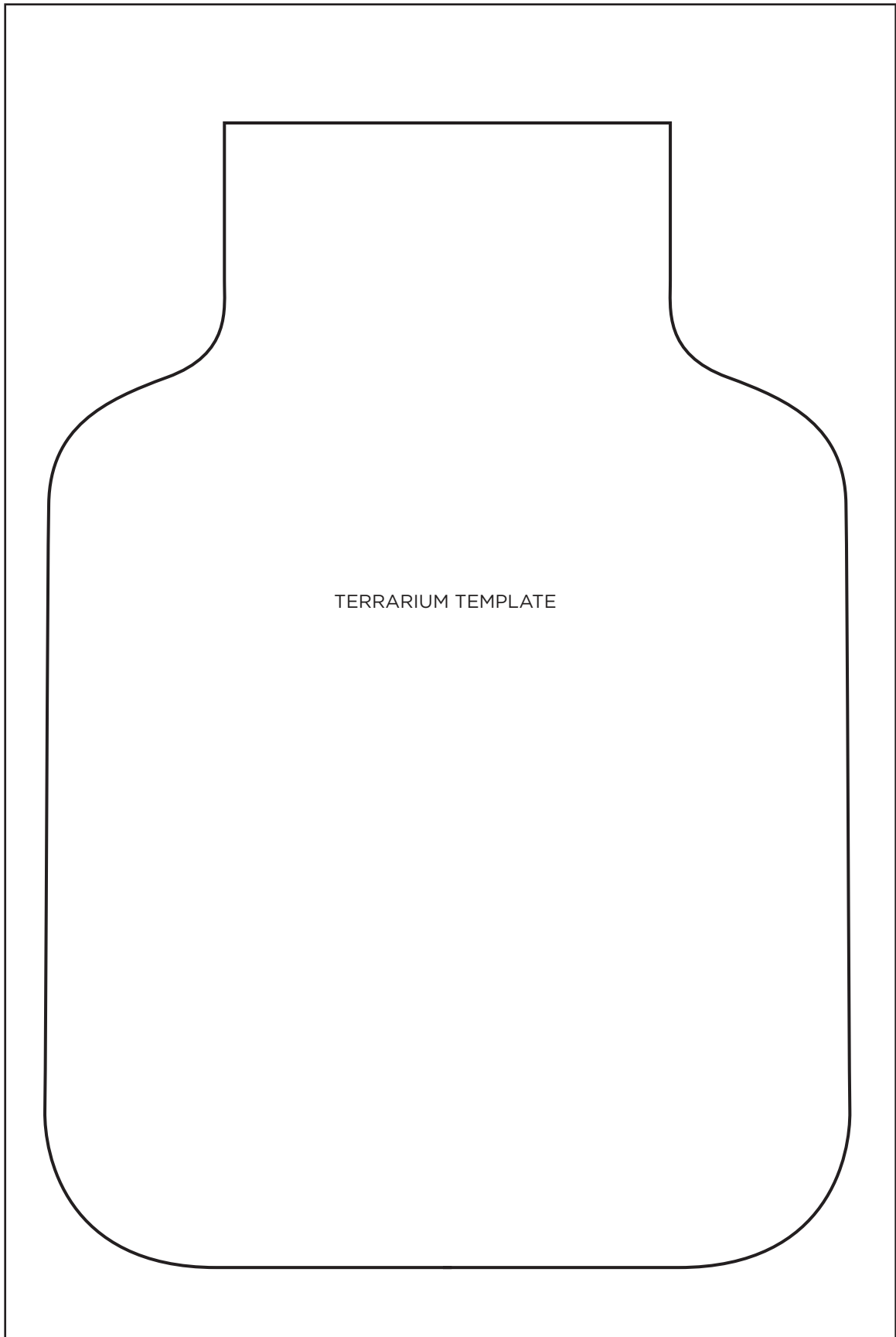
2. The ground is painted with brown watercolor paint, which makes the roots will magically appear.



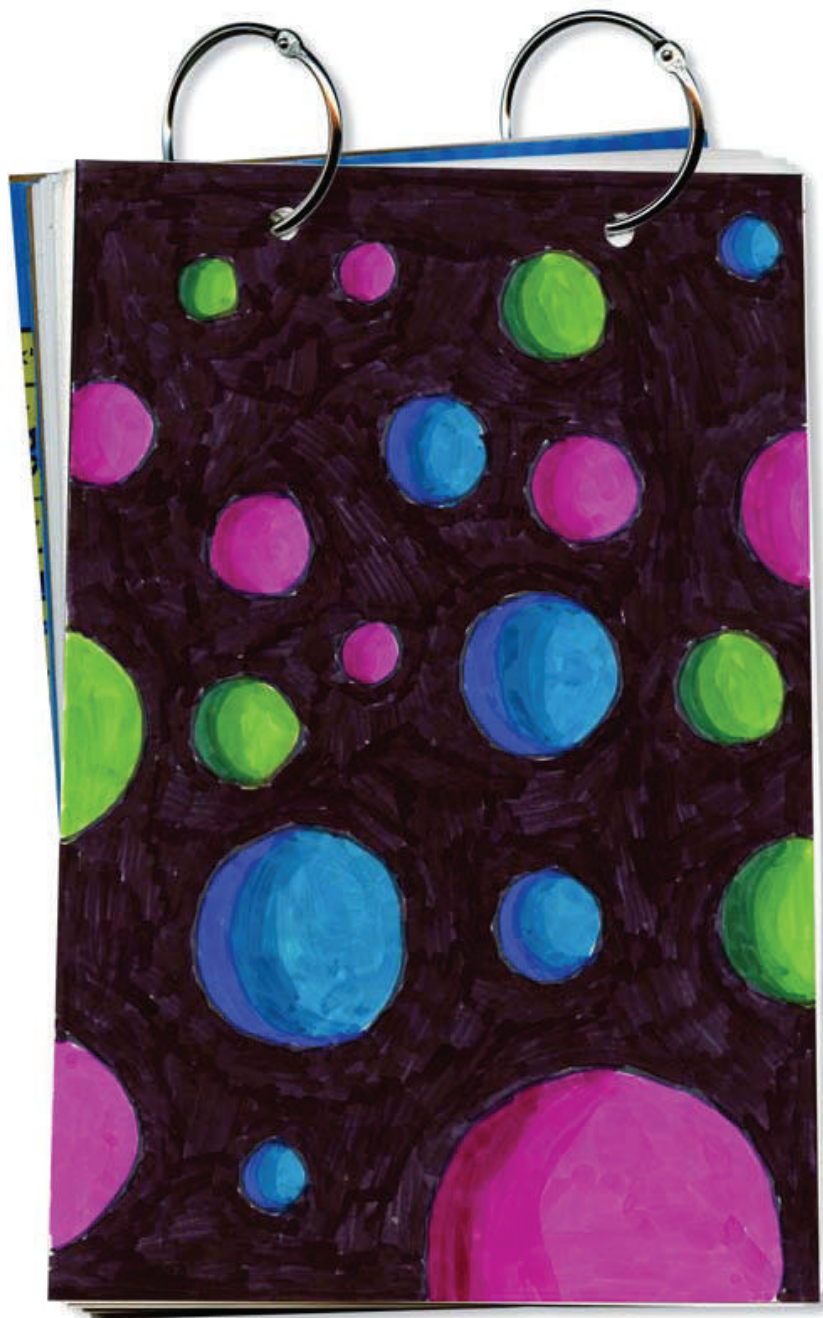
3. The area around the flowers is painted, as is the background and lid. The crayon lines around the jar will help keep the colors separate, if care is taken to not let any puddles happen.

MATERIALS

- Watercolor paper, 6" x 9"
- Terrarium template, page 29
- Crayons
- Liquid watercolor paint



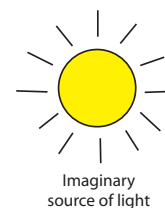
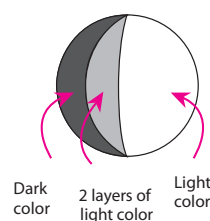
TERRARIUM TEMPLATE



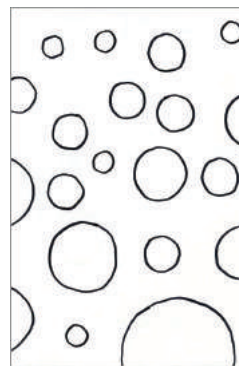
Marbles in Space

Elements of Art: Color, Shape, Value

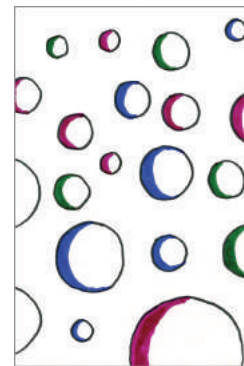
Follow the diagrams for shading a circle into a sphere. You can use crayons, pastels or paint. To get the the bright colors shown on my sample drawing, use Sharpie markers on fingerprint paper.



DIRECTIONS



1. Use a template to trace many circles.



2. Draw "moon" SHAPES with the dark marker, all on the same side.



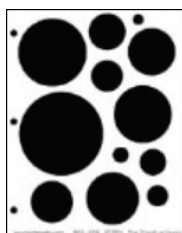
3. Fill in the rest of the circle with a light marker.



4. COLOR the middle with a second layer of the light marker. Blend to make a soft VALUE change of light to dark.

MATERIALS

- Drawing paper or fingerprint paper, 6" x 9"
- Circle template (see lauriespeltz.com)
- Sharpie markers, 12 pack brush type which has markers in two tones: blue/light blue, green/light green, pink/magenta





Country Barn

Elements of Art: Shape, Color

Farmers in the United States have traditionally painted their barns red. Red barns have become the most recognizable symbol of American farm life.

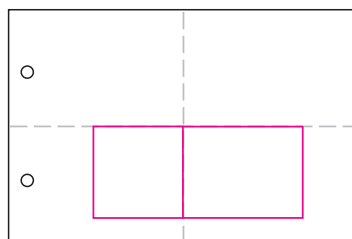
MATERIALS

- Drawing paper, 6" x 9"
- Black Sharpie marker
- Pencil crayons

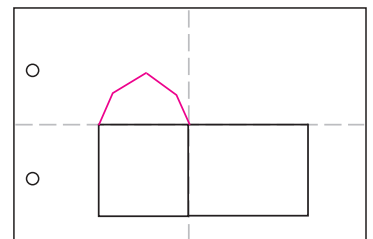
DIRECTIONS

1. Follow the steps below to draw the barn SHAPES.
2. Trace the lines with a black marker.
3. COLOR the barn with crayons or colored pencils.

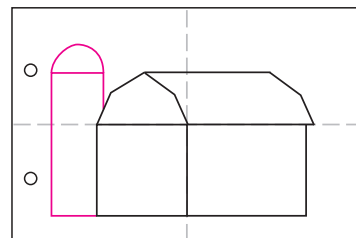
DIRECTIONS



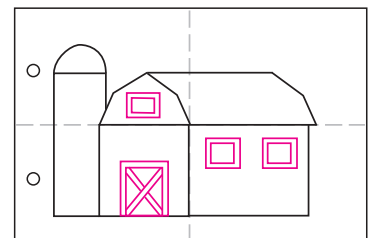
1. Draw two rectangle SHAPES.



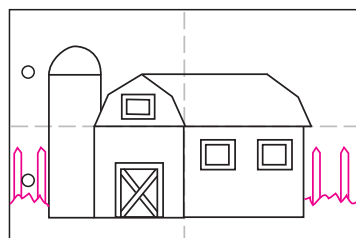
2. Draw a symmetrical roof angle.



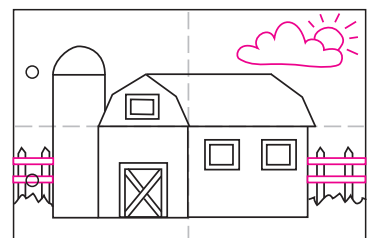
3. Draw a silo to the left.



4. Add the door and windows.



5. Add the grass, draw fence poles.



6. Finish the fence and add sun, cloud.



La Boca Houses

Elements of Art: Line, Shape, Texture

La Boca is a neighborhood, or barrio of the Argentine capital, Buenos Aires. It is a popular tourist destination because of its very colorful homes. Years ago, shipyard workers used left over metal and paint to create homes. There was never quite enough for an entire house, hence the amazing patchwork neighborhoods.

MATERIALS

- Drawing paper, 6" x 9"
- Card stock paper in assorted colors
- Fiskars Paper Crimper
- Scissors
- Black Sharpie marker
- Glue stick

DIRECTIONS

1. I discovered these Fiskar Paper Crimpers at JoAnn Fabrics, and bought several. Older students can try to roll the paper to make the TEXTURE themselves, and younger ones can watch a demonstration. I started by giving each student a white background paper, and then lots of crimped paper to experiment with.
2. Students cut large rectangles and matching roof SHAPES for their homes. The buildings are glued down, sitting side by side. Rotating the texture adds interest to the collage.
3. Additional rectangle SHAPES are cut to create windows and doors. Students use the markers to draw LINES for door and window details.

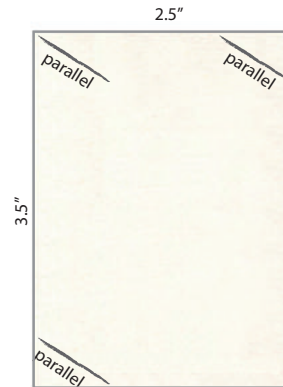


3D City Buildings

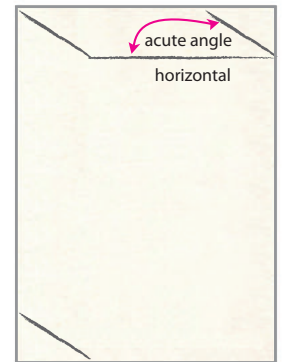
Elements of Art: Line, Shape, Color

Use the built in rectangle shape of trading cards to make a series of 3D block buildings.

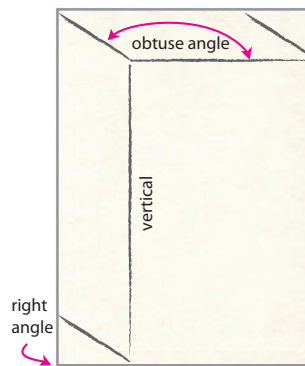
DIRECTIONS



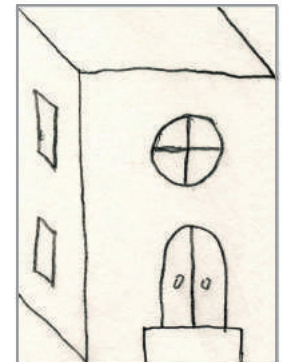
1. Draw three parallel LINES.



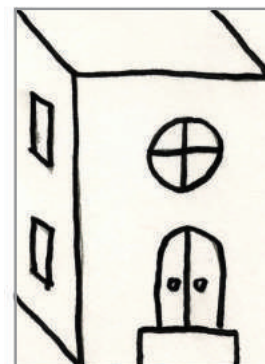
2. Draw horizontal line.



3. Draw vertical line.



1. Draw door and windows.



2. Trace with marker.



2. COLOR with markers, trim corners.

MATERIALS

- Drawing paper, 6" x 9"
- Drawing paper cut to ATC size, 2.5" x 3.5"
- Paper cutter, recommended to cut lots of cards
- Scissors
- Markers, assorted colors
- Glue stick

Still Life Painting

Elements of Art: Lines, Shapes, Value

A simple line drawing of a still life objects can make for an interesting color study.

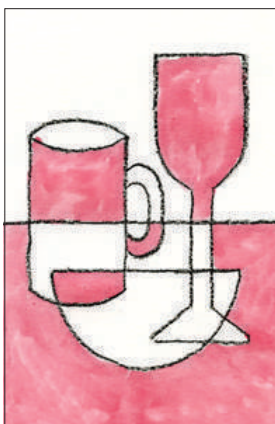
MATERIALS

- Multimedia or watercolor paper, 6" x 9"
- Still Life template shapes (see next page)
- Black crayon
- Watercolor paints

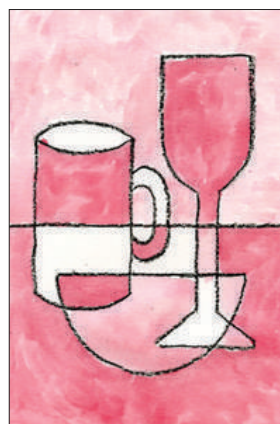
DIRECTIONS

PREP: Templates of the goblet, cup and bowl are available on the following page. Given more time and ability, students could make their own.

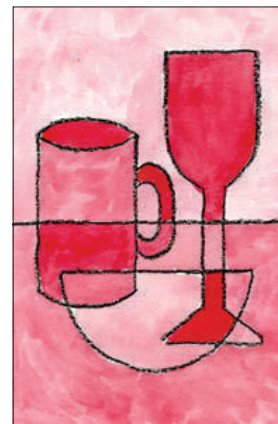
1. Students cut out the still life SHAPES, overlap them on the watercolor paper, and trace.
2. The LINE drawing is traced with a black crayon.
3. Students are to create at least three VALUES of paint, by adding water to a single color. They may work from dark to light, or visa versa, the goal is to have a variety with no two similar values touching each other.



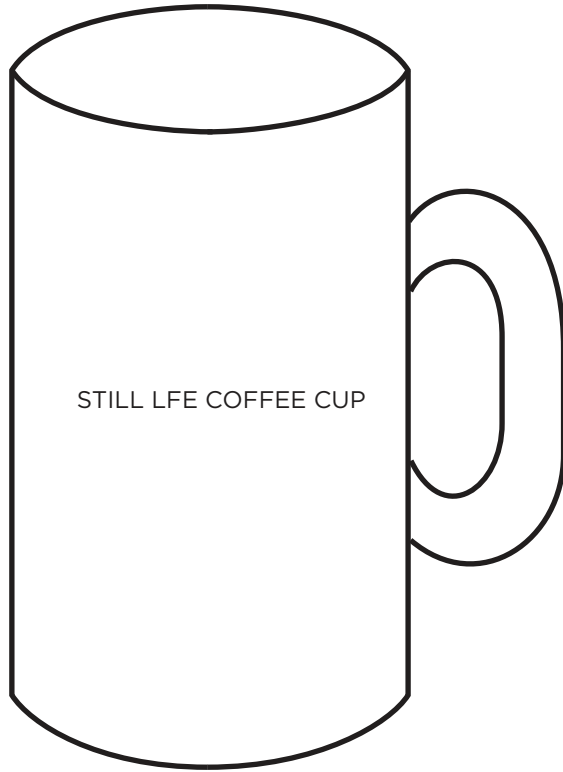
1. Areas filled with medium VALUE.



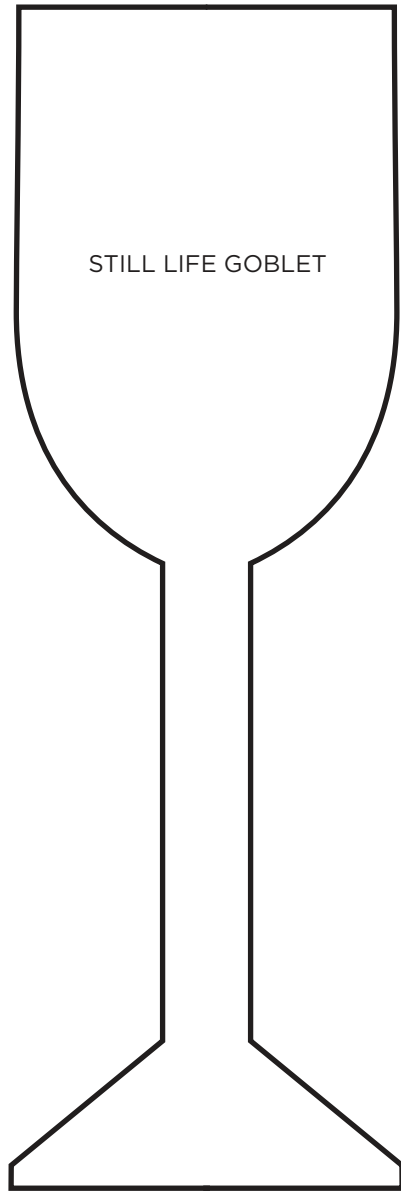
2. More filled with light VALUE.



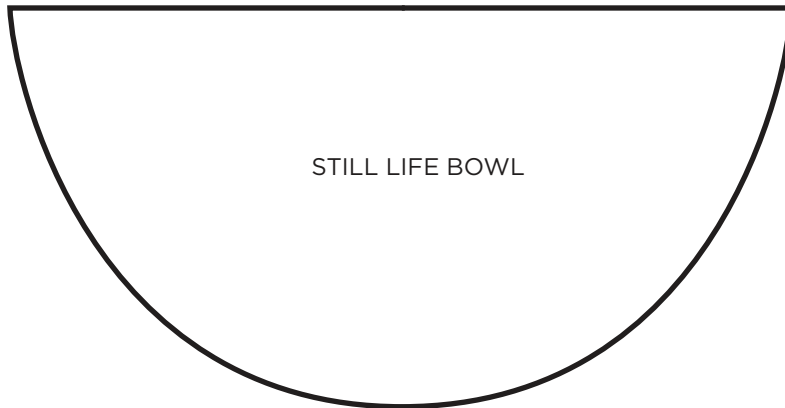
3. Remainder filled with dark VALUE.



STILL LIFE COFFEE CUP



STILL LIFE GOBLET



STILL LIFE BOWL



Bug Collage

Elements of Art: Lines, Shapes, Value

Mix some science into your art by making these bug collages. Learn to name the body parts while you are at it.



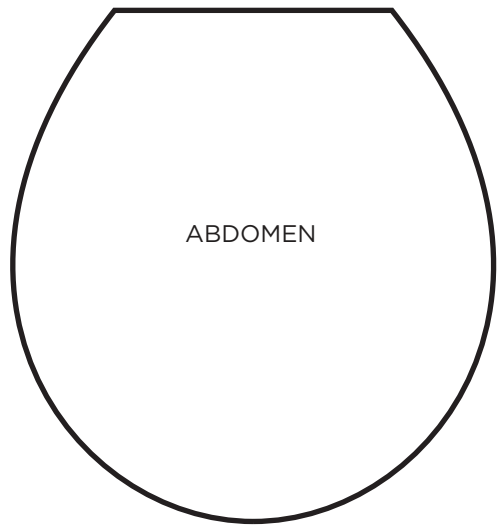
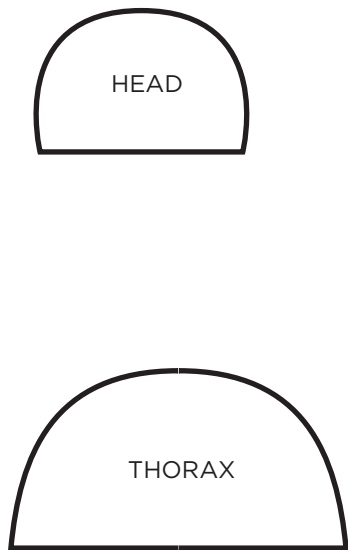
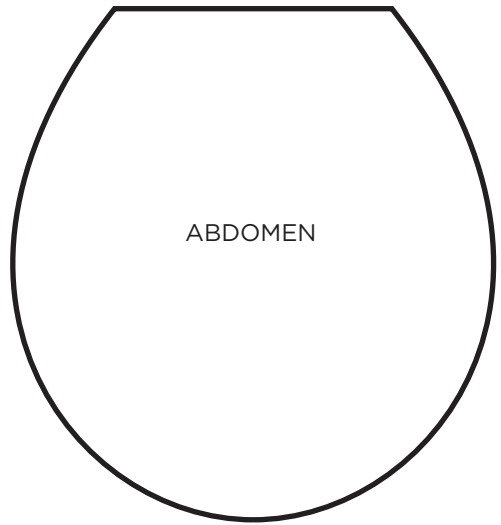
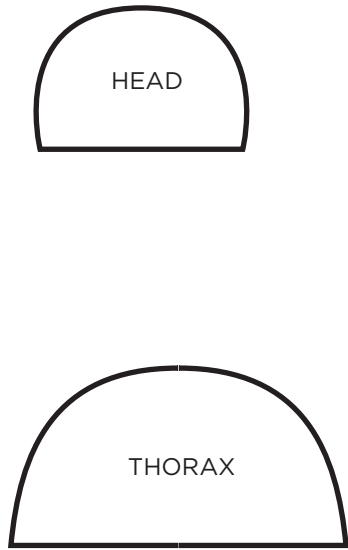
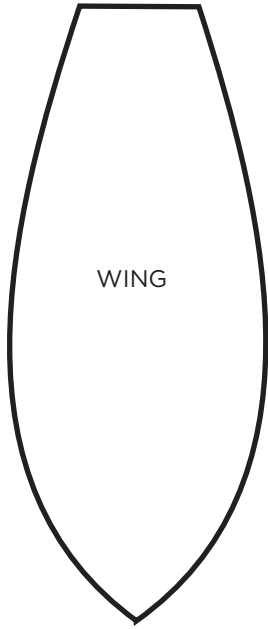
MATERIALS

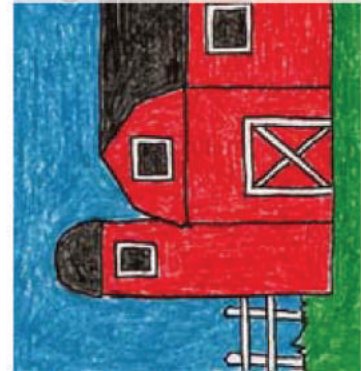
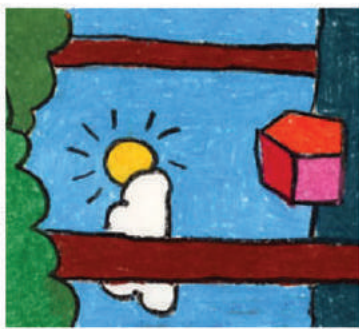
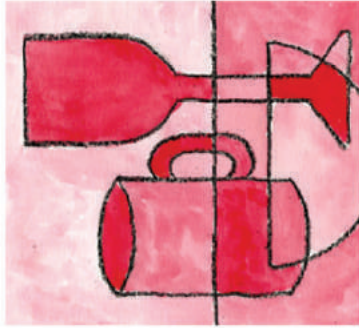
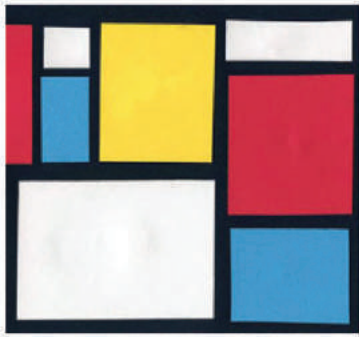
- Black card stock paper, 6" x 9"
- Bug template shapes (see next page)
- Scissors
- Glue stick
- Metallic markers

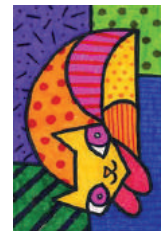
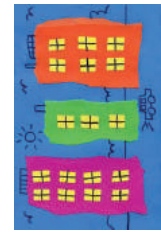
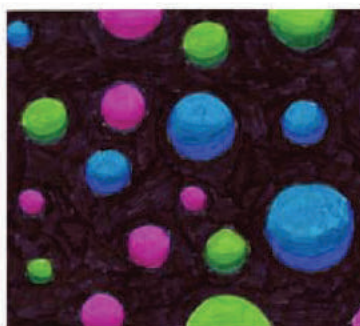
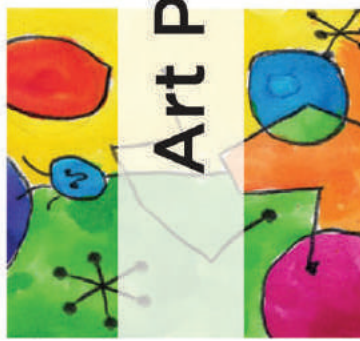
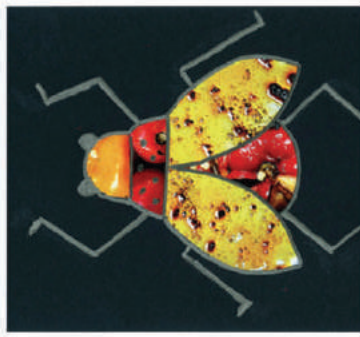
DIRECTIONS

PREP: Copy templates of the bug head, thorax, abdomen and wing are on the following page.

1. Cut out the bug templates.
2. Search old magazines for photos.
3. The template shapes are traced onto the magazine pages, cut and glued to a background page to create a new bug.
4. The bug body is traced with a metallic marker. Legs are added last, keeping them true to what they look like in real life.







The Recycled Art Journal