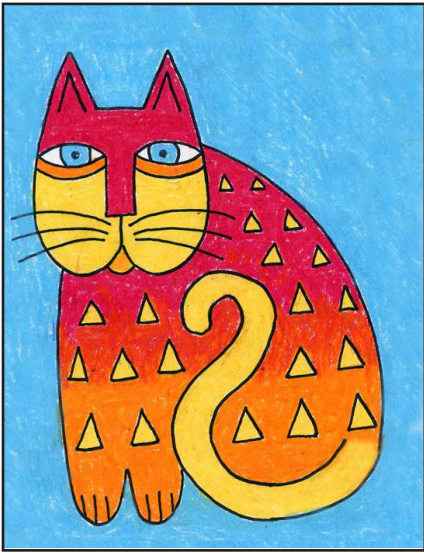
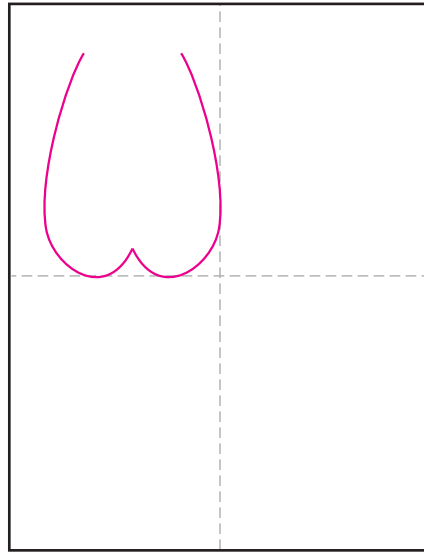


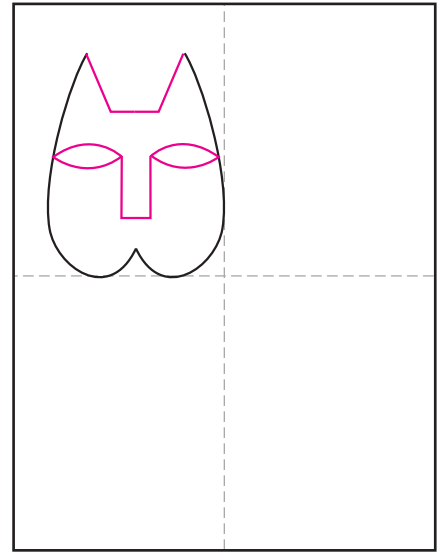
# Draw a Laurel Burch Style Cat



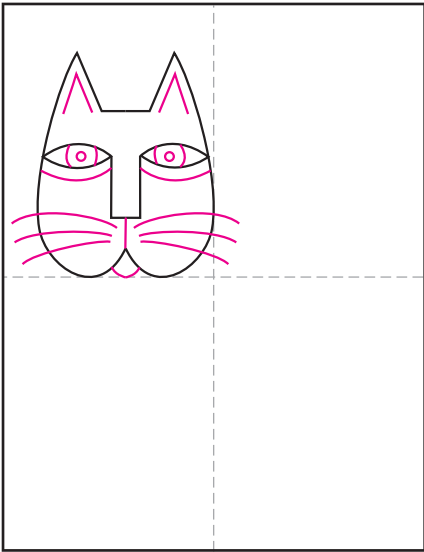
Supplies: Marker, oil pastels



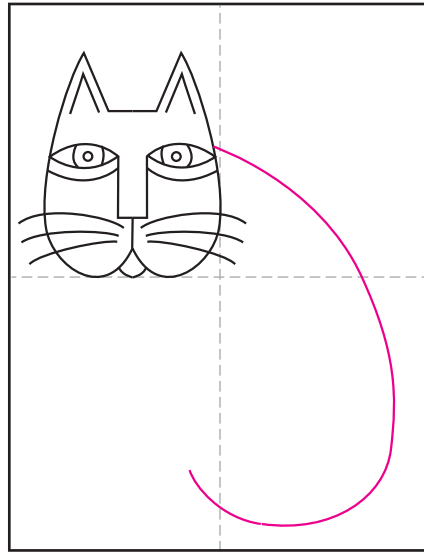
1. Make guide lines. Start the head.



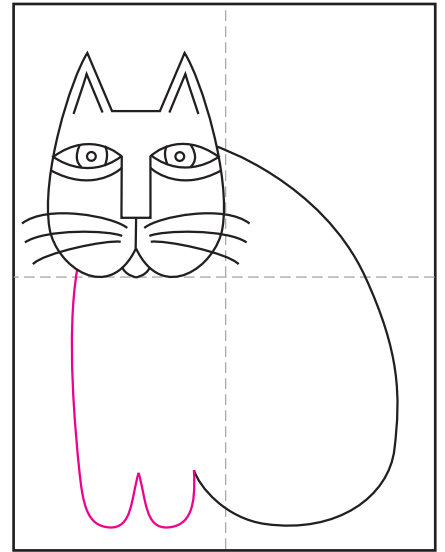
2. Add ears, eyes and nose.



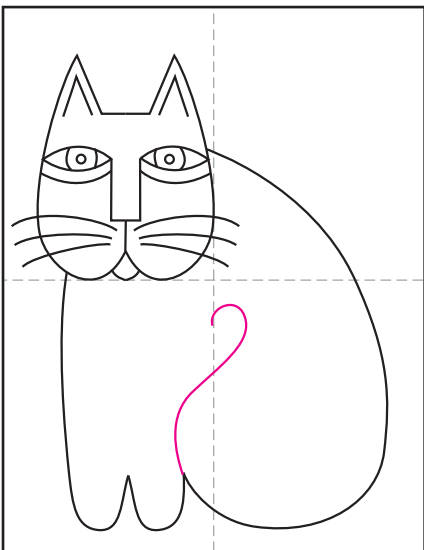
3. Add eyes, whiskers and details.



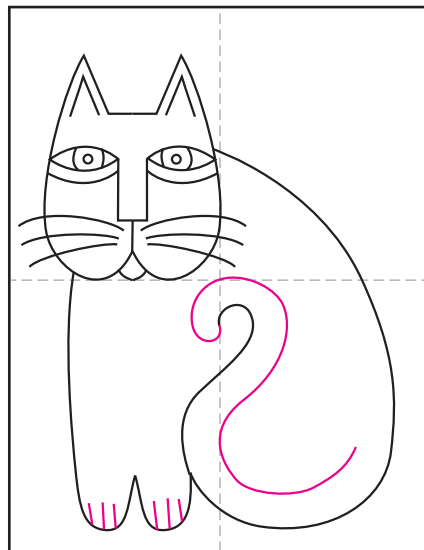
4. Start the back.



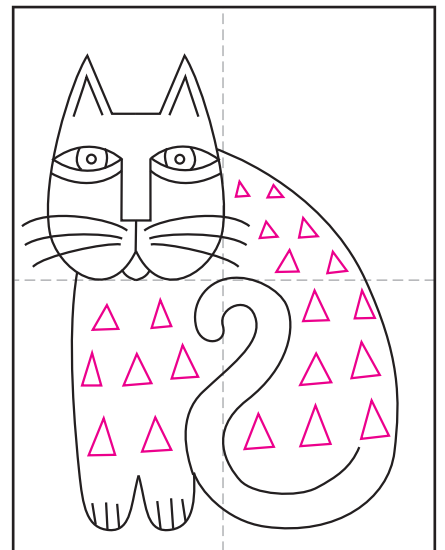
5. Add the front legs.



6. Start the inside of the tail.



7. Finish tail, add front claws.



8. Finish with your favorite pattern.