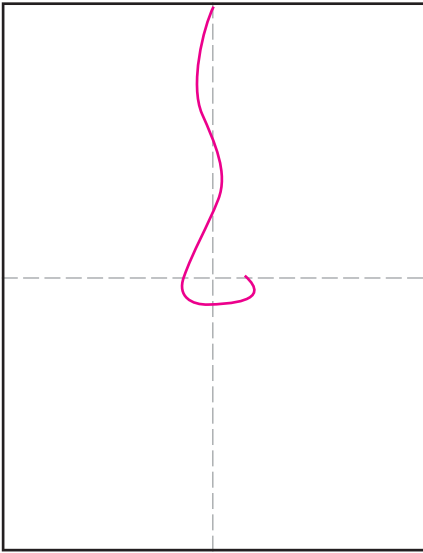
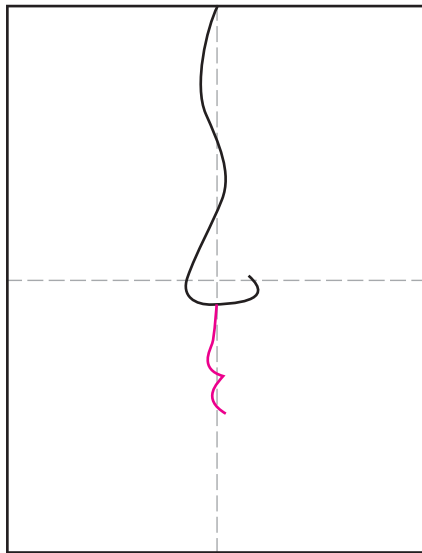


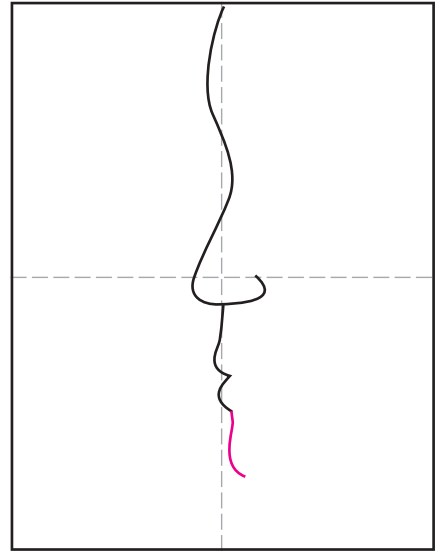
Draw a Cubism Portrait



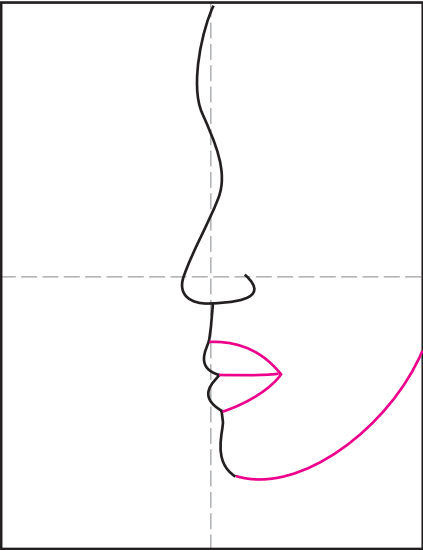
1. Make fold lines. Start top profile.



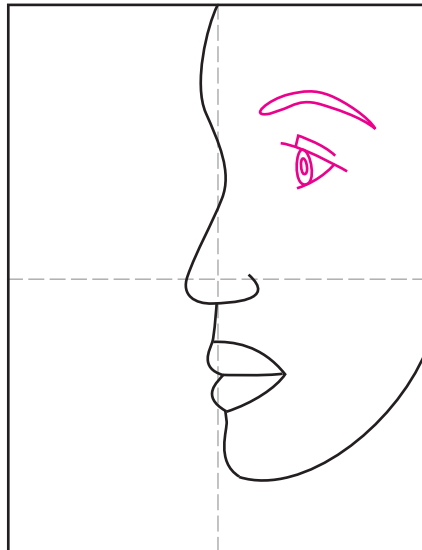
2. Continue down through lips.



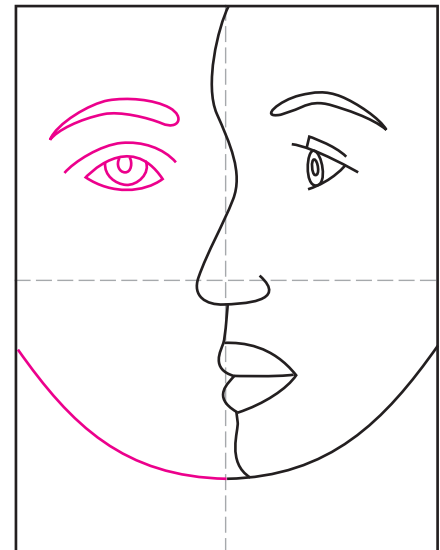
3. Draw chin.



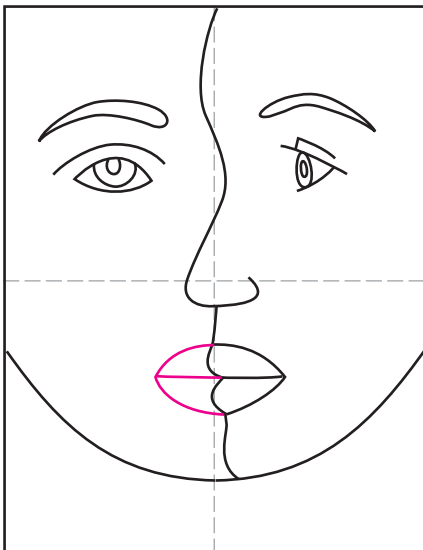
4. Continue chin line. Add lips.



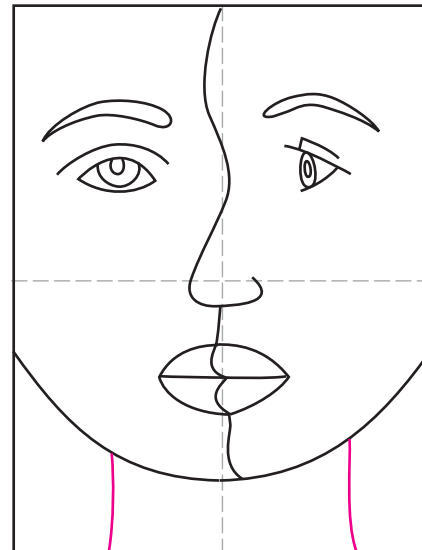
5. Add profile eye and brow.



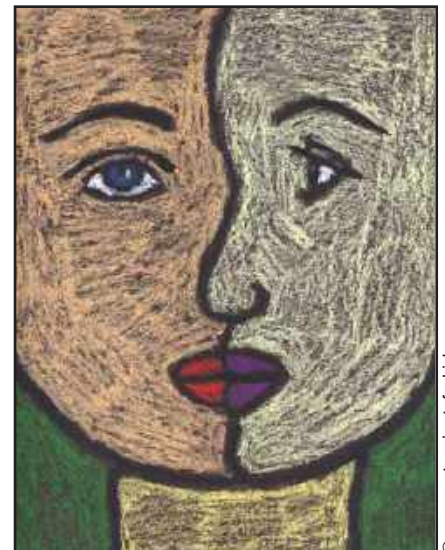
6. Draw left chin line and eye.



7. Add left mouth.



8. Complete with neck lines.



9. Trace heavily with black pastel, and fill in with lots of bright colors.