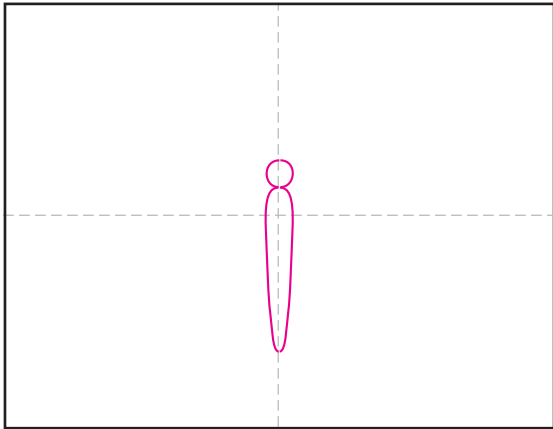
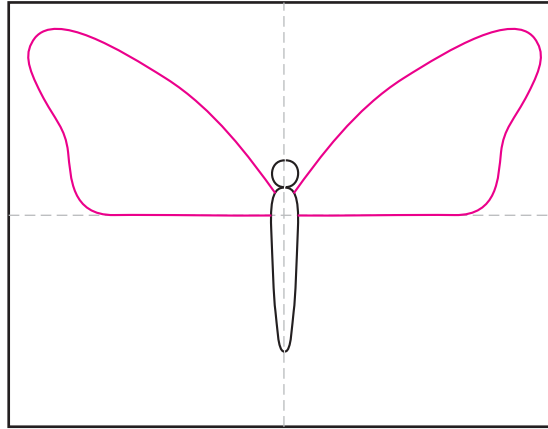


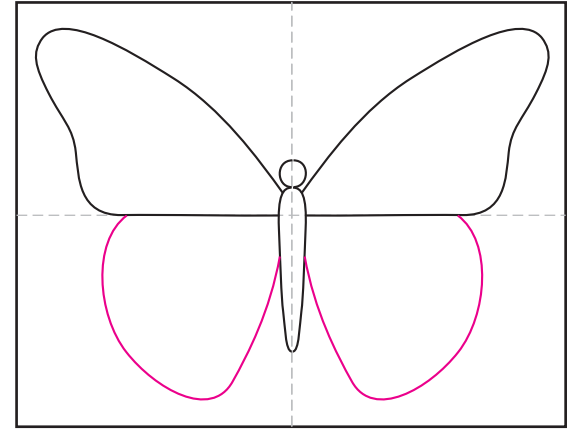
Draw a Butterfly



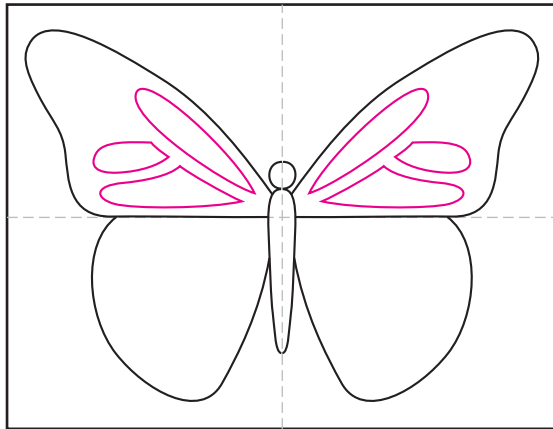
1. Draw the body and head on the center line.



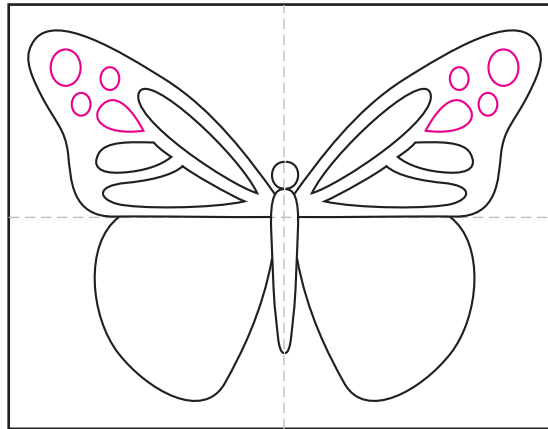
2. Add two symmetrical top wings.



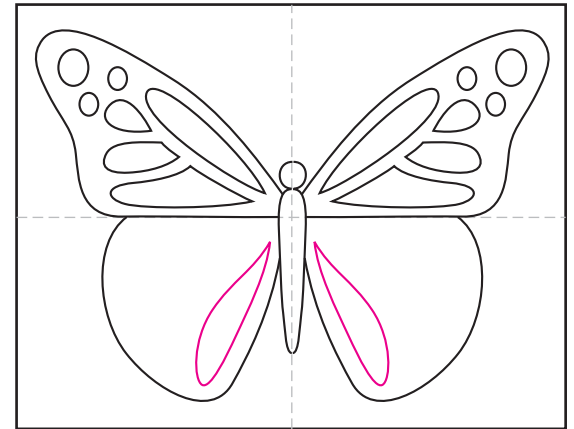
3. Add two symmetrical bottom wings.



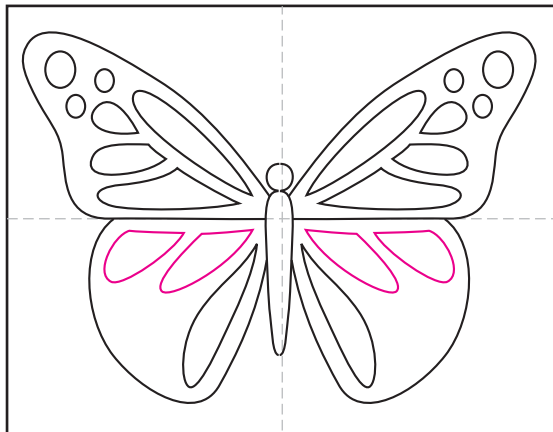
4. Start the symmetrical shapes on top.



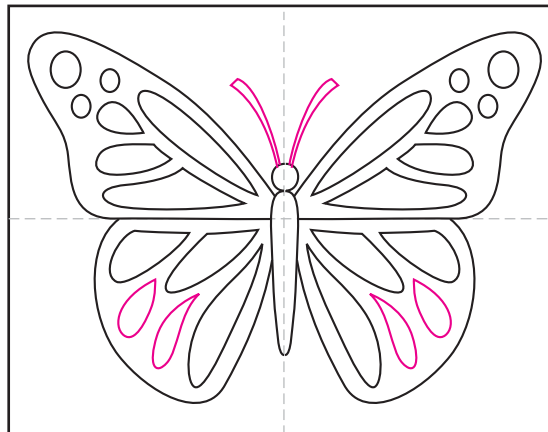
5. Finish the symmetrical shapes.



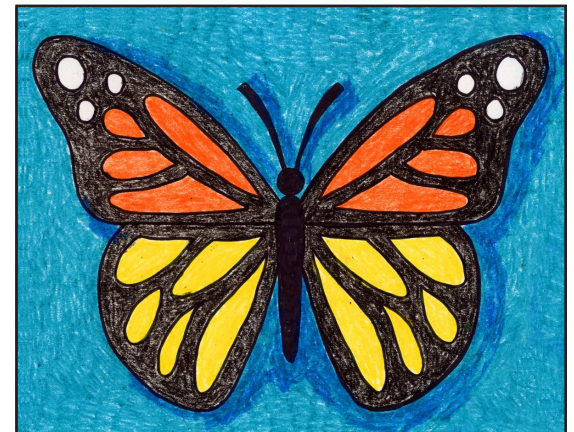
6. Start the bottom symmetrical shapes.



7. Add two more shapes on each side.



8. Finish the bottom shapes, add antennae.



9. Trace with a marker and color.

