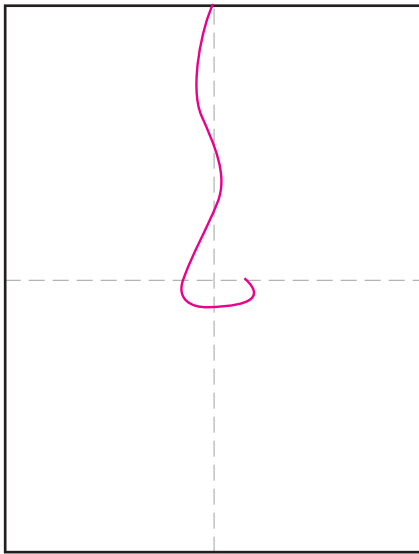
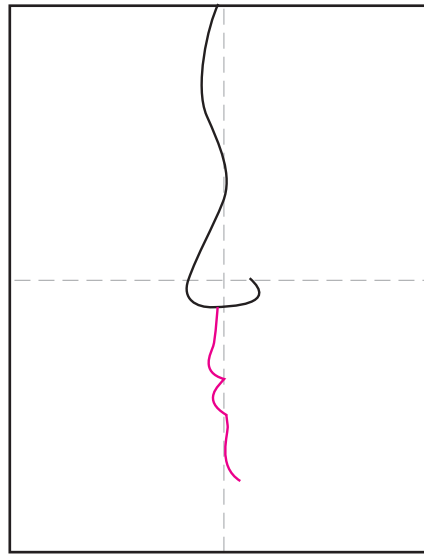


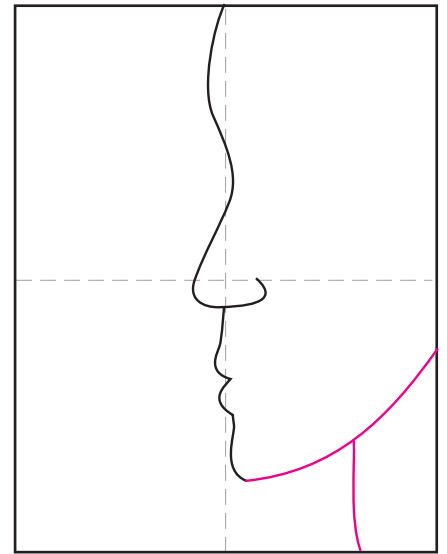
How to Draw like Picasso



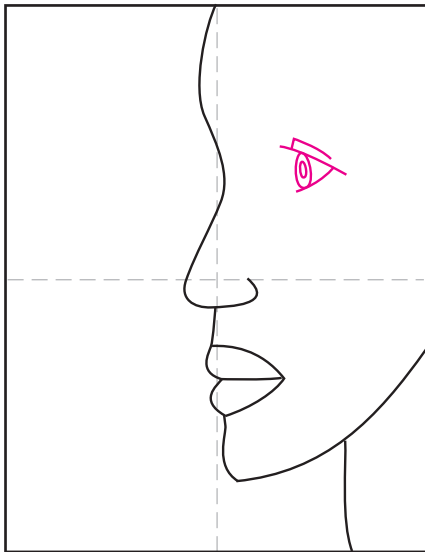
1. Start profile forehead and nose.



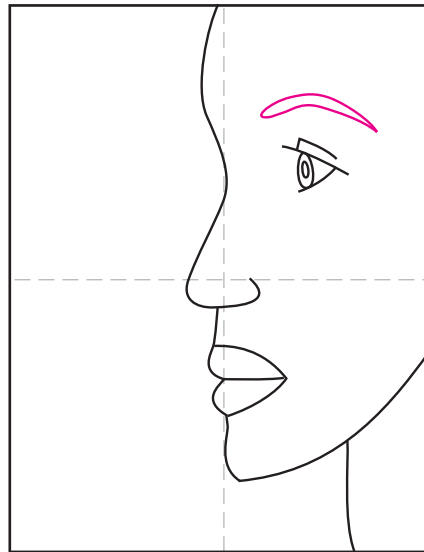
2. Continue down with the mouth.



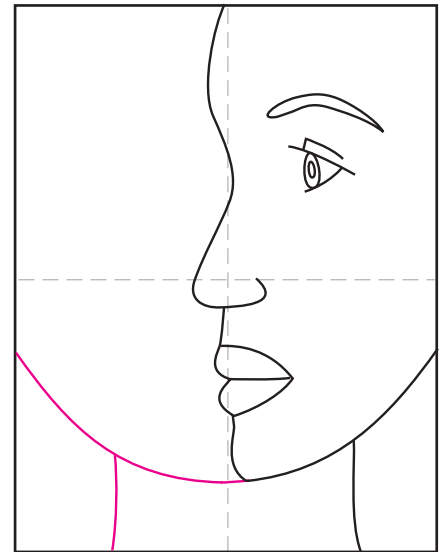
3. Add chin and neck.



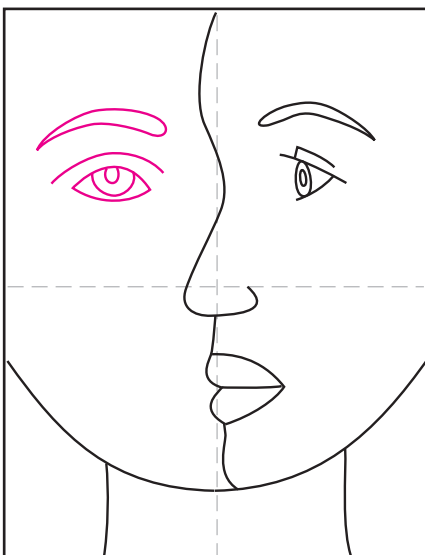
4. Start the profile eye.



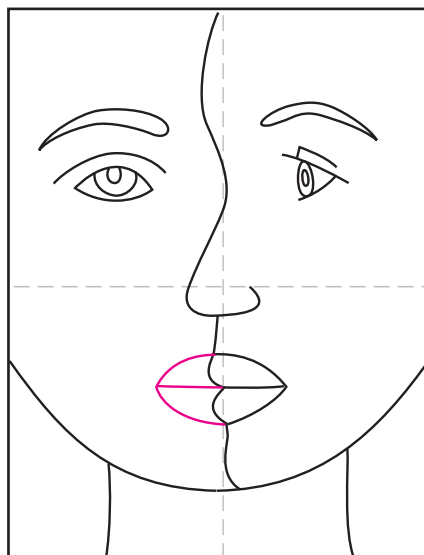
5. Finish with the brow.



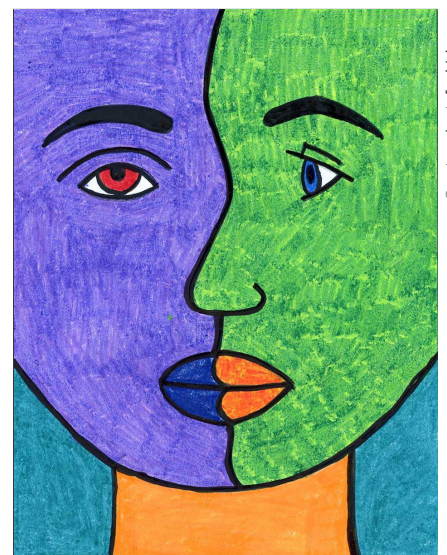
6. Continue the chin line, add neck.



7. Draw the front view eye.



8. Finish the front view lips.



9. Trace with thick marker and color.

Picasso

