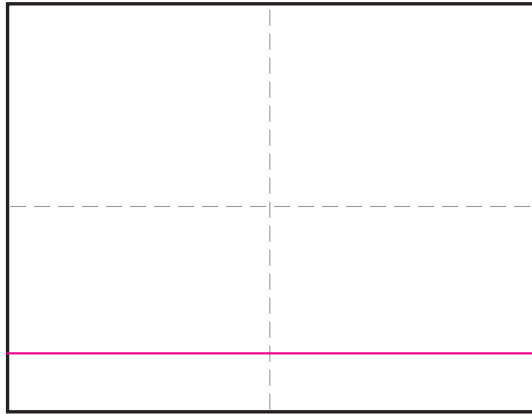
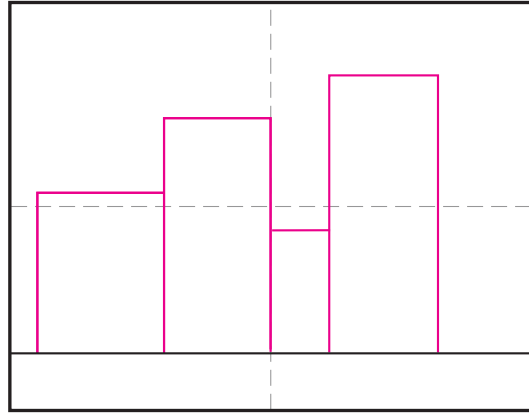


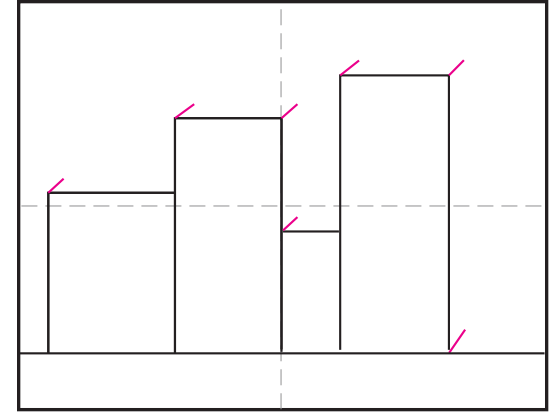
Draw Easy 3D Buildings



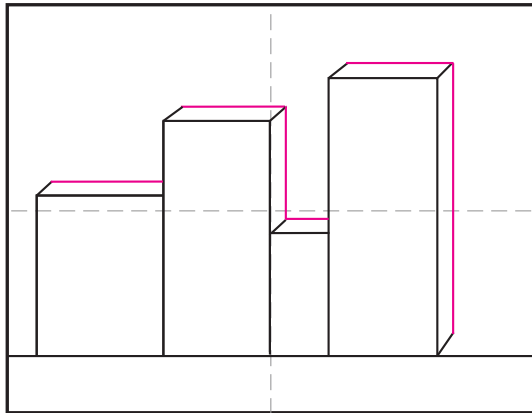
1. Draw a ground line.



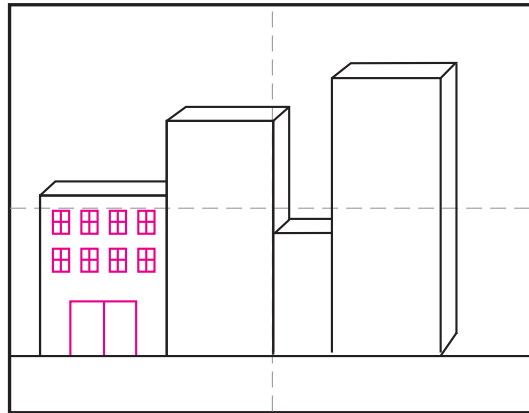
2. Add touching rectangles above.



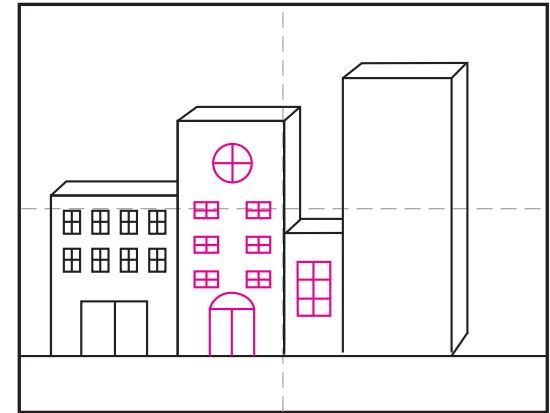
3. Draw 45° angle lines at corners shown.



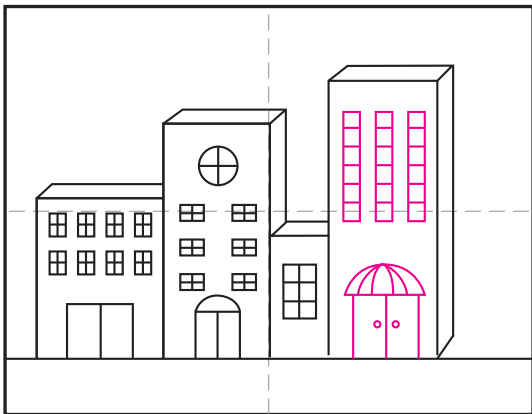
4. Connect ends with straight lines.



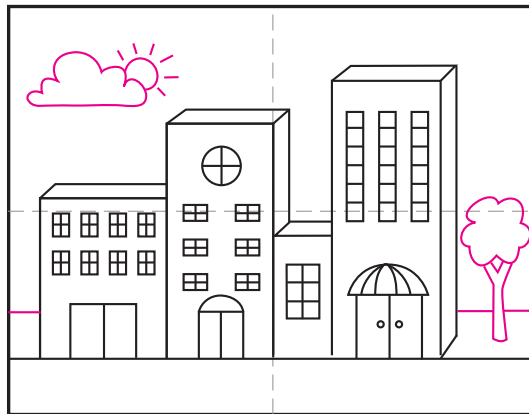
5. Start adding doors and windows.



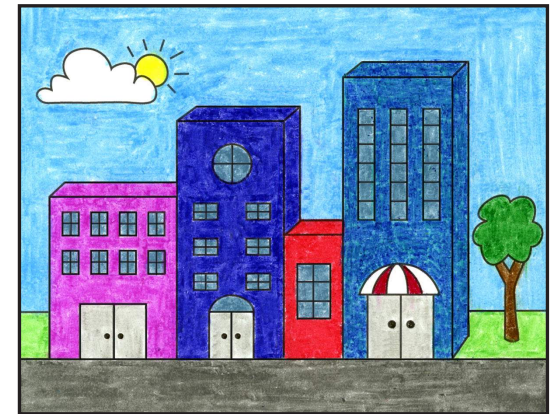
6. Continue adding doors and windows.



7. Finish the doors and windows.



8. Add a tree, cloud and sun.



9. Trace with a marker and color.

Easy 3D Buildings

