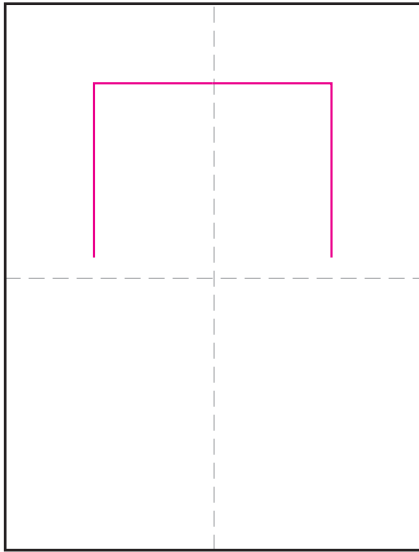
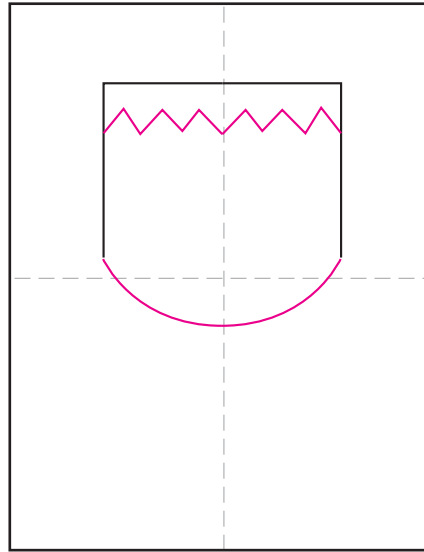


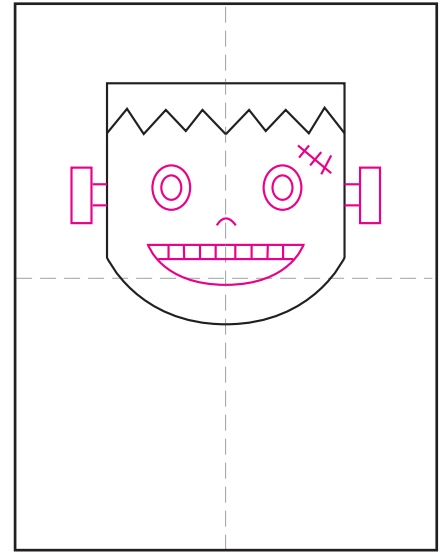
Draw an Easy Frankenstein



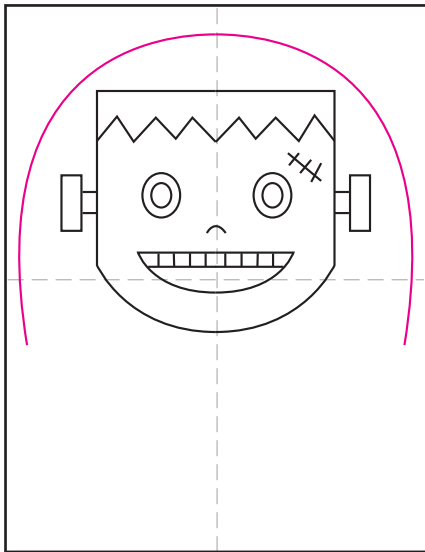
1. Start the head.



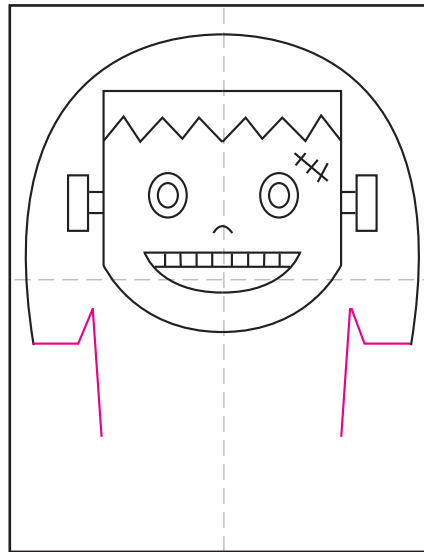
2. Add the chin and zig zag hair.



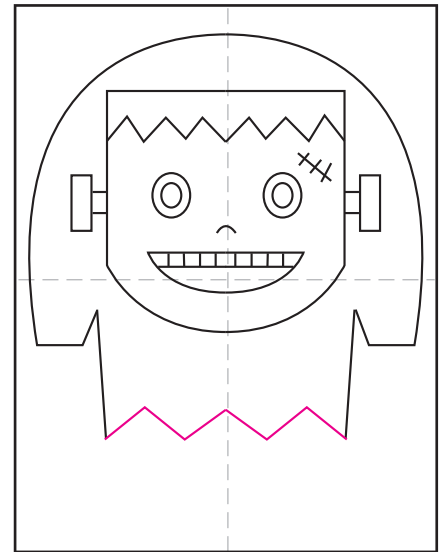
3. Draw eyes, nose, mouth, screws.



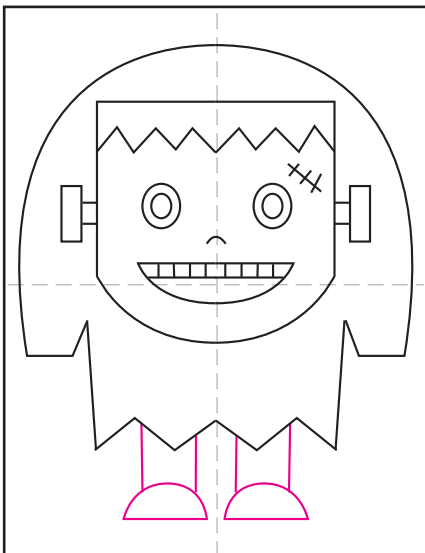
4. Draw the shoulders.



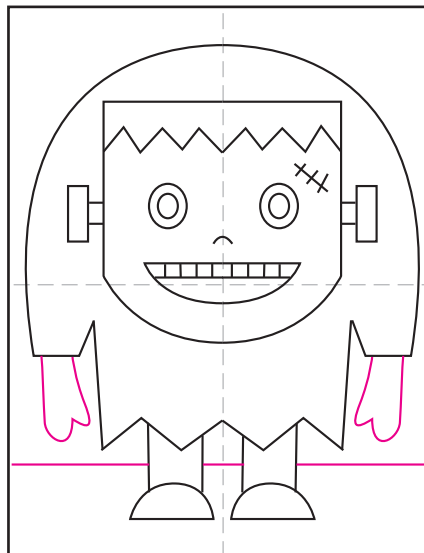
5. Add the sleeves.



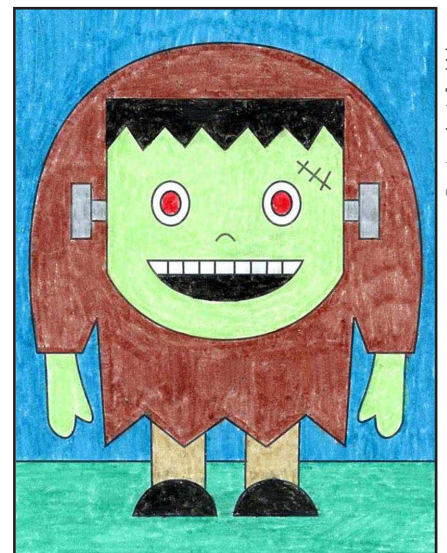
6. Draw the zig zag hem.



7. Draw the legs and feet.



8. Add hands and horizon line.



9. Trace with a marker and color.

Easy Frankenstein

