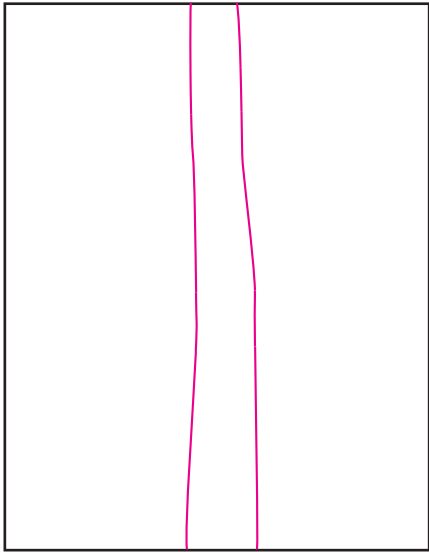


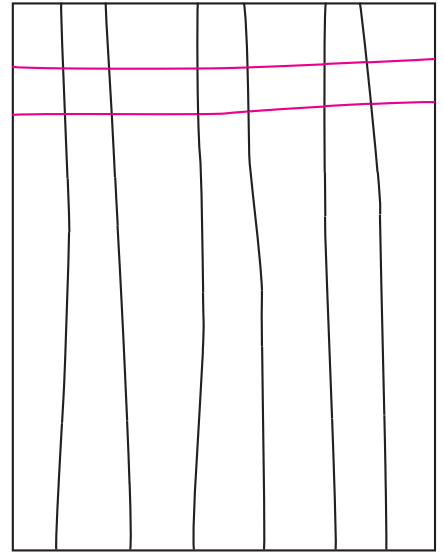
Draw Optical Weaving



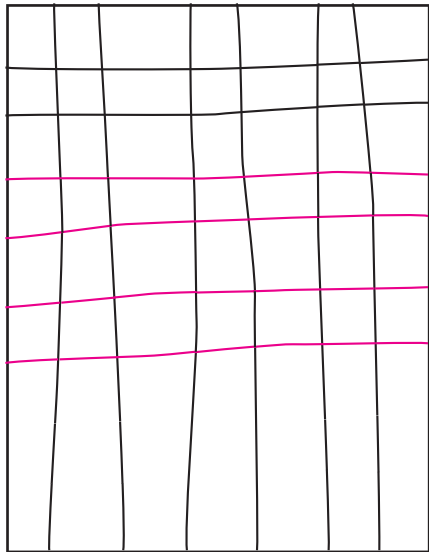
1. Draw a vertical strip in the center.



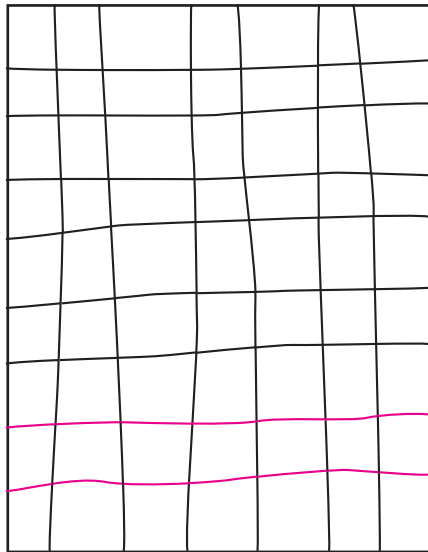
2. Add a strip on either side.



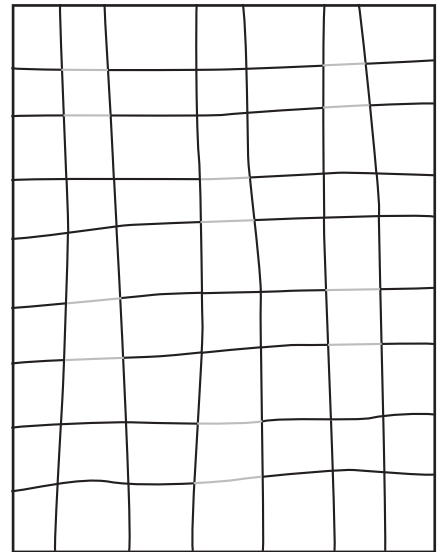
3. Draw a top horizontal strip.



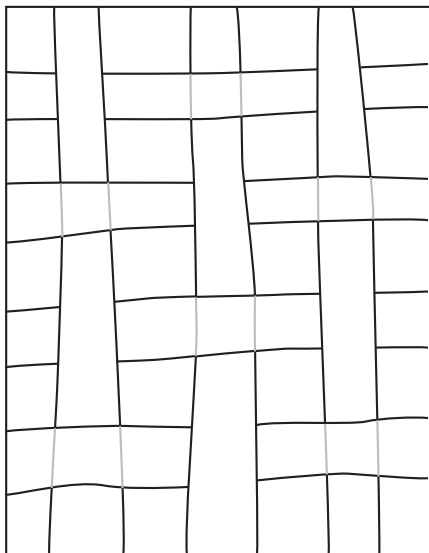
4. Add two more strips underneath.



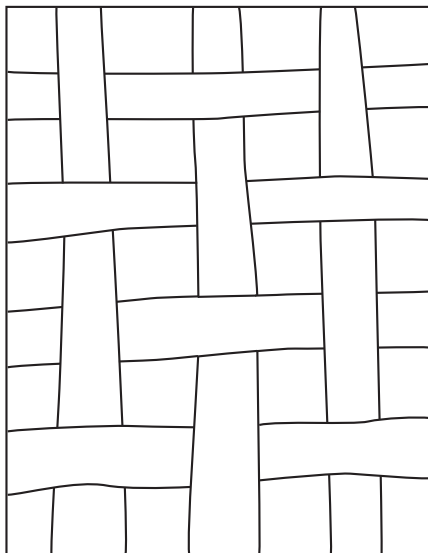
5. Add final strip near bottom.



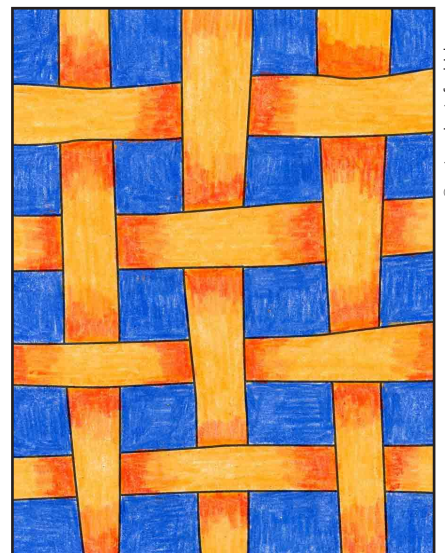
6. Erase the horizontal lines shown.



7. Erase the vertical lines shown.



8. Trace with a marker.



9. Use two similar colors to fill with main shade and "shadows".

Optical Weaving

