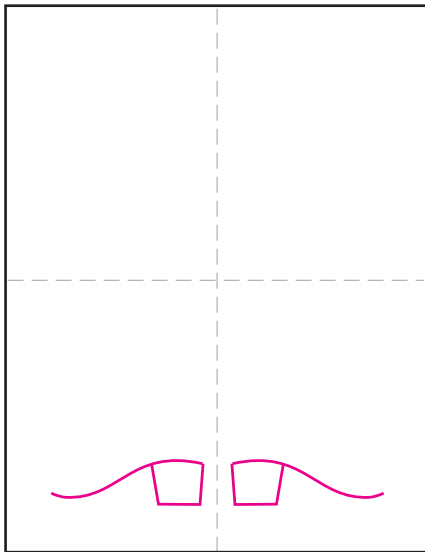
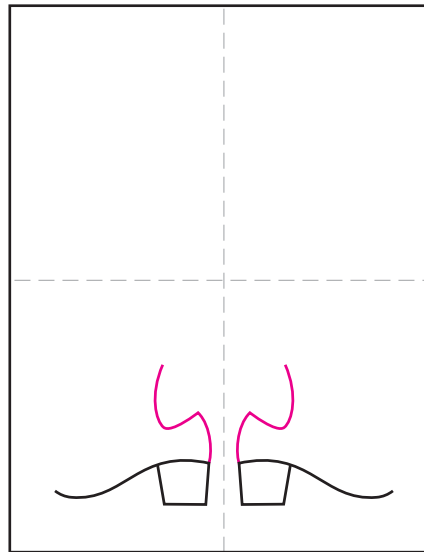


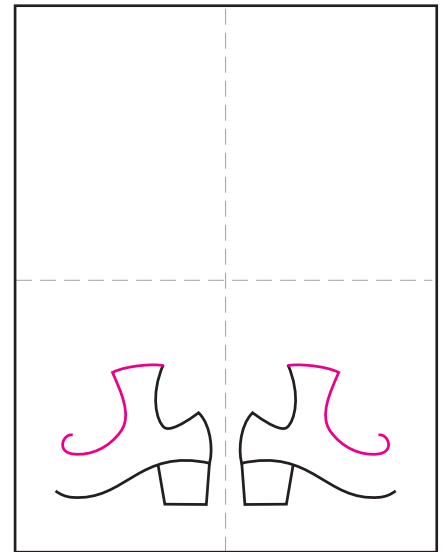
Draw Leprechaun Legs



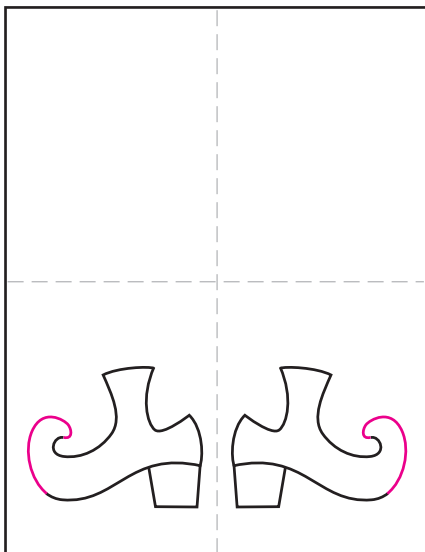
1. Draw symmetrical heels and arches.



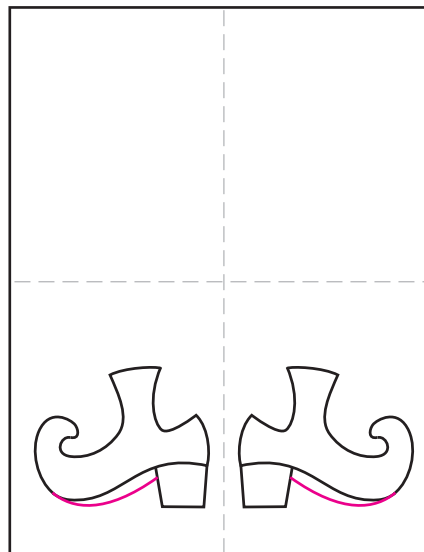
2. Continue with the back heels.



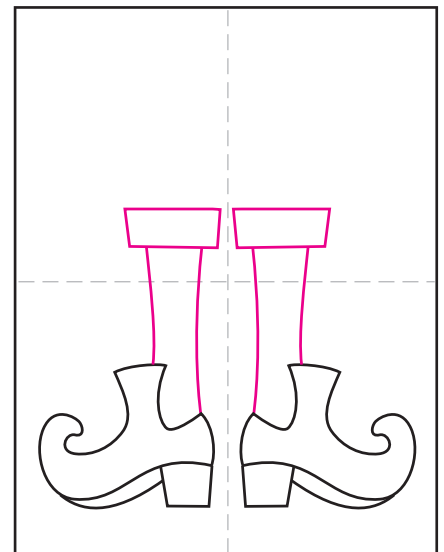
3. Continue the tops of the shoe.



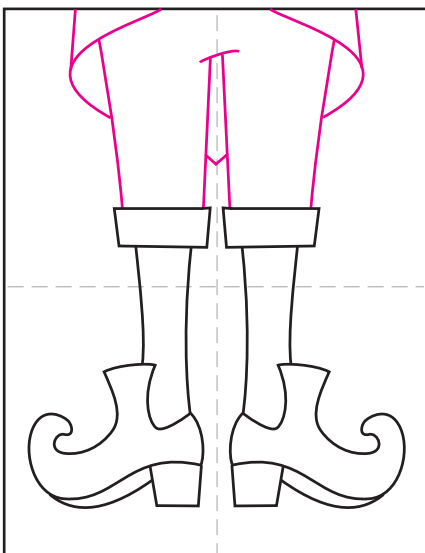
4. Finish with symmetrical toes.



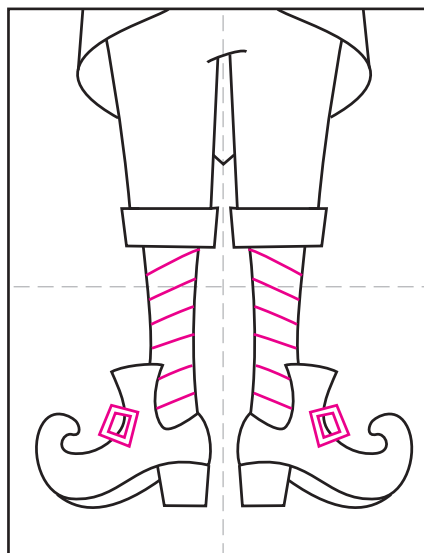
5. Add the bottom sole lines.



6. Draw the ankles and pant cuffs.



7. Finish the pants and jacket.



8. Draw the buckles and leg stripes.



9. Trace with a marker and color.

Leprechaun Legs

