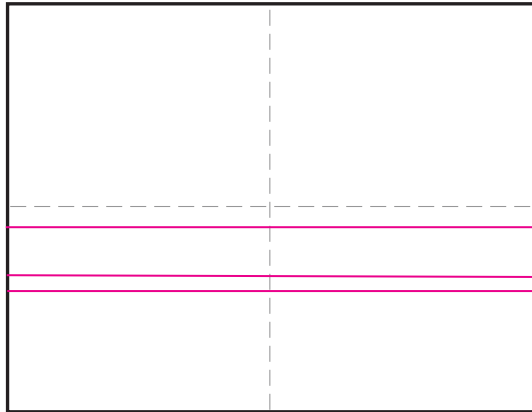
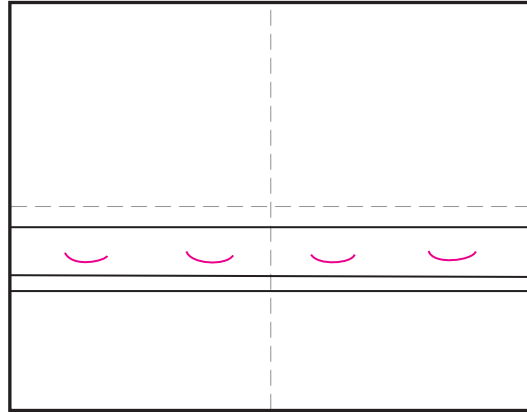


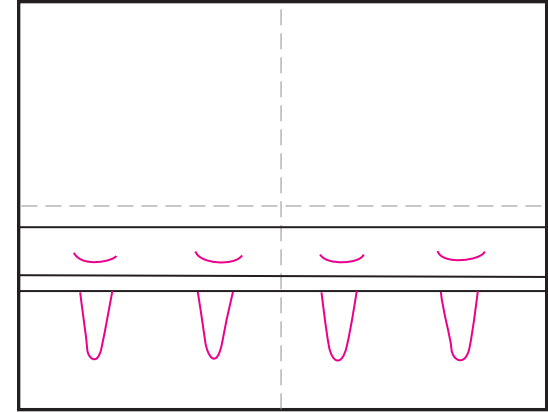
Draw Ice Cream Cones like Thiebaud



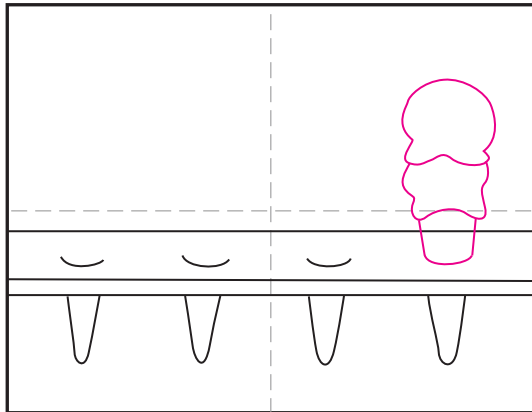
1. Draw three lines for the board.



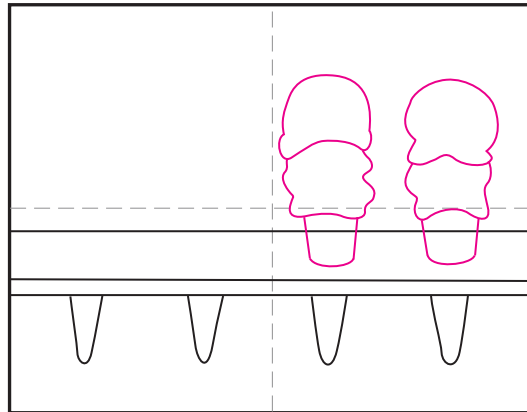
2. Add the four even spaced curves.



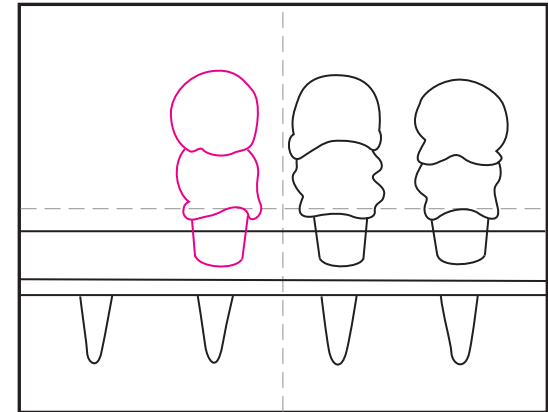
3. Draw the bottoms of the cones below.



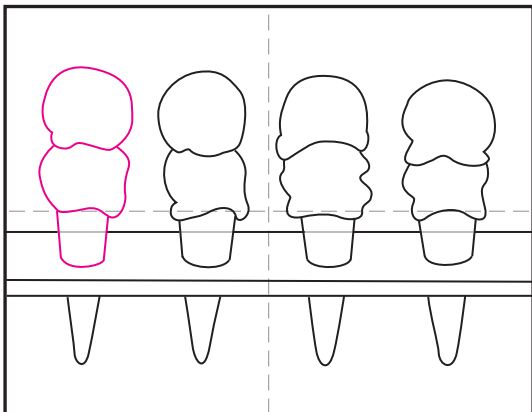
4. Finish the cone on the right.



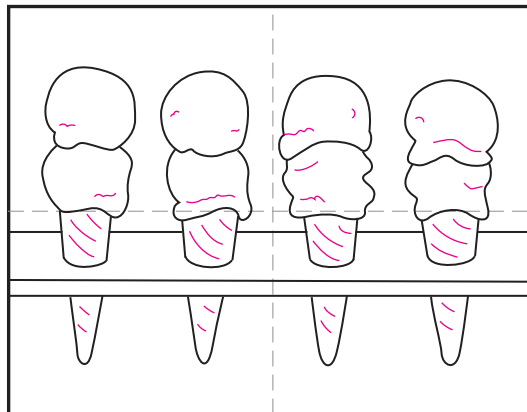
5. Finish the second cone.



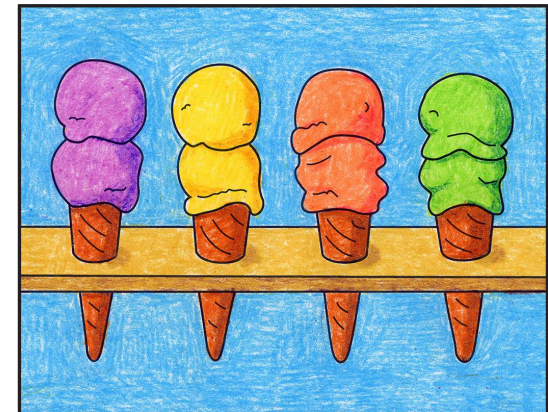
6. Finish the third cone.



7. Finish the fourth cone. Erase line inside each.



8. Add some small detail lines.



9. Trace with a marker and color.

Ice Cream Cones like Thiebaud

