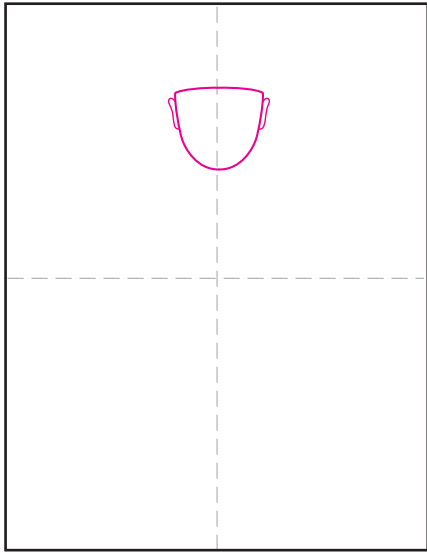
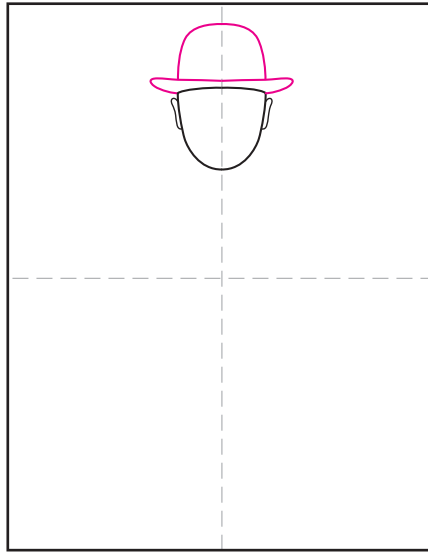


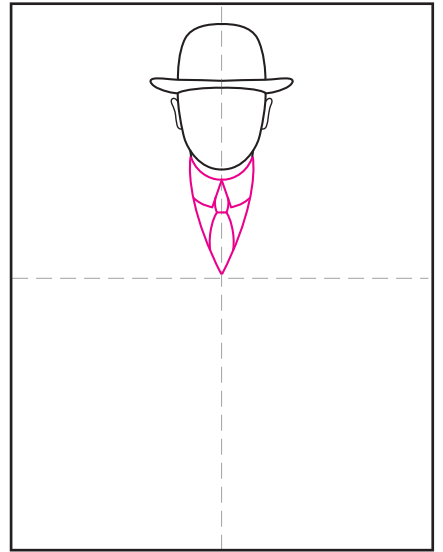
Draw like Magritte



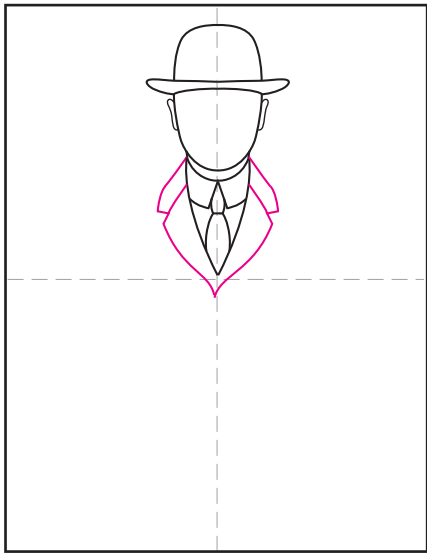
1. Start the head with a U shape and ears.



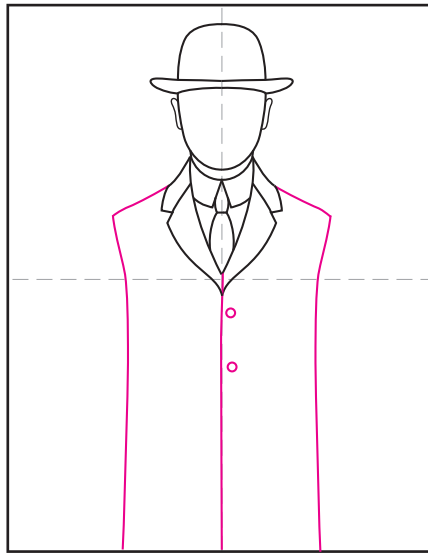
2. Add a bowl hat on top.



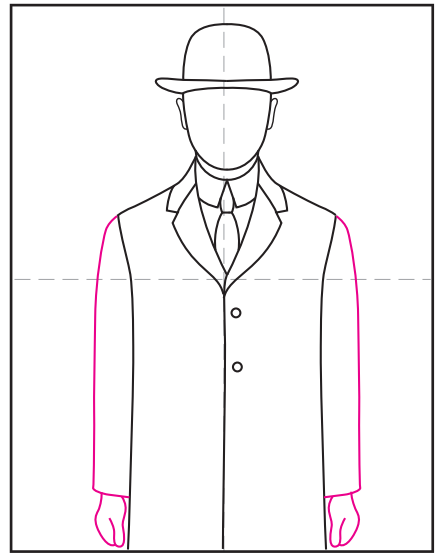
3. Draw the shirt collar and tie.



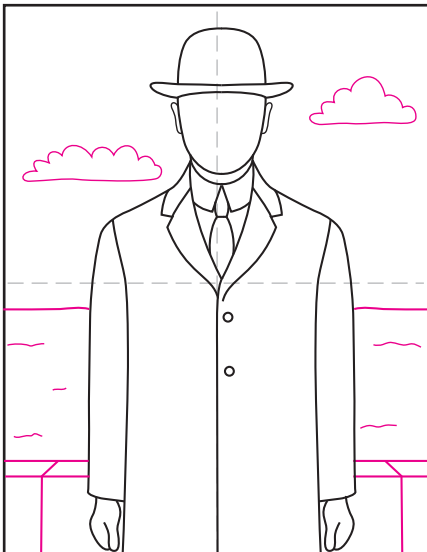
4. Add the coat lapel.



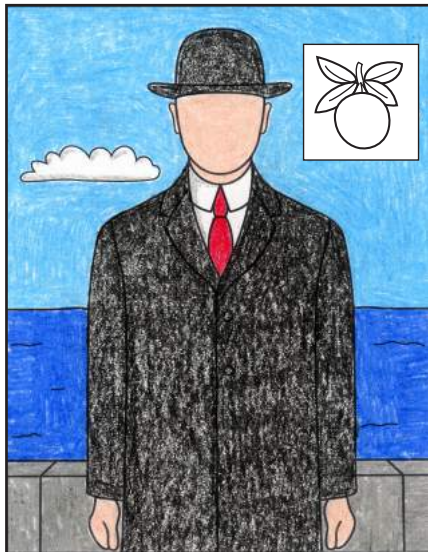
5. Draw the body of the coat.



6. Add the sleeves and hands.



7. Draw the wall, sea and sky.



8. Option #1: Draw, color on another piece of paper. Option #2: Draw directly on the blank face, trace, color.



9. Glue the object on the face if necessary. This example is like Magritte's original, a green apple.

Draw like Magritte

