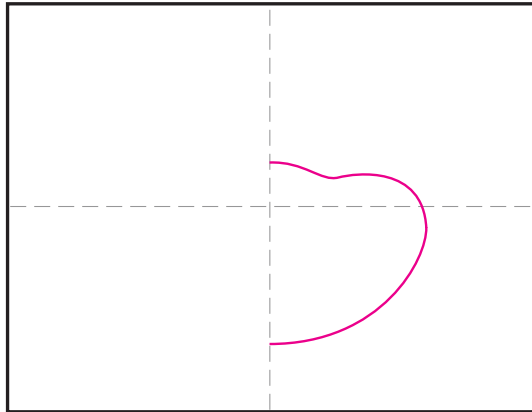
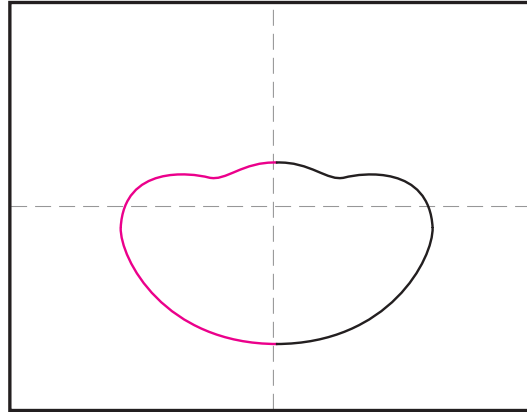


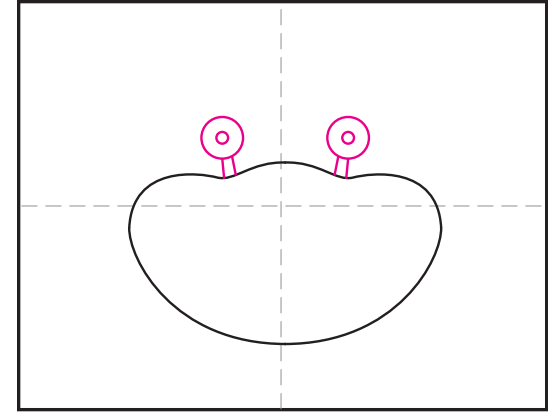
# How to Draw a Crab



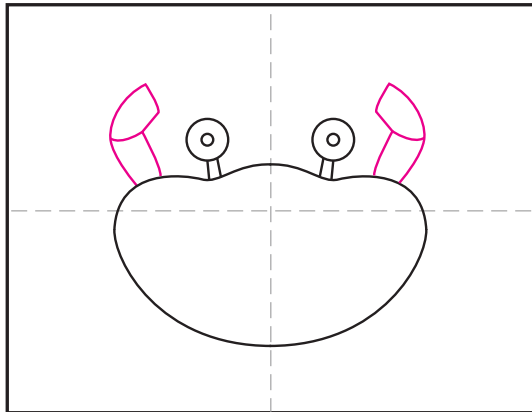
1. Draw the right side of the shell.



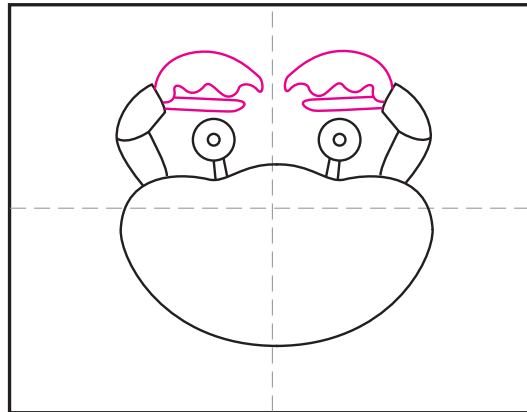
2. Add a matching left side of the shell.



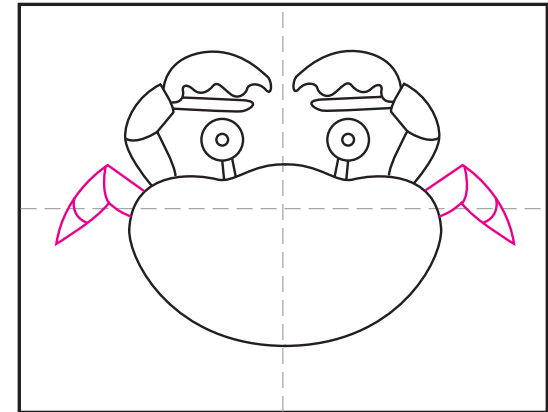
3. Draw the two eyes.



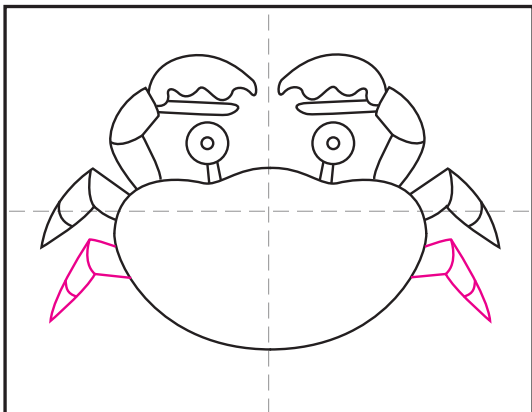
4. Start the two front legs.



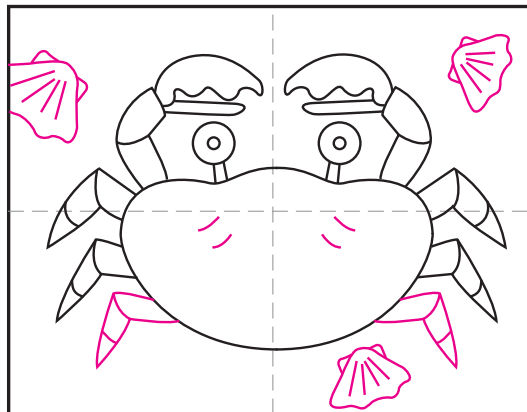
5. Add large claws at the ends.



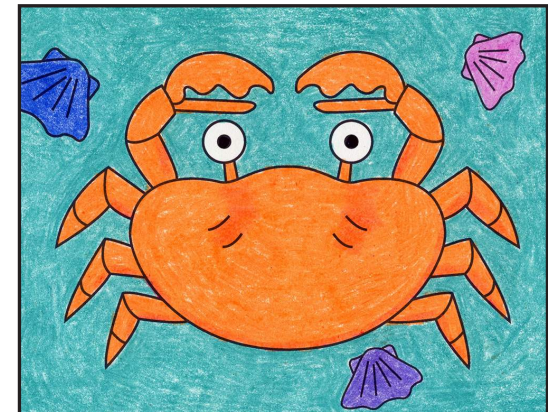
6. Draw two matching front legs.



7. Draw the next two matching legs.



8. Add the back two legs. Finish with shells.



9. Trace with a marker and color.

# Crab

