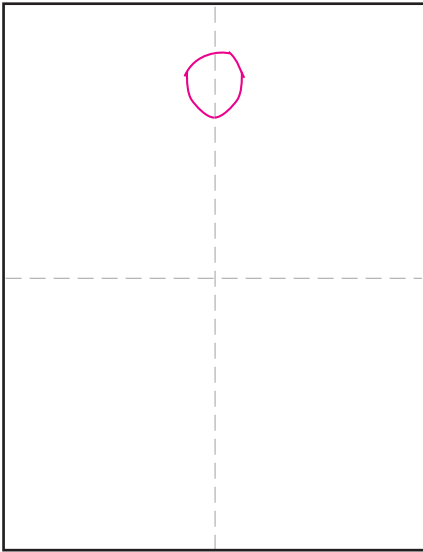
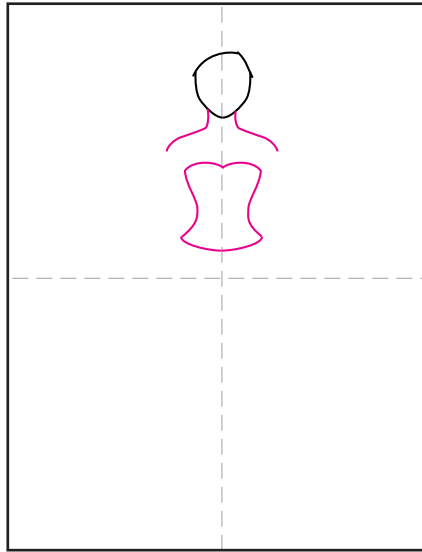


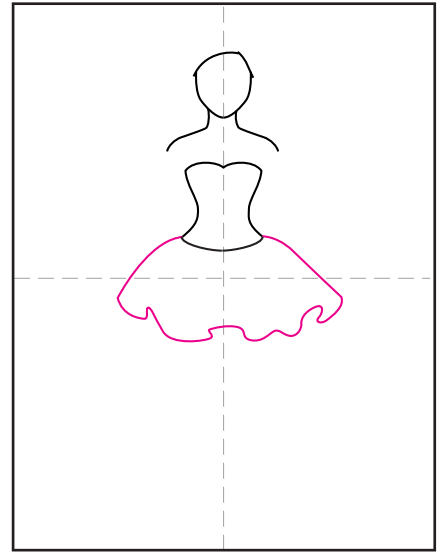
Draw a Dress



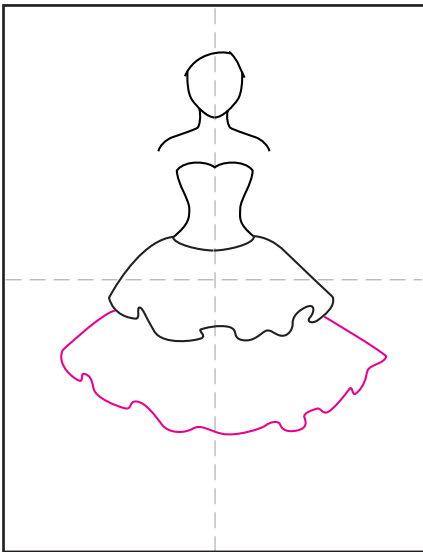
1. Start by drawing the head.



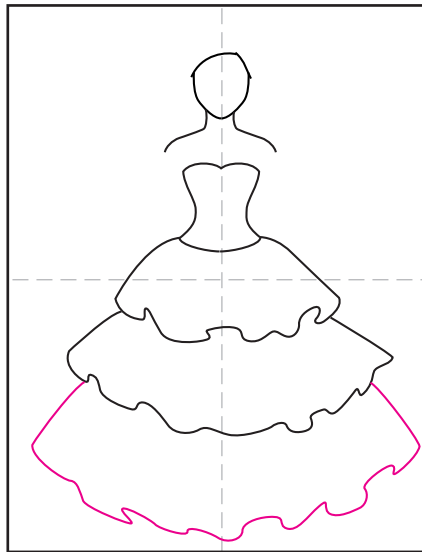
2. Add the shoulders and dress bodice.



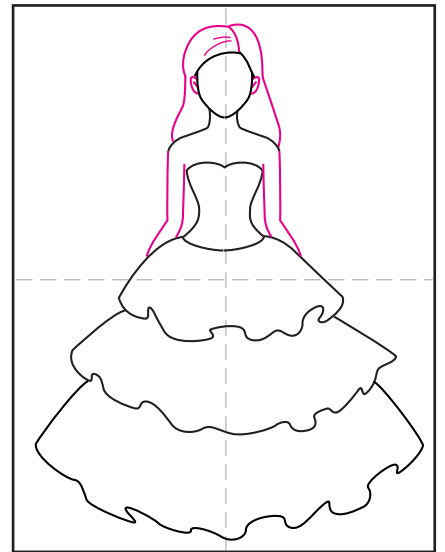
3. Draw the first ruffle below.



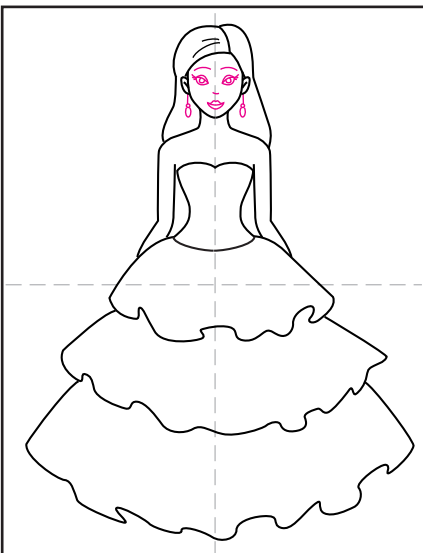
4. Add a second ruffle below.



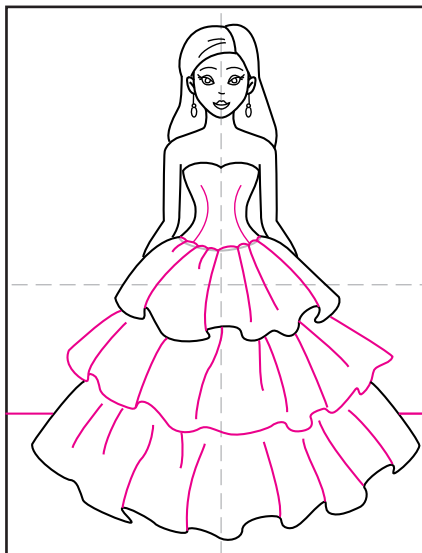
5. Draw the third ruffle below.



6. Finish the hair, ears and arms.



7. Draw the face and earrings.



8. Add the fold lines to the ruffles.



9. Trace with a marker and color.

Dress

