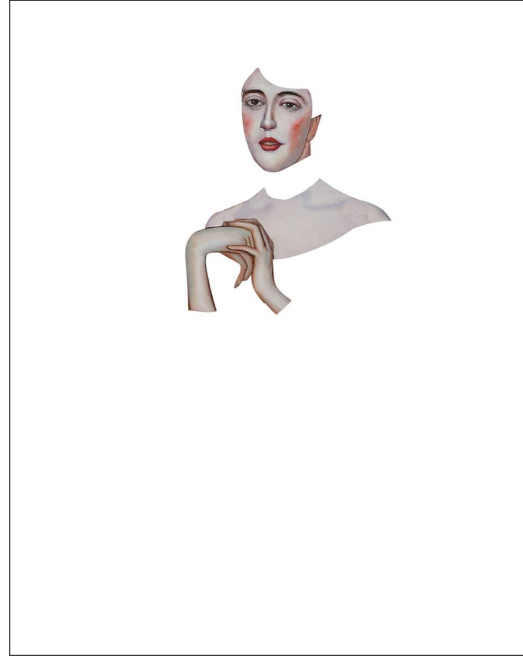


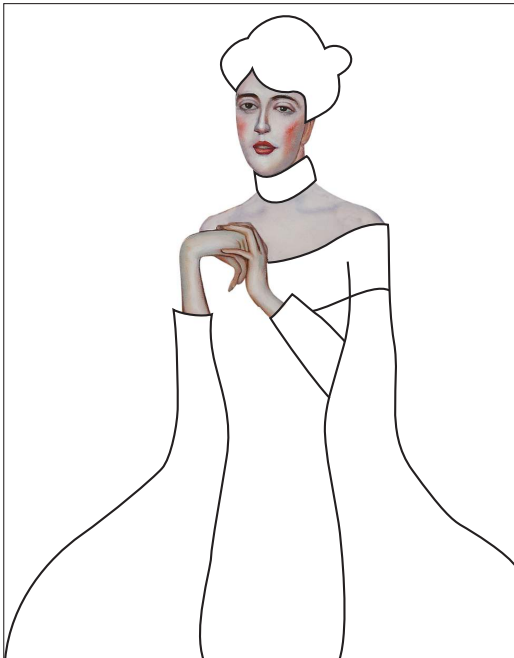
# How to Draw like Gustav Klimt



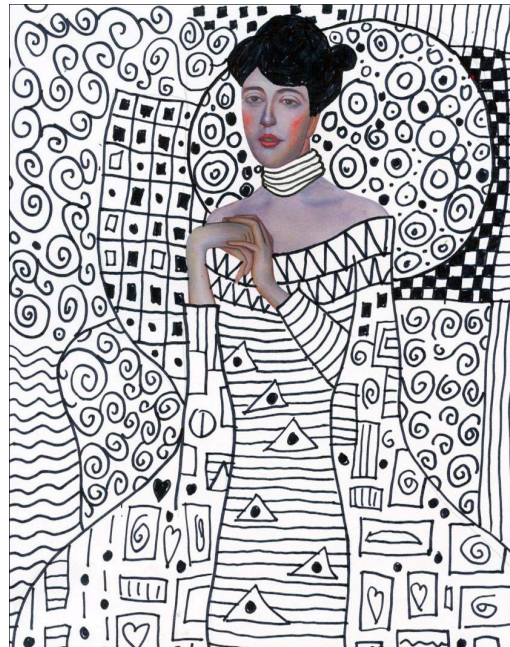
"Portrait of Adele Bloch Bauer" by Gustav Klimt, 1907



Print the color template for each student.



Students draw the main shapes of the hair and clothes. The lines are traced with a thick black marker.



A fine tip marker is used to fill shapes in with lots of patterns.









“Portrait of Adele Bloch Bauer” by Gustav Klimt, 1907



