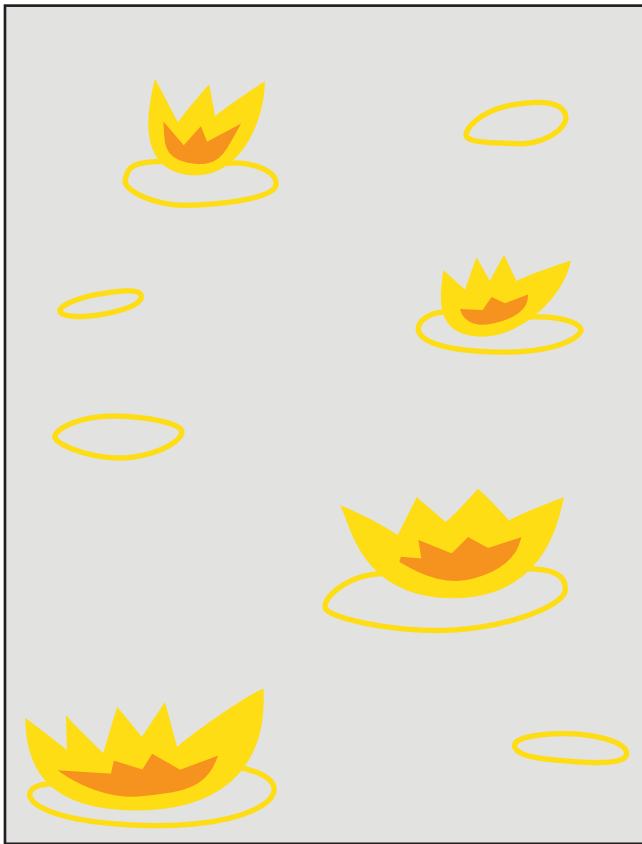
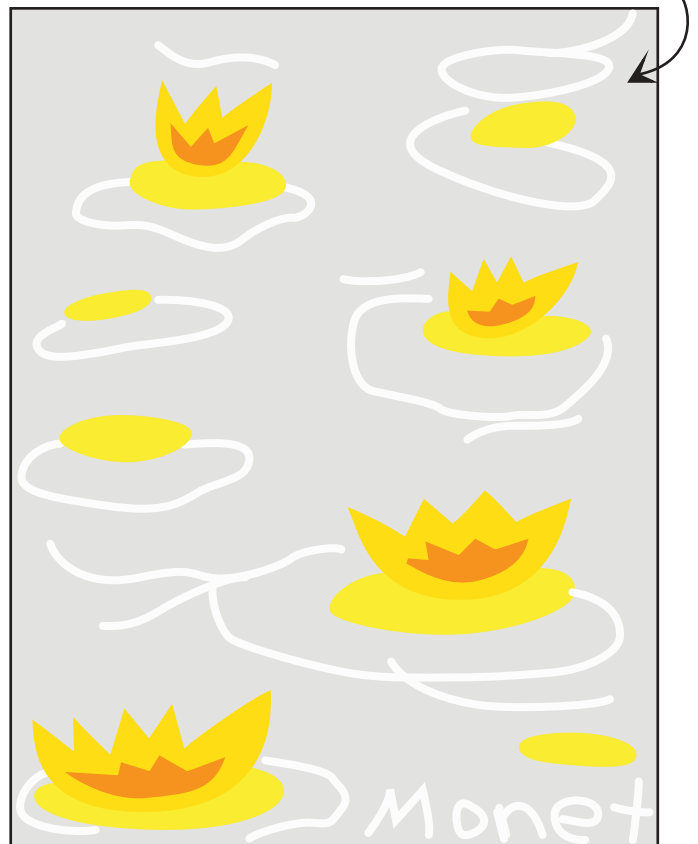


Draw a Water Lily

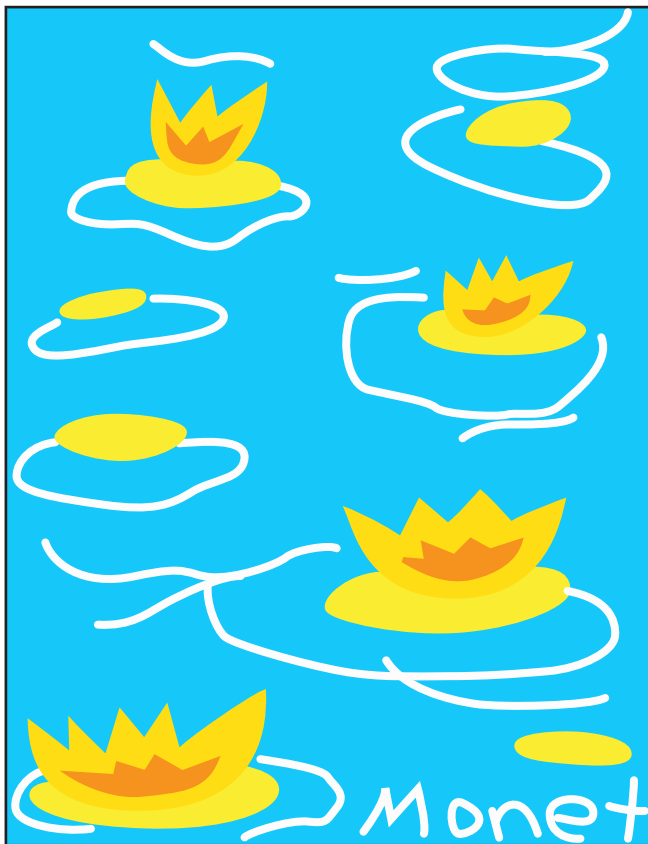
Gray color used to so the white lines may be seen.



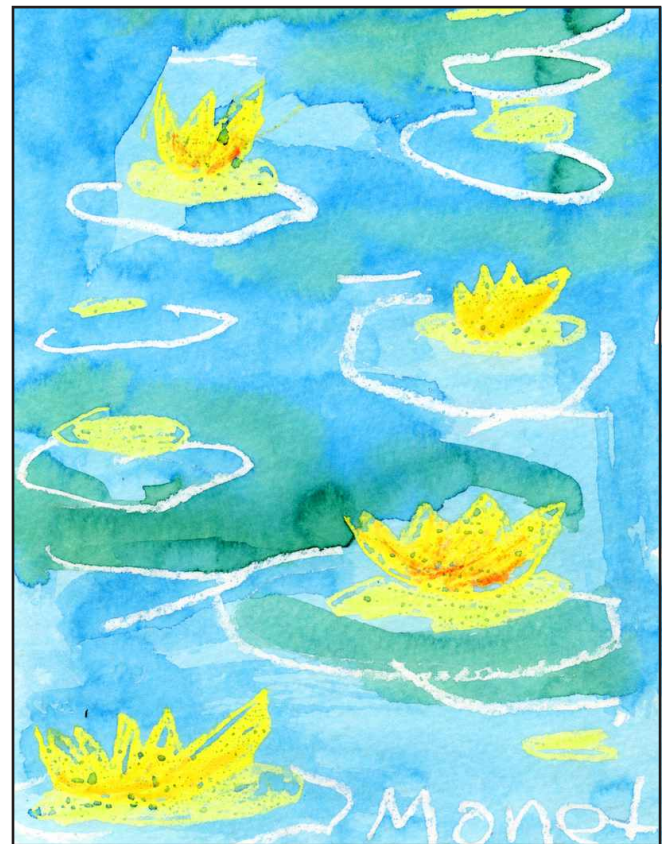
1. Use a yellow crayon to draw about four lilies. Add rings below. Fill the flowers with orange and yellow crayon color. Press hard so they have thick color.



2. Fill the rings with yellow crayon color. If possible, use a different shade of yellow. Use a white crayon to draw rings on the paper. Press very hard.



3. Brush a very watery blue paint over everything.



4. While the paint is still wet, add some green spots of watercolor on top of the blue so they blend.

Water Lily

