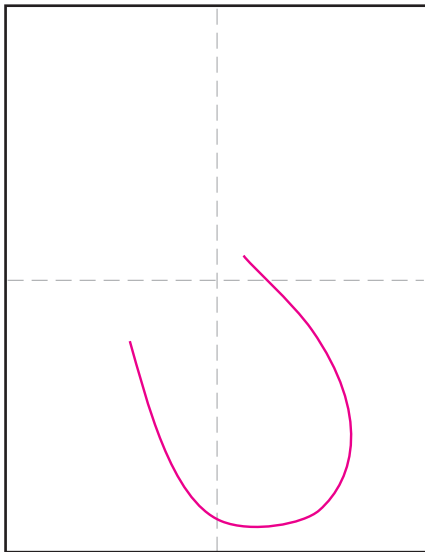
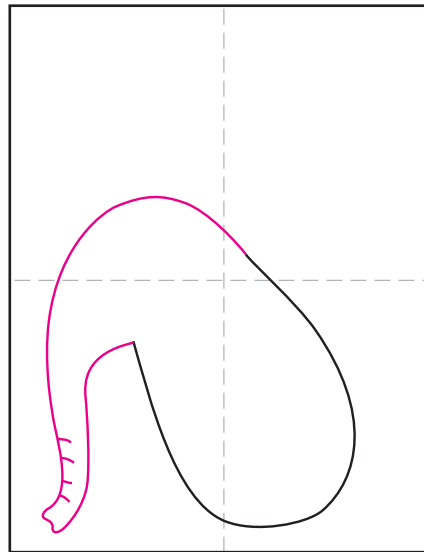


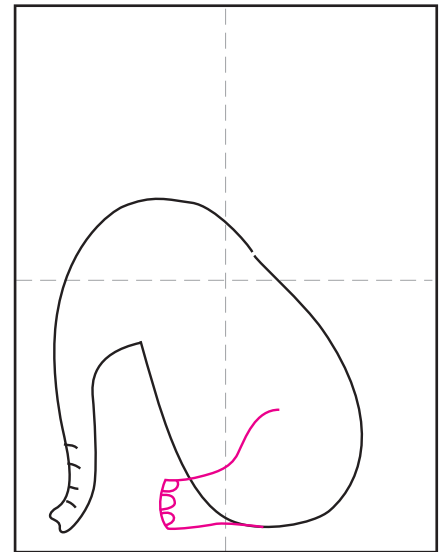
How to Draw a Butterphant (Butterfly + Elephant)



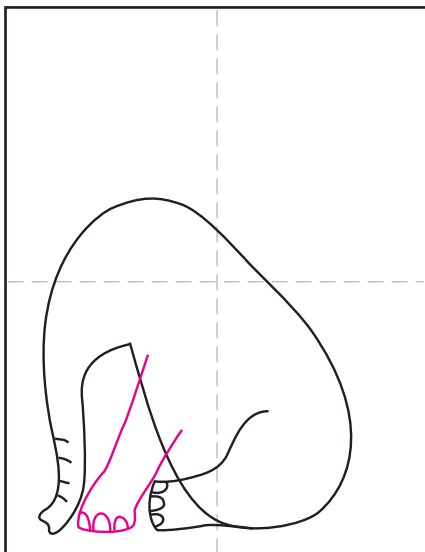
1. Draw a U shape for the belly.



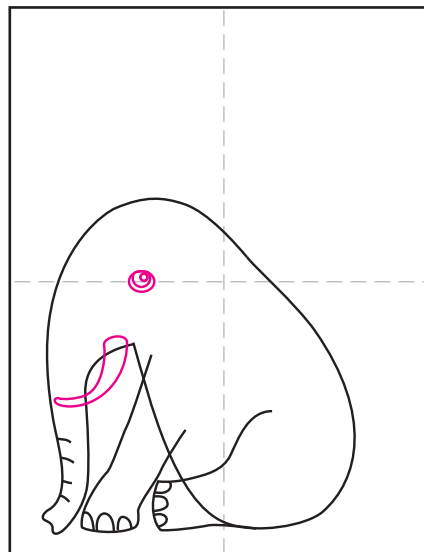
2. Add a simple head and trunk.



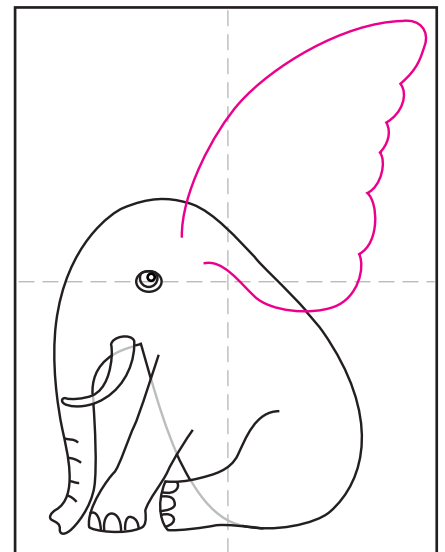
3. Draw the back leg.



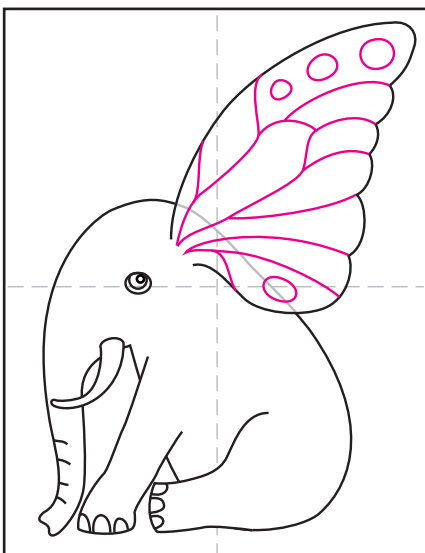
4. Add the front leg as shown.



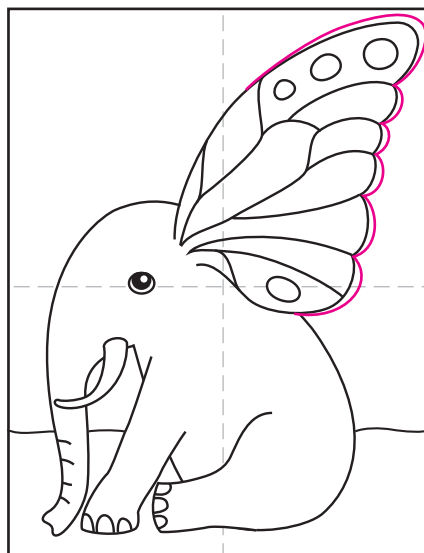
5. Draw a tusk and an eye.



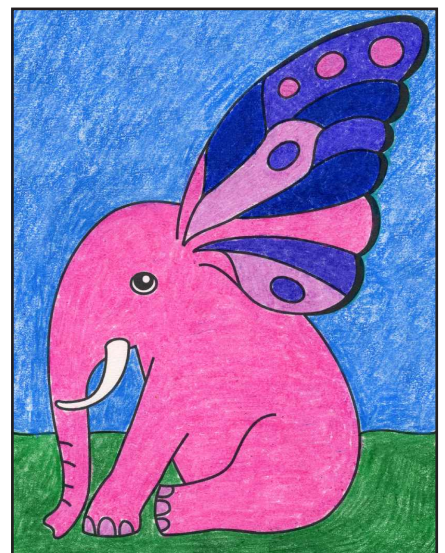
6. Erase the overlapped lines. Add an ear.



7. Erase line, add wing patterns.

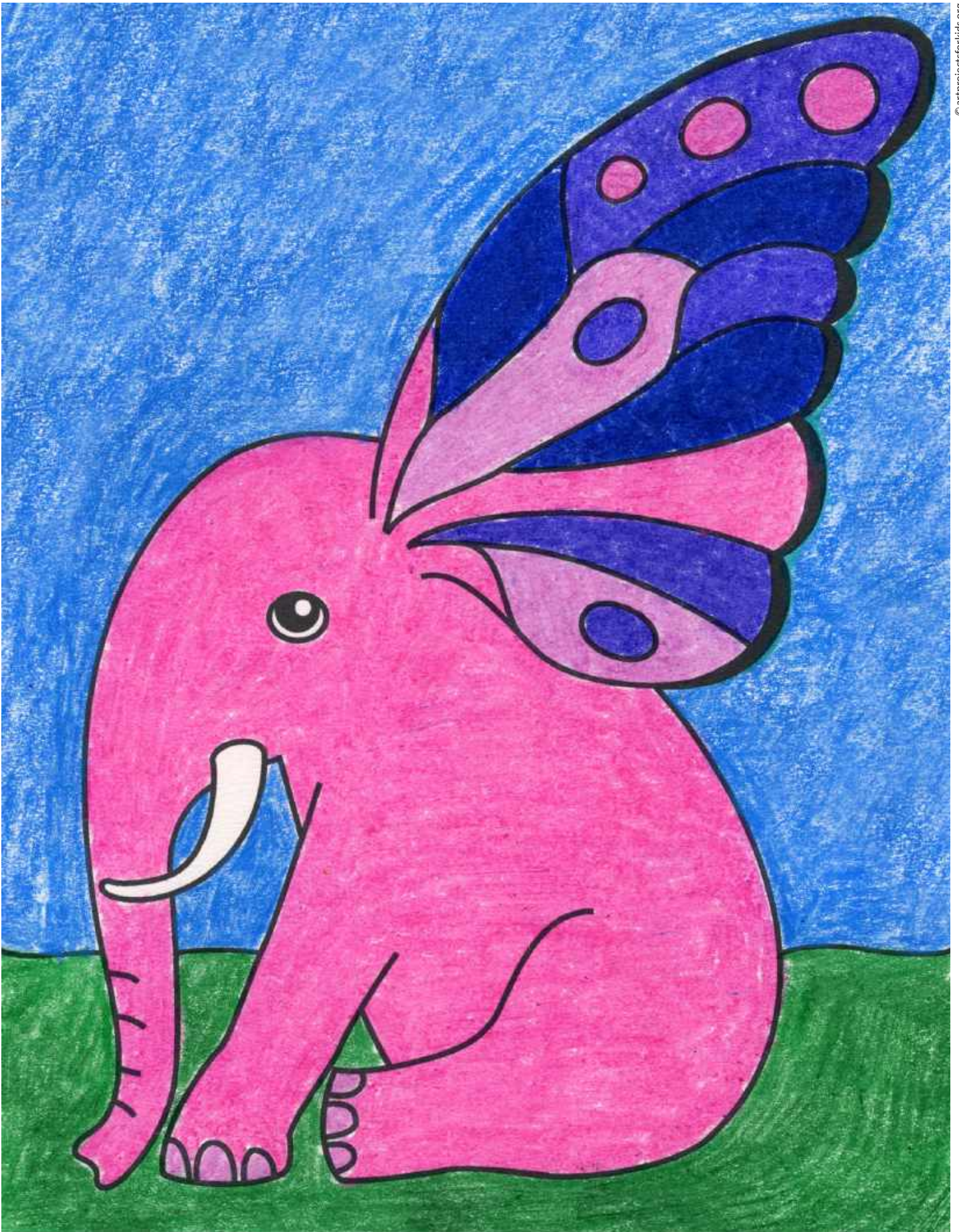


8. Add another scallop line to the ear.



9. Trace with a marker and color.

Butterphant (Butterfly + Elephant)



© artprojectsforkids.org