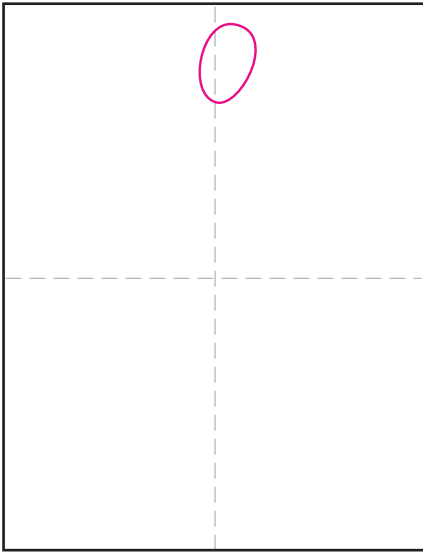
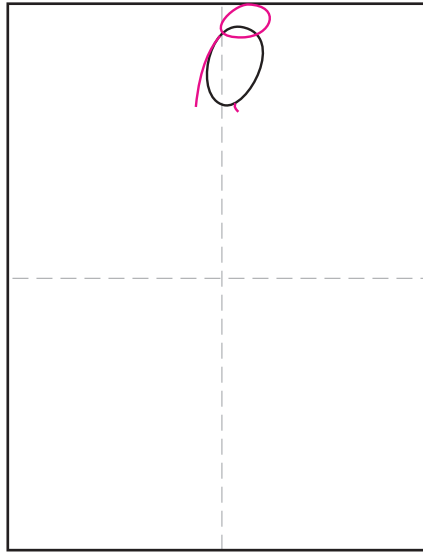


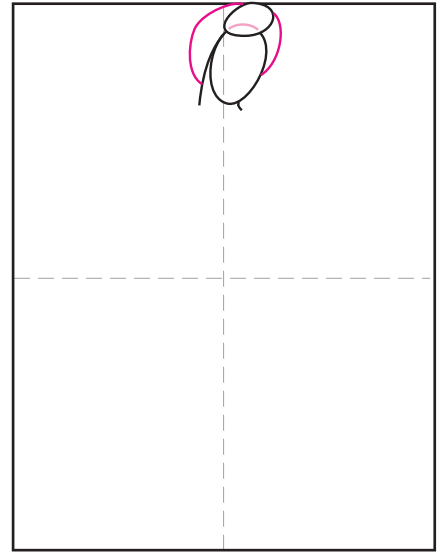
Draw a Dancing Lady



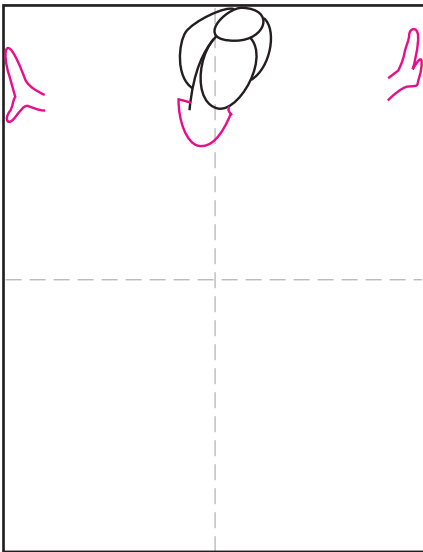
1. Draw a tilted oval for the head.



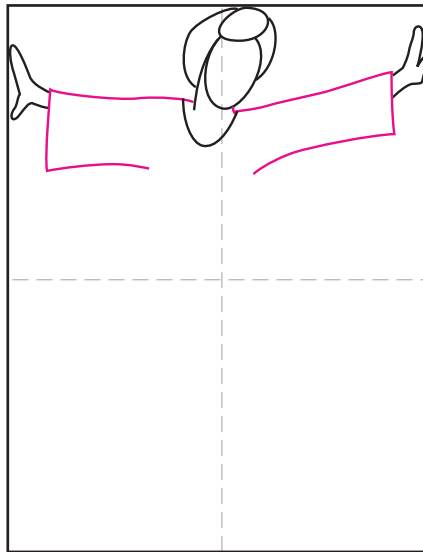
2. Add an oval on top, and neck below.



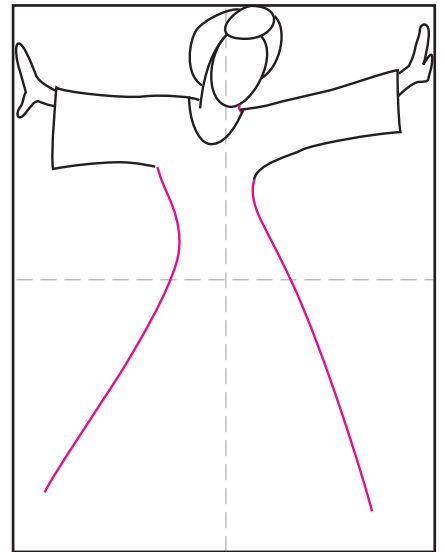
3. Finish the head band, erase line.



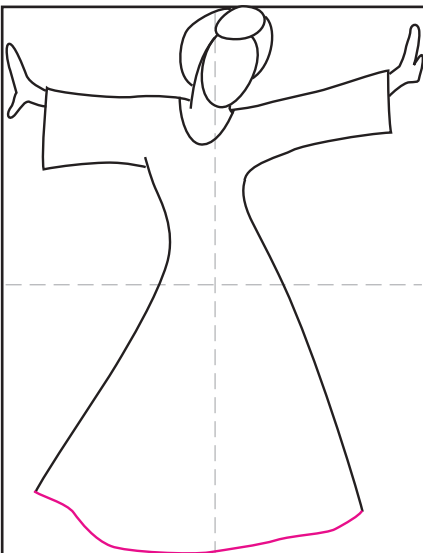
4. Draw neckline and hands.



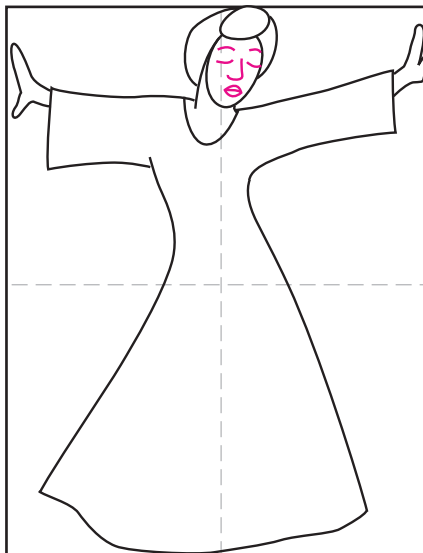
5. Connect hands to head with sleeves.



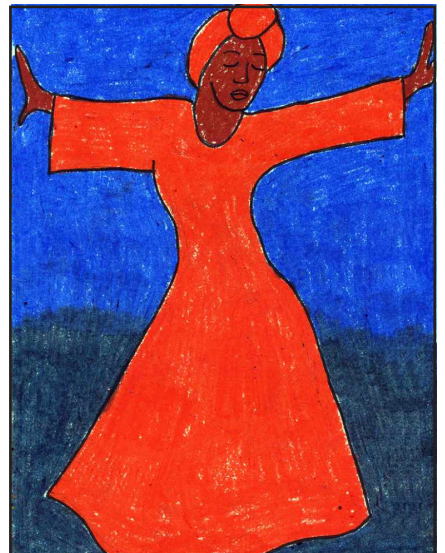
6. Add the sides of the dress.



7. Finish dress with curved hem.



8. Draw facial features.



9. Trace with a marker and color.

Dancing Lady

