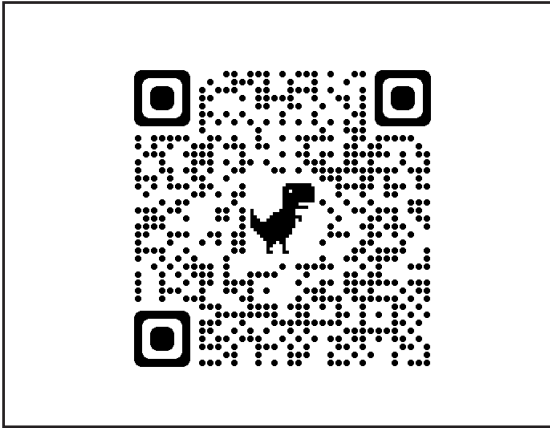
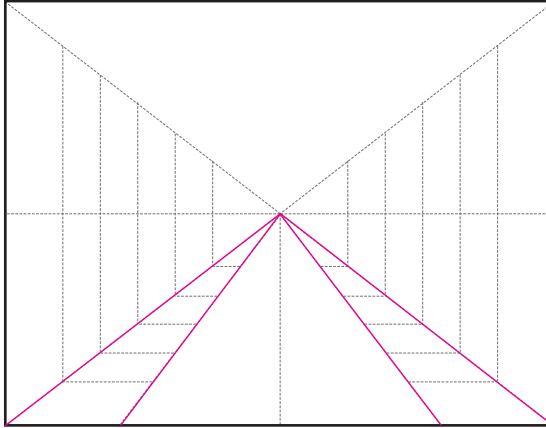


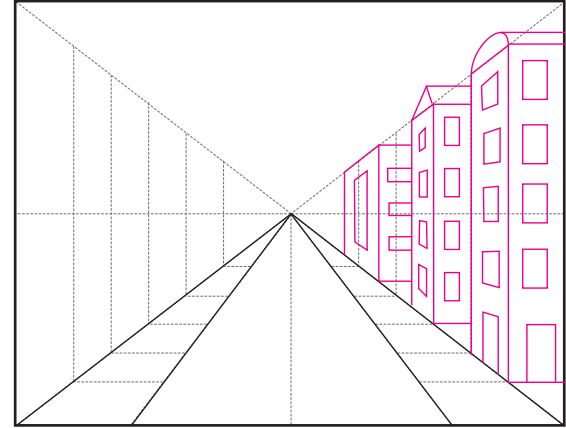
# City with One Point Perspective



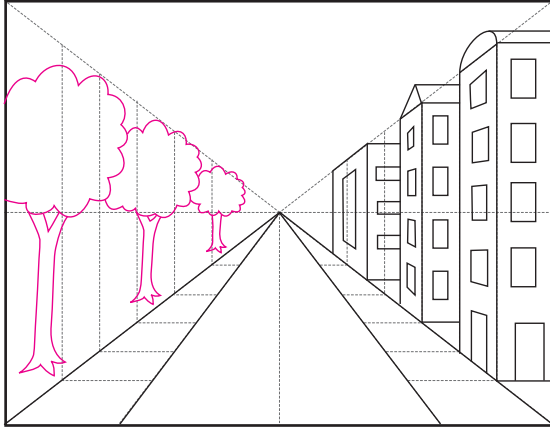
1. Scan to see a step by step YouTube video.



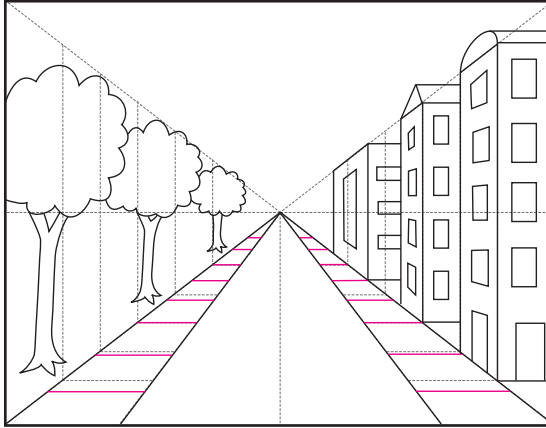
2. Start by tracing the sidewalk lines.



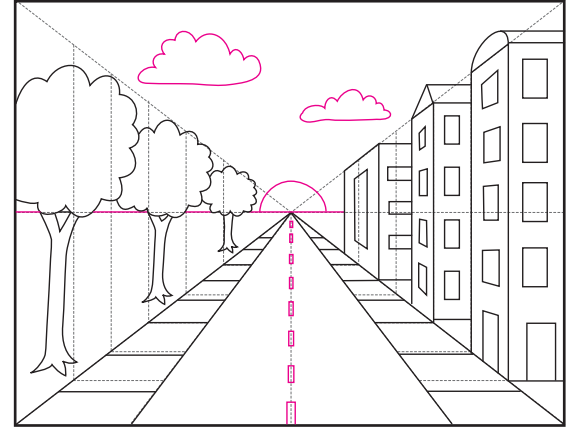
3. Draw 3 buildings with windows and doors.



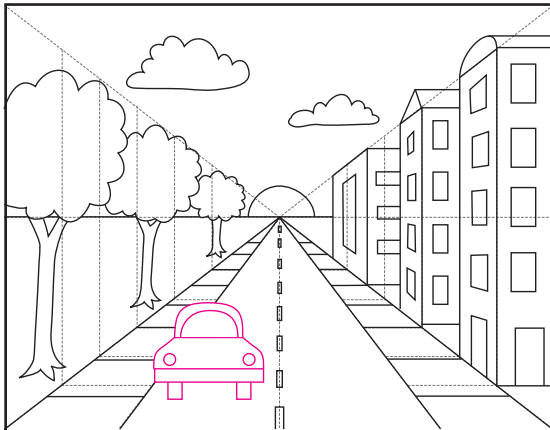
4. Draw a set of trees that get smaller.



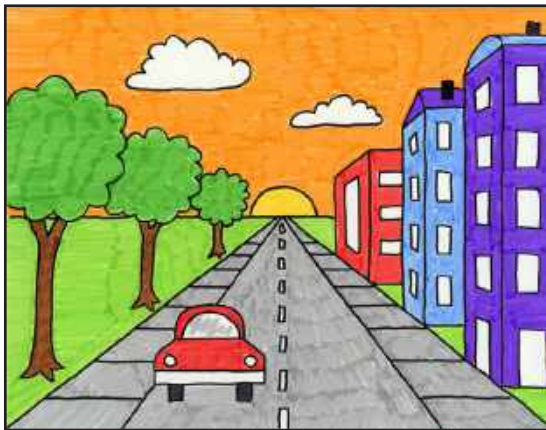
5. Add horizontal sidewalk lines.



6. Draw the center line. Add horizon and sky.



7. Draw a car somewhere on the road.



8. Trace and color with markers.



9. Add another layer of marker for shadows.

## City with One Point Perspective

