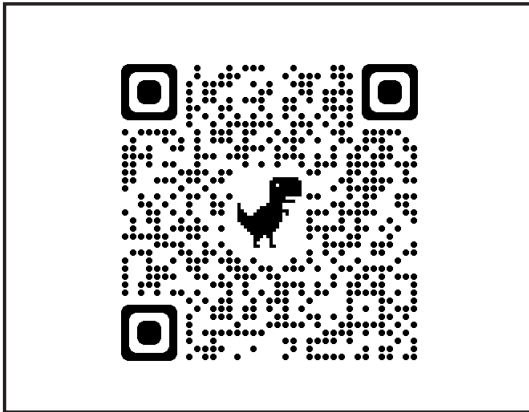
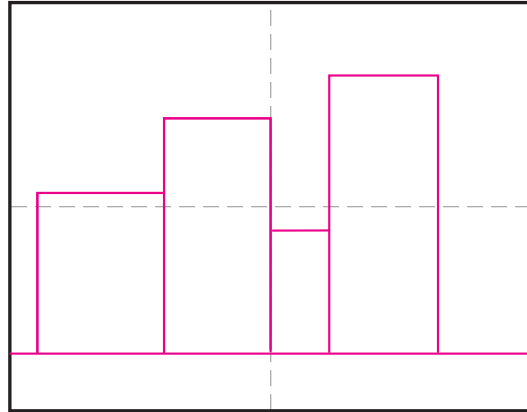


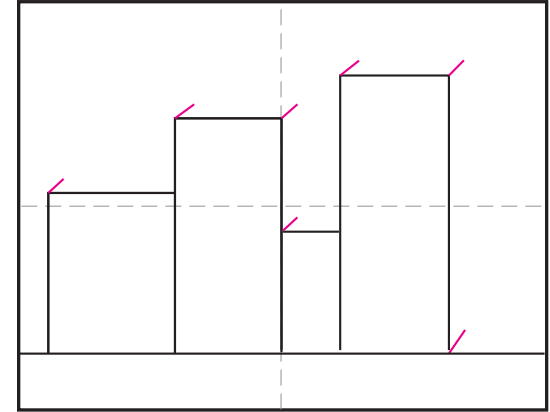
How to Draw Buildings



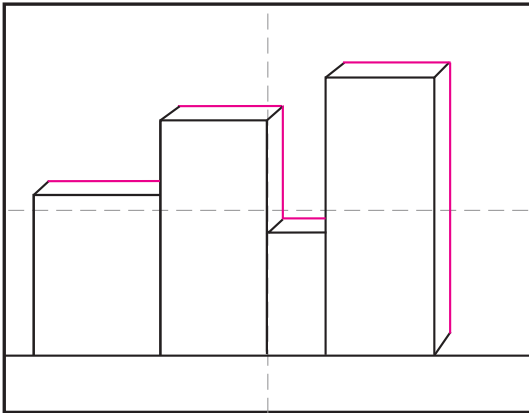
1. Scan to see my Draw Buildings YouTube video.



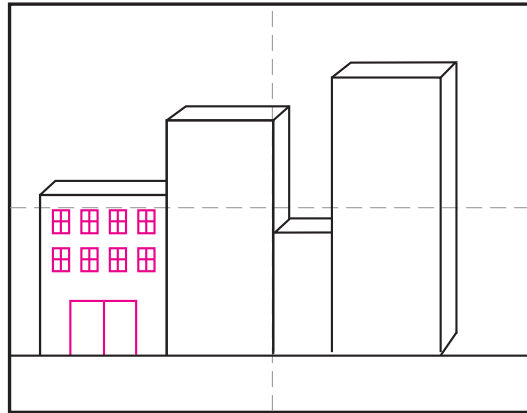
2. Draw a horizon line and rectangles above.



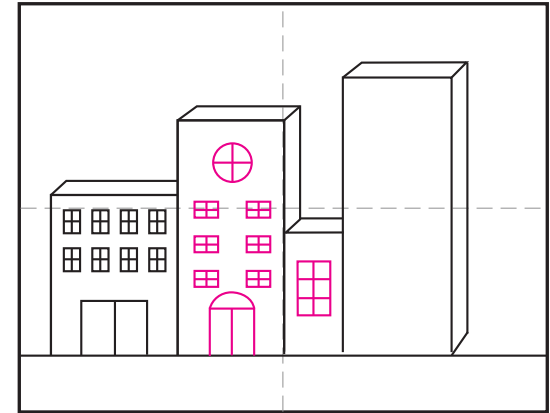
3. Draw 45° angle lines at corners shown.



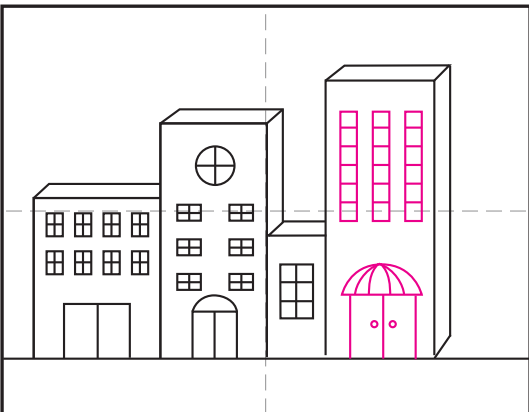
4. Connect ends with straight lines.



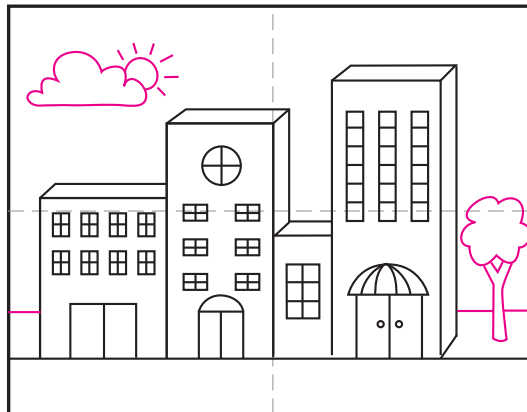
5. Start adding doors and windows.



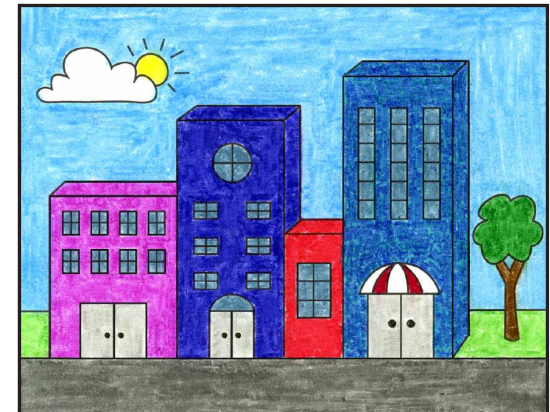
6. Continue adding doors and windows.



7. Finish the doors and windows.



8. Add a tree, cloud and sun.



9. Trace with a marker and color.

Buildings

