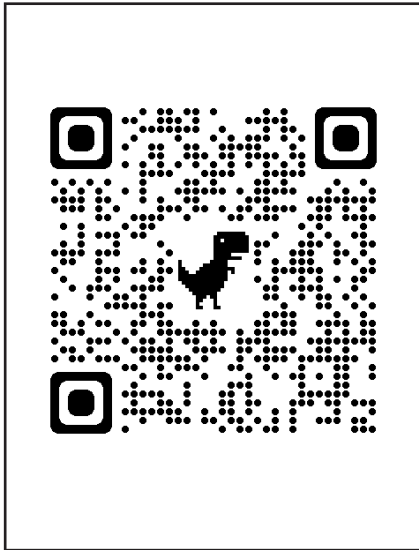
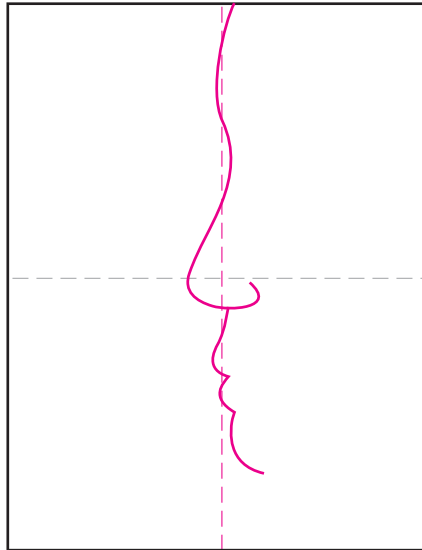


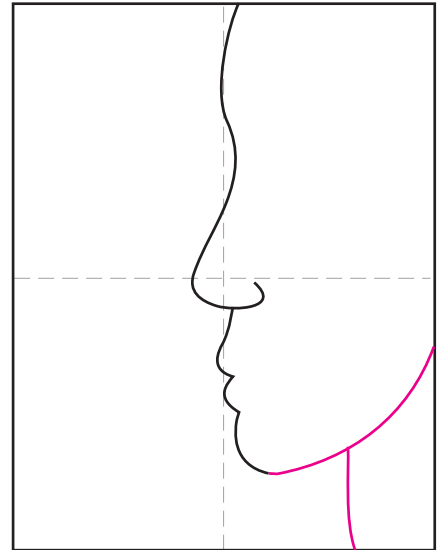
How to Draw like Picasso



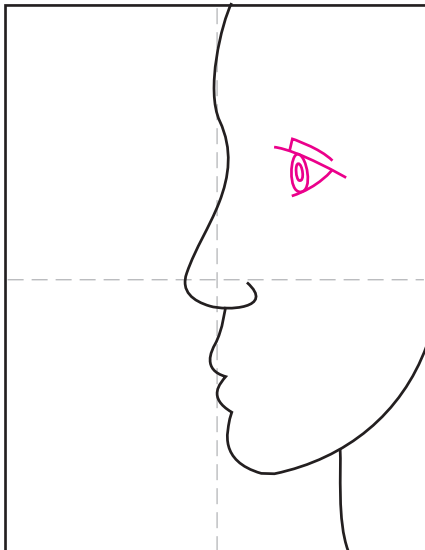
1. Scan to see a YouTube video.



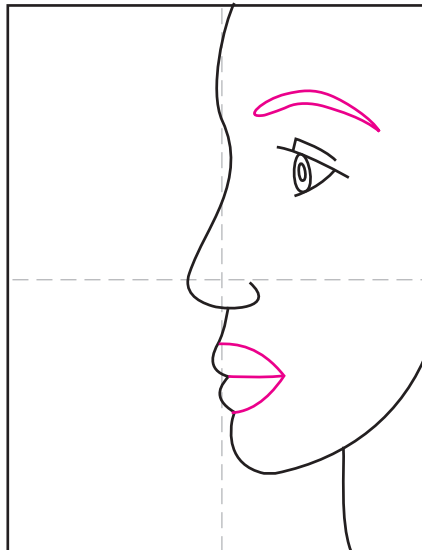
2. Start the profile as shown here.



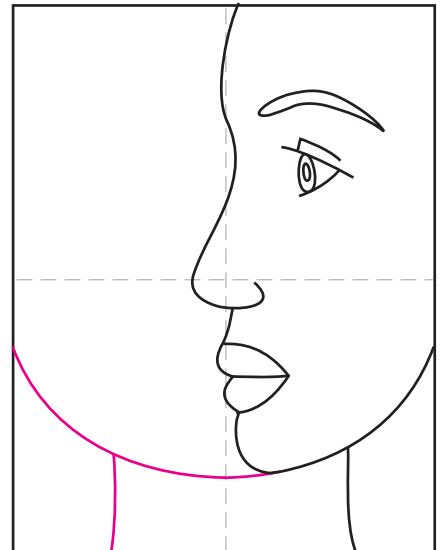
3. Add the chin and neck.



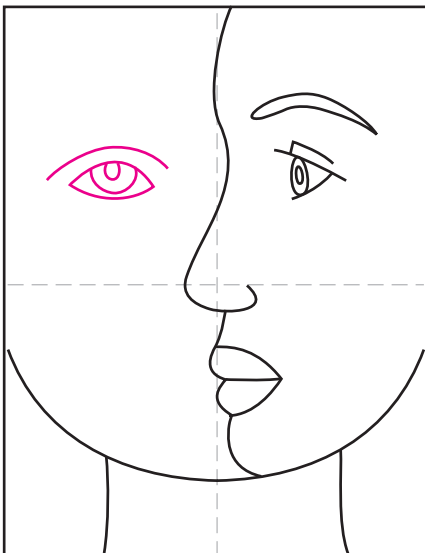
4. Start the profile eye.



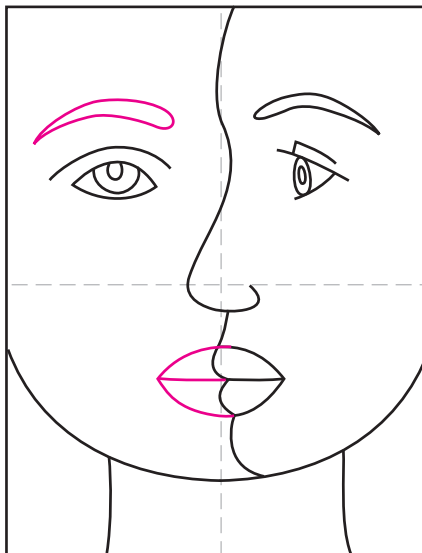
5. Finish with brow and mouth.



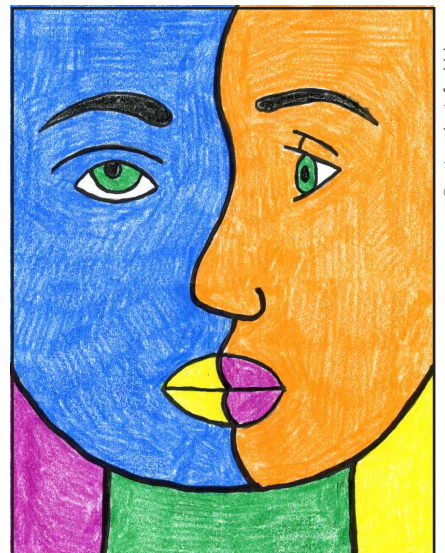
6. Continue the chin line, add neck.



7. Draw the front view eye.



8. Finish with the brow and lips.



9. Trace with thick marker and color.

Picasso

