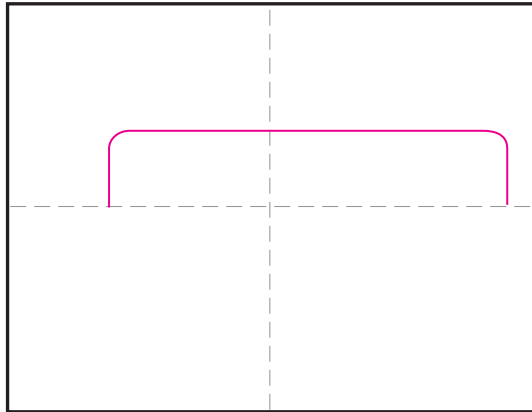
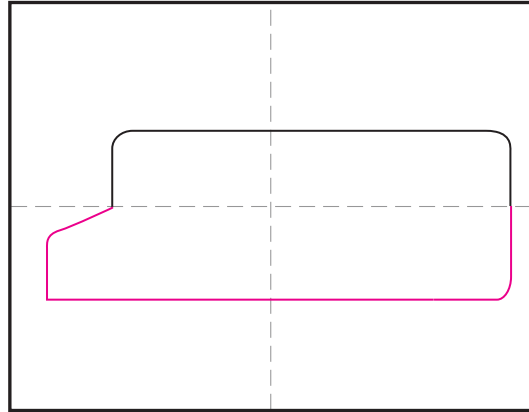


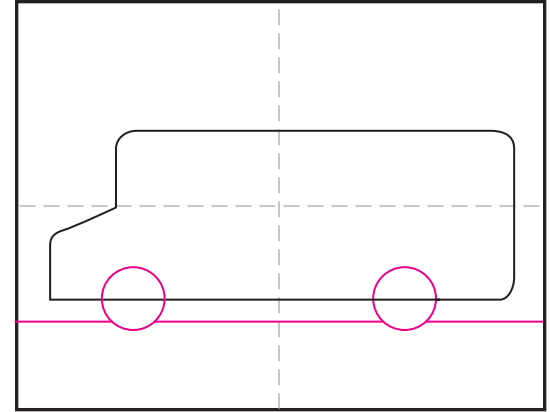
How to Draw a School Bus



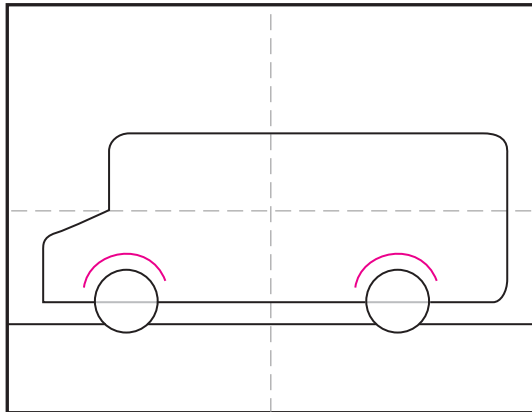
1. Start the top half of the bus.



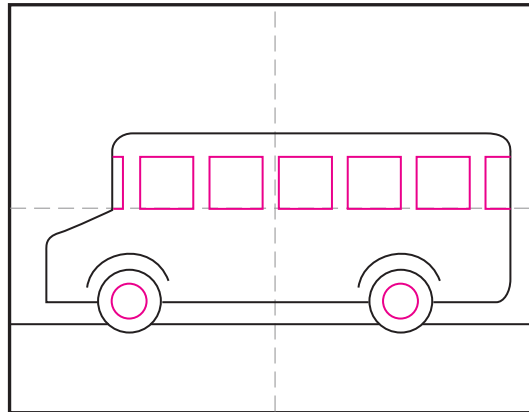
2. Add the bottom half of the bus.



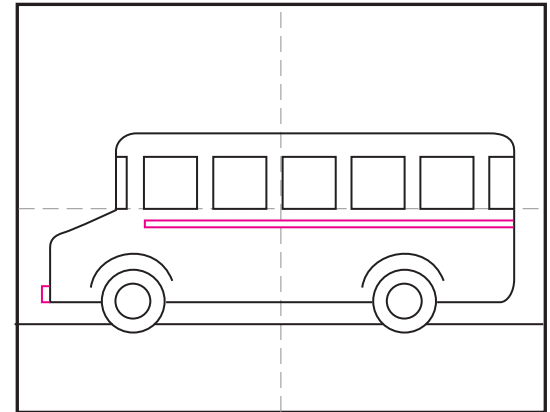
3. Draw two wheels and the ground line.



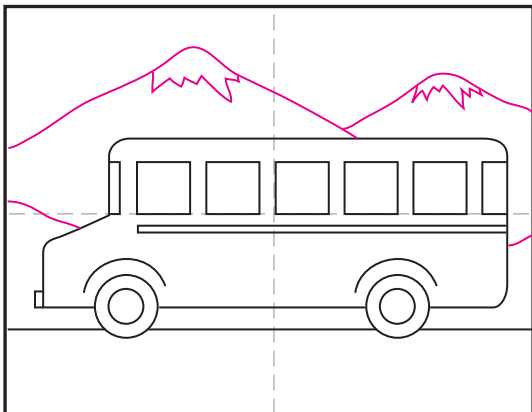
4. Erase inside the wheel, add fender lines.



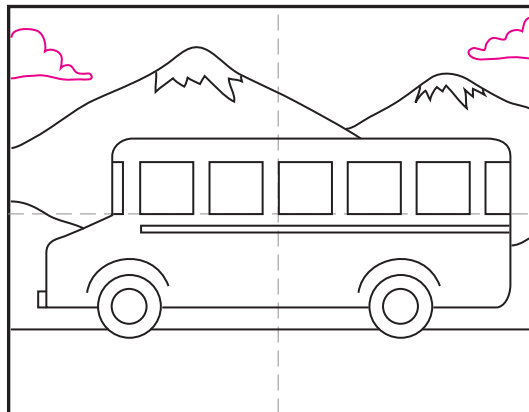
5. Draw the hub caps and windows.



6. Add front bumper and stripe.



7. Draw a background.



8. Add a sky with clouds.



9. Trace with a marker and color.

School Bus

