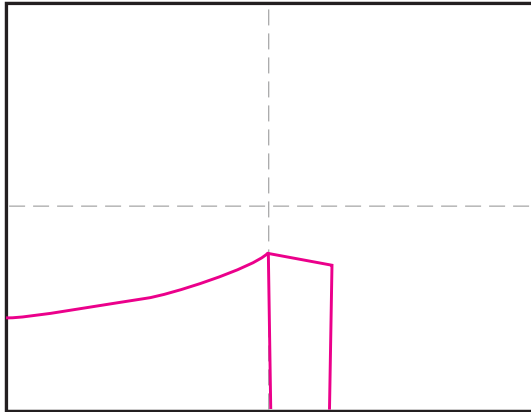
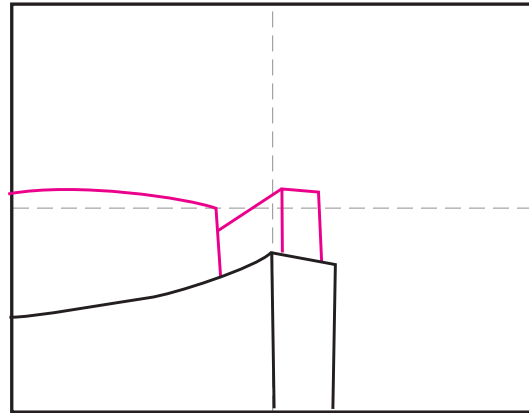


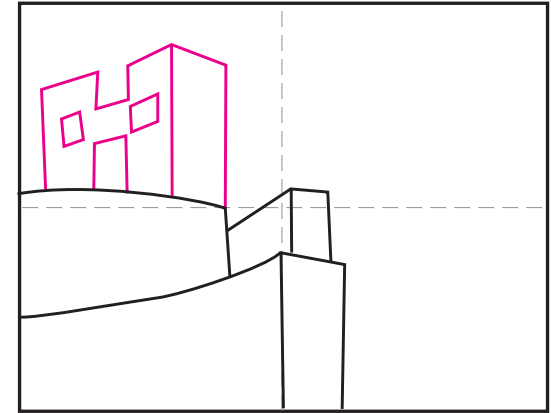
Draw the Mesa Verde



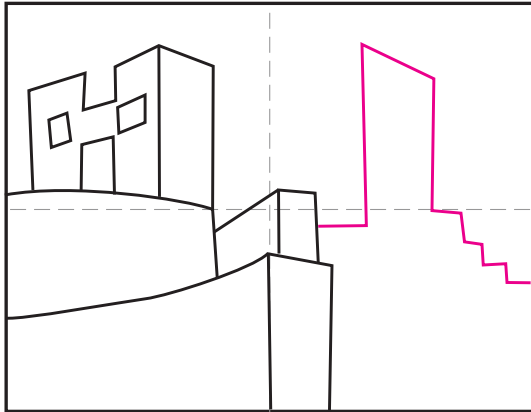
1. Start with a curved wall.



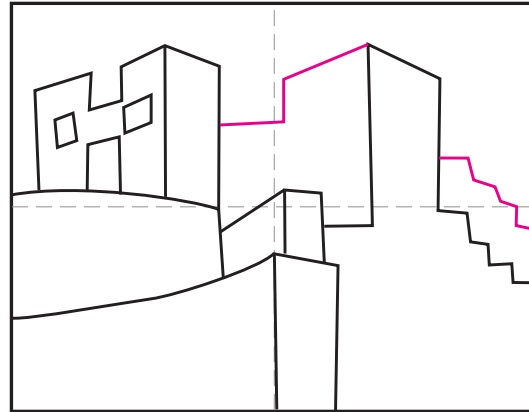
2. Add two more wall sections on top.



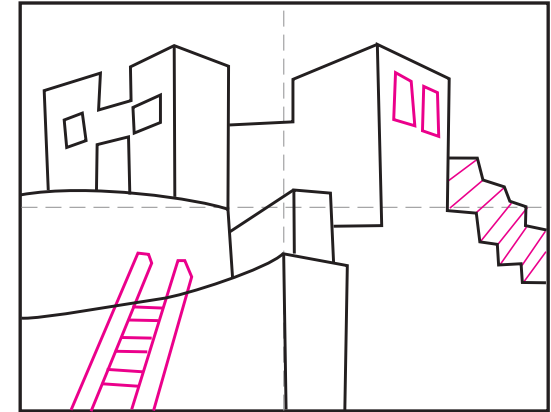
3. Draw a simple building shape on the left.



4. Start the part of a wall on the right.



5. Add the angled lines shown.



6. Draw windows, stair lines and a ladder.



7. Add lots of broken stone shapes on the walls.



8. Finish with long stone lines in back.



9. Trace with a black marker and color.

Mesa Verde



Mesa Verde Coloring Page

