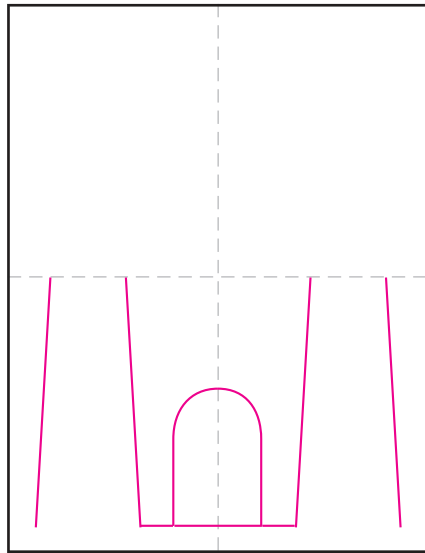


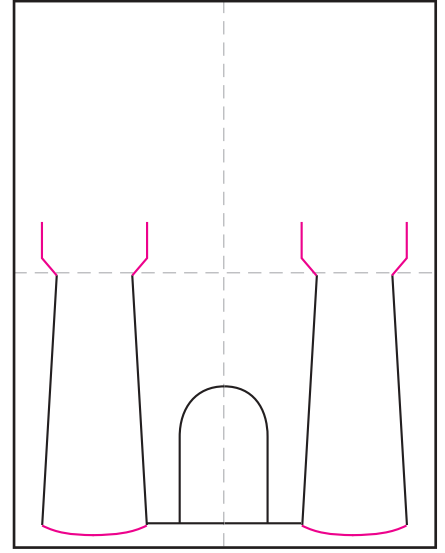
Draw a Castle



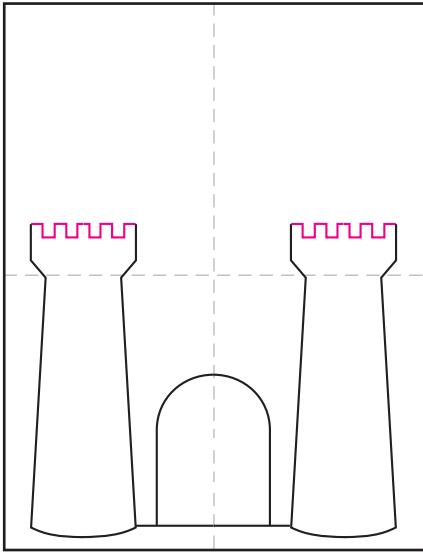
1. Scan to see a YouTube video.



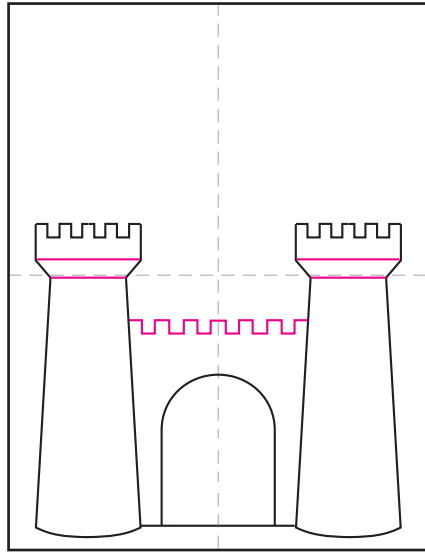
2. Draw the door, start the pillars.



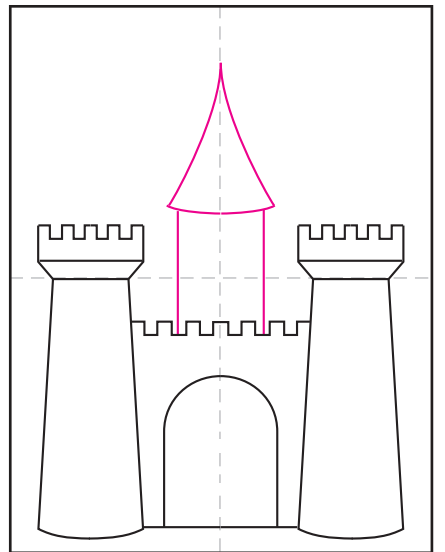
3. Add tops and bottoms of the pillars.



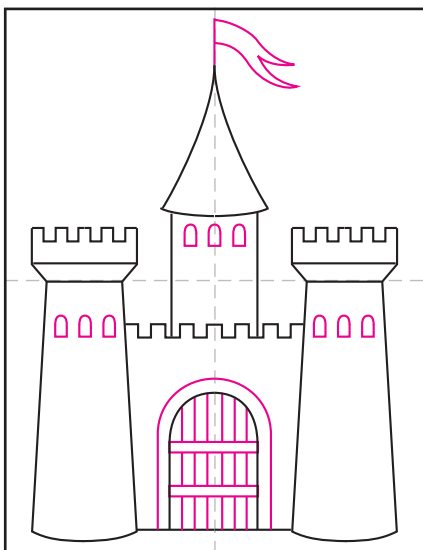
4. Finish with stair step lines across.



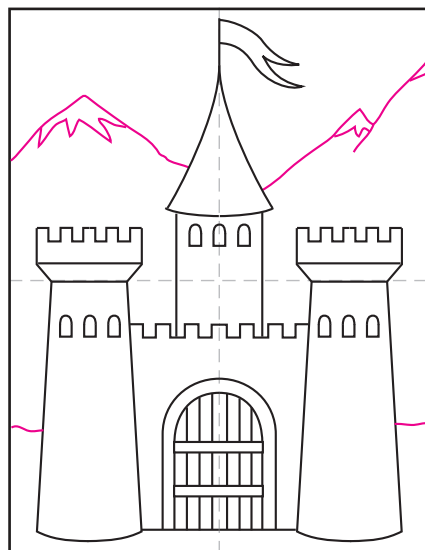
5. Draw top of wall, add lines to pillars.



6. Draw the center tower in back.



7. Add windows, door lines and flag.



8. Draw mountains in the back.



9. Trace with marker and color.

Castle



