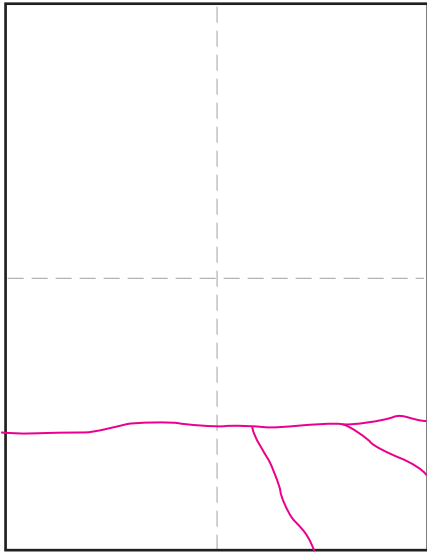
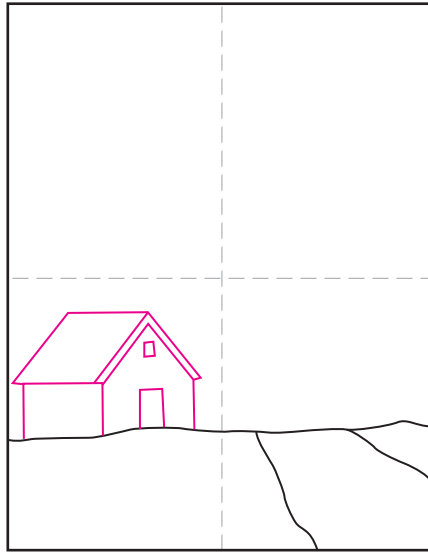


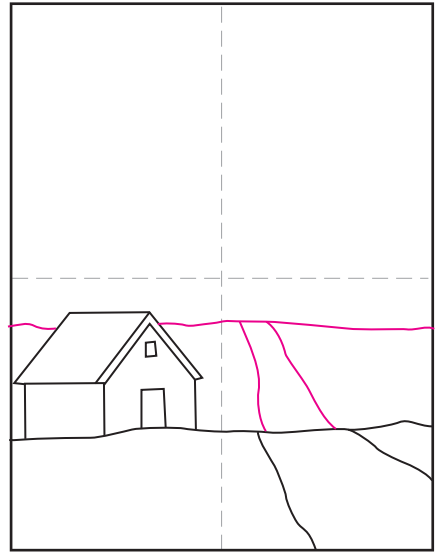
How to Draw Scenery



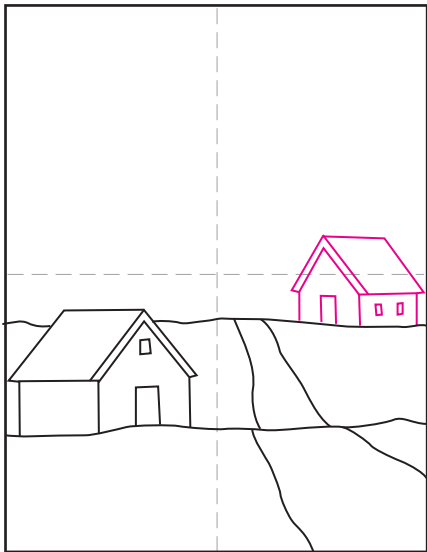
1. Draw the foreground line and road.



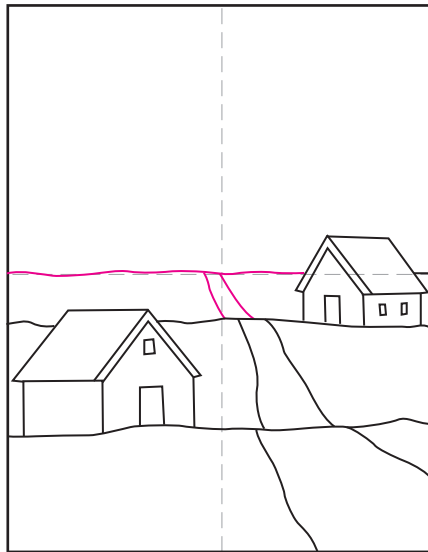
2. Add a large house on the left.



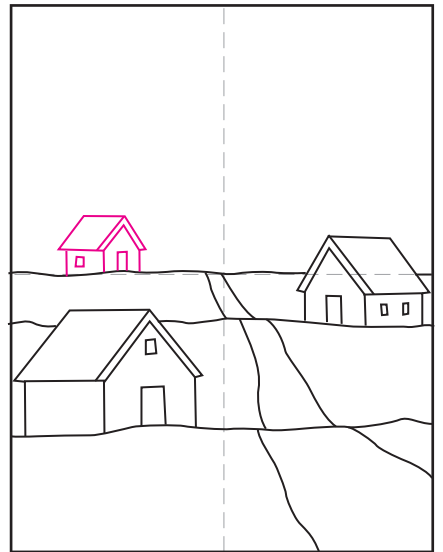
3. Draw the middle ground line and road.



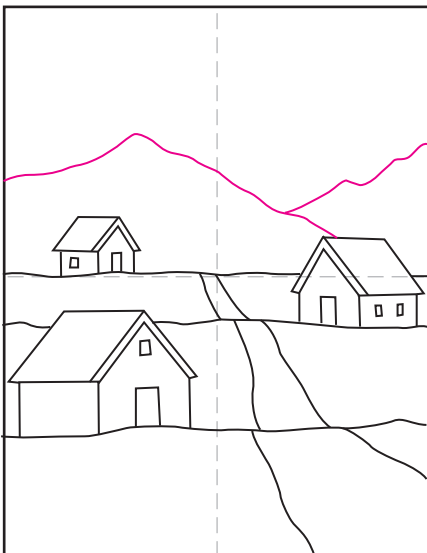
4. Add a medium size house on the right.



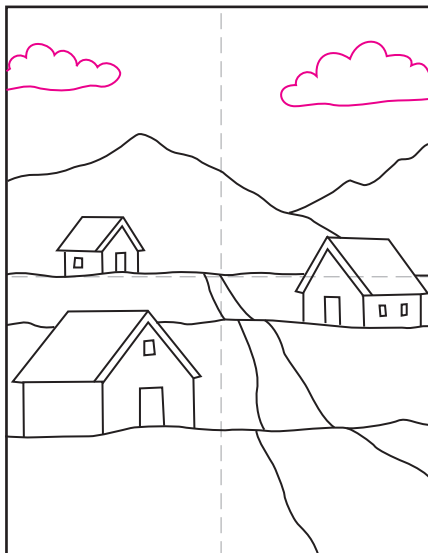
5. Draw a background line and road.



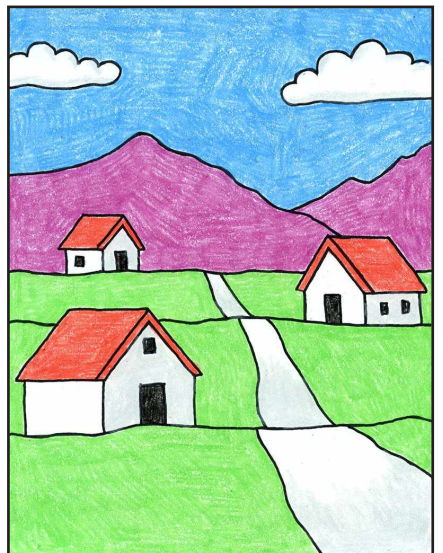
6. Draw a small house on the left.



7. Add mountains in the background.



8. Finish with some clouds in the sky.



9. Trace with a marker and color.

Scenery

