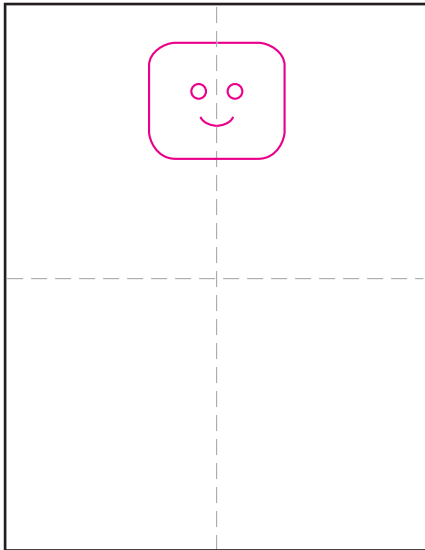
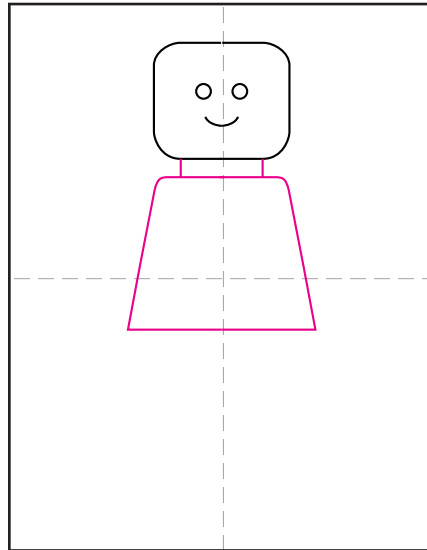


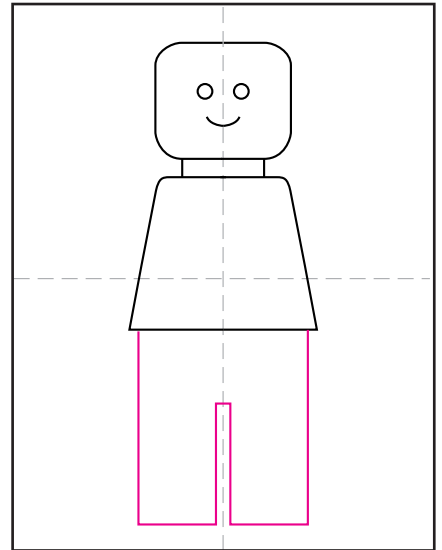
# Lego Self Portrait Tutorial



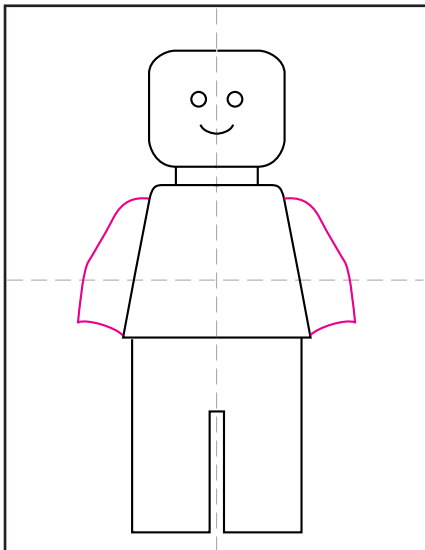
1. Draw a rounded rectangle head.



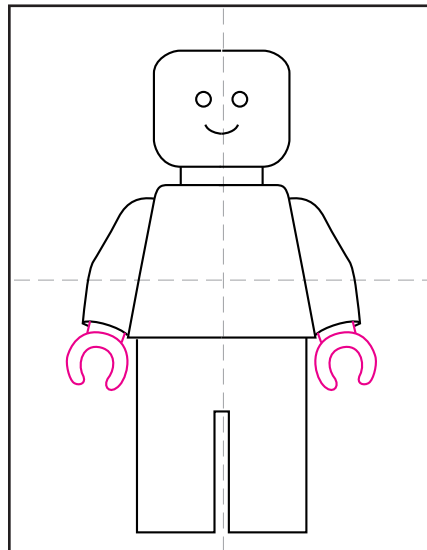
2. Add a neck and shirt shape below.



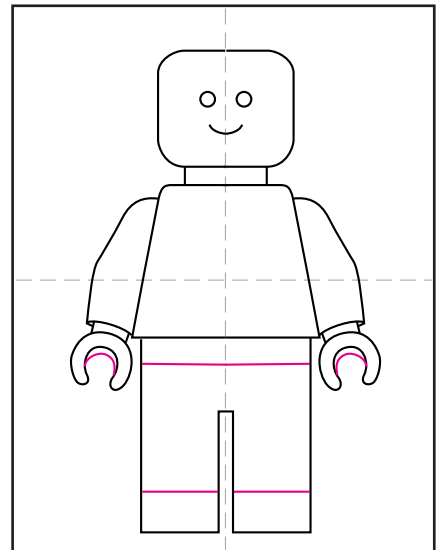
3. Draw the two legs.



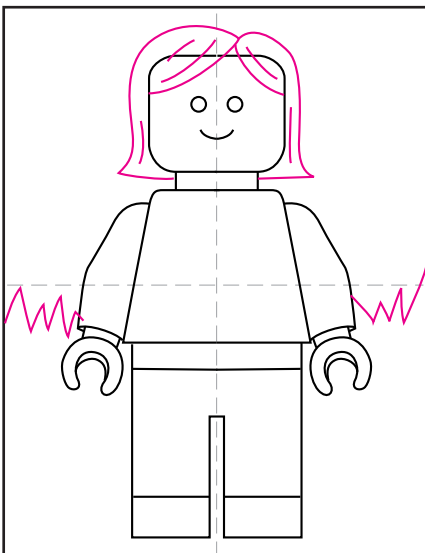
4. Add two sleeves as shown.



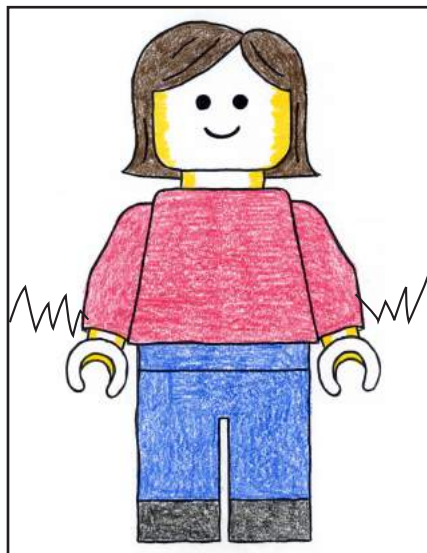
5. Draw the rounded hands.



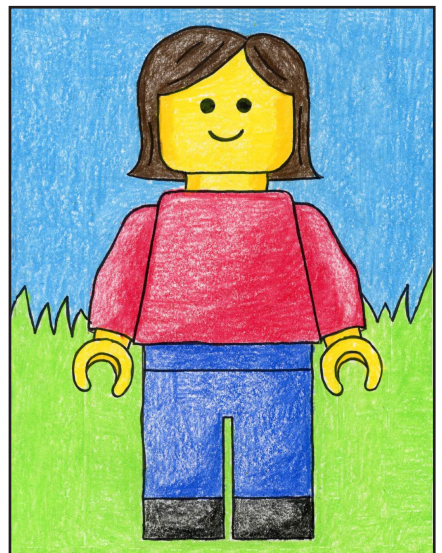
6. Add details for hands, pants and shoes.



7. Draw hair style over the head. (See page 3 for ideas). Erase lines. Add a background.



8. Trace the drawing with a black marker. Color everything with medium pressure. Color side of head with golden yellow.



9. Add extra pressure to make shadows. Fill the head and hands with light yellow. Color the background.



# Lego Self Portrait





