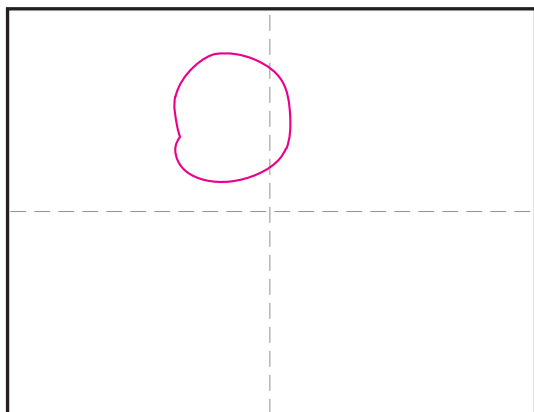
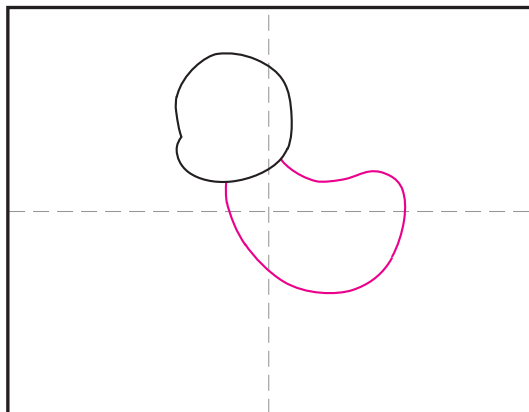


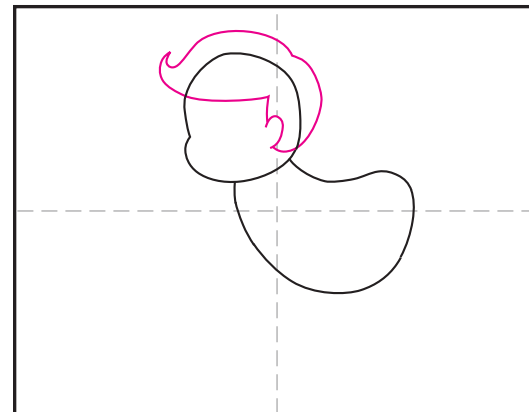
How to Draw Cupid



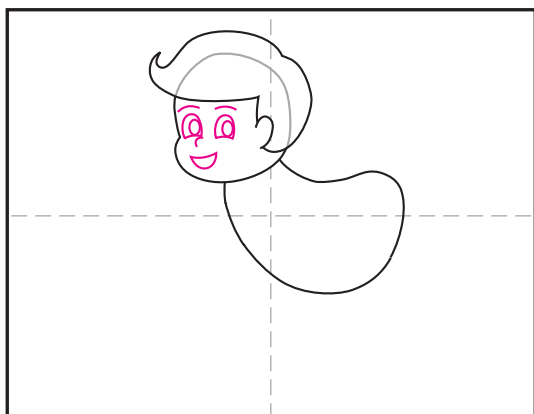
1. Draw the head with a cheek shape on left side.



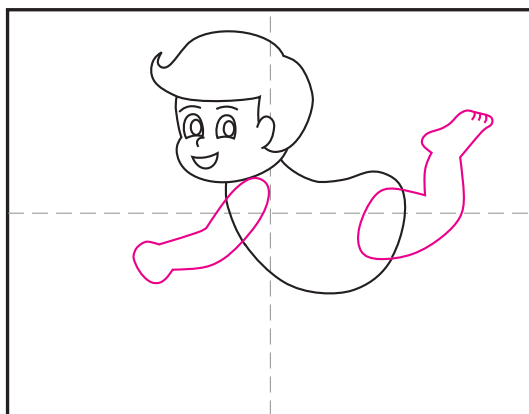
2. Add the torso shape below.



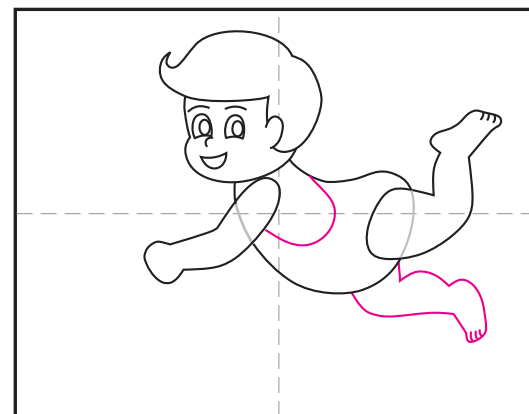
3. Draw the hair around the head, include the ear.



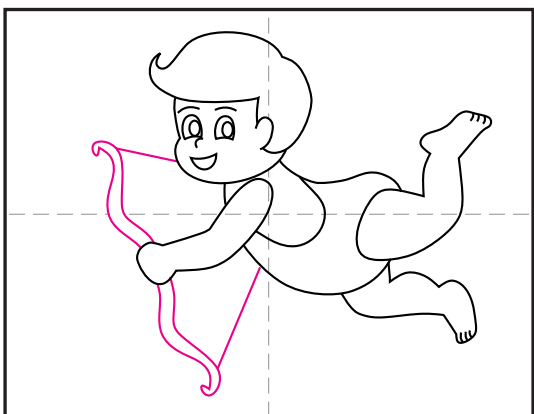
4. Erase head line and add a cartoon face.



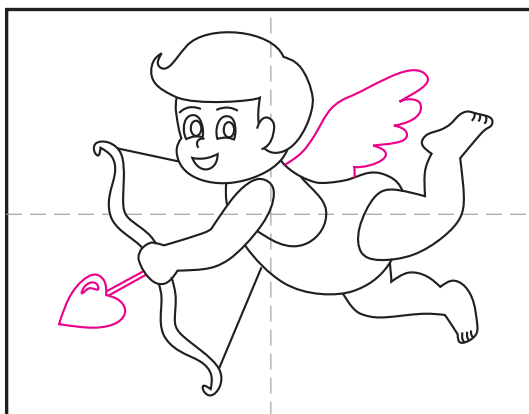
5. Draw the front arm and bent chubby back leg.



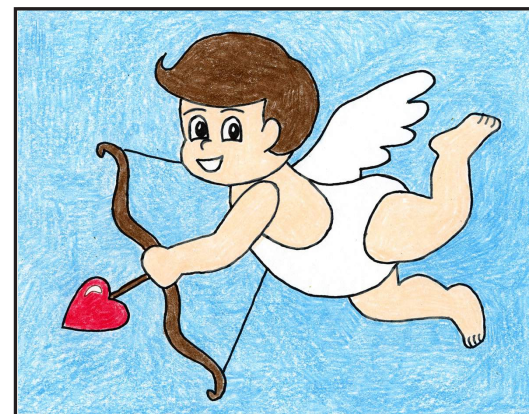
6. Add line for clothing and other back leg.



7. Draw the bow and strings.



8. Finish with heart-tipped arrow and wing.



9. Trace with a marker and color.

Cupid

