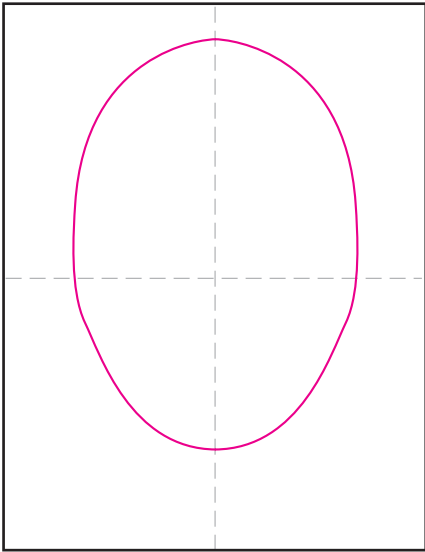
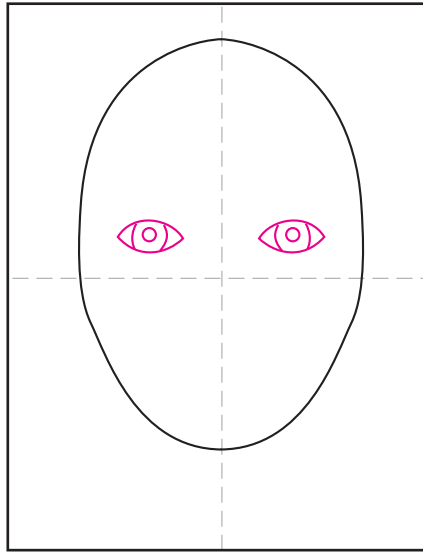


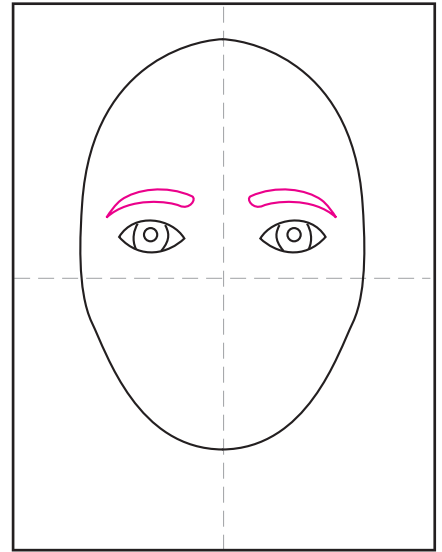
Draw a Charcoal Self Portrait



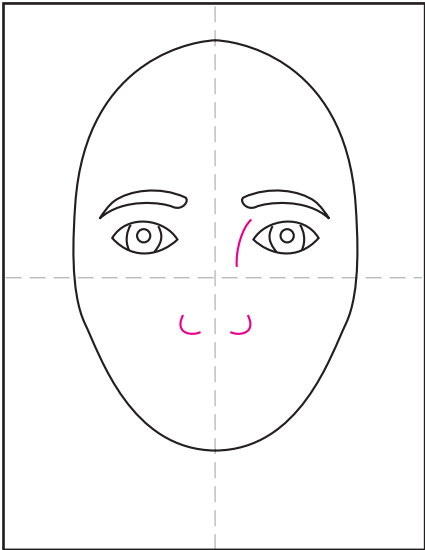
1. With a pencil, draw a LARGE oval so the features can be as big as possible.



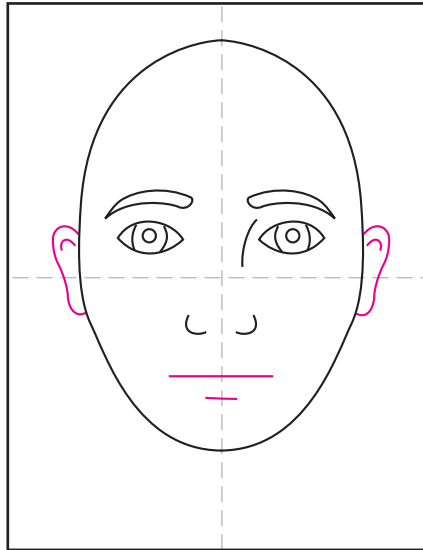
2. Draw two simple eyes (no lashes).



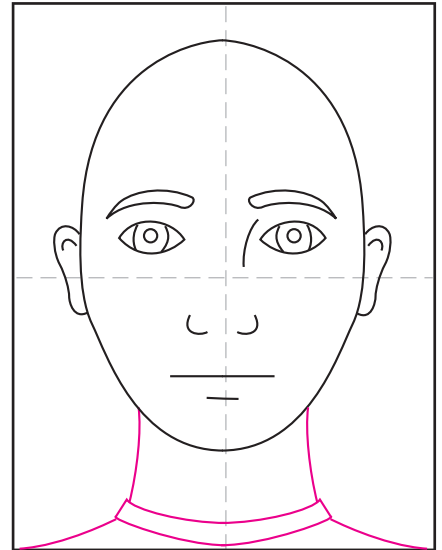
3. Add a brow above each eye.



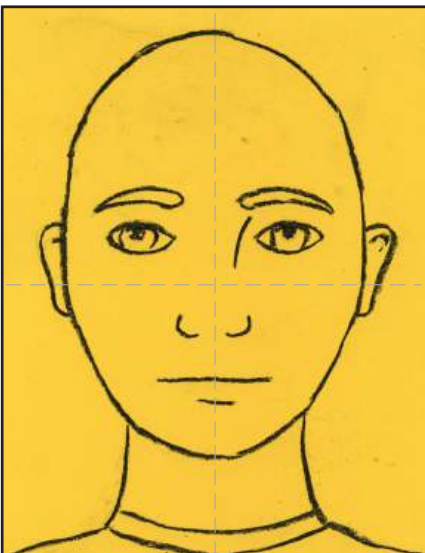
4. Draw a simple nose.



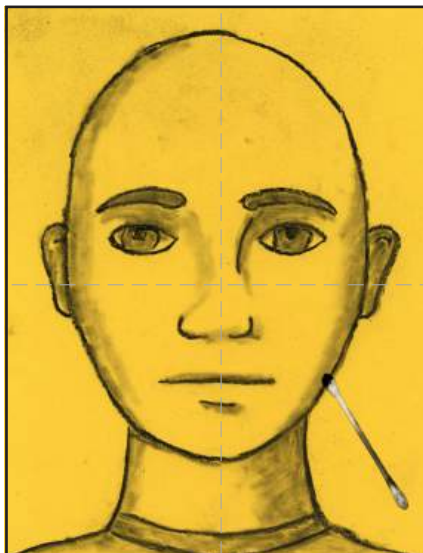
5. Add mouth line and two ears.



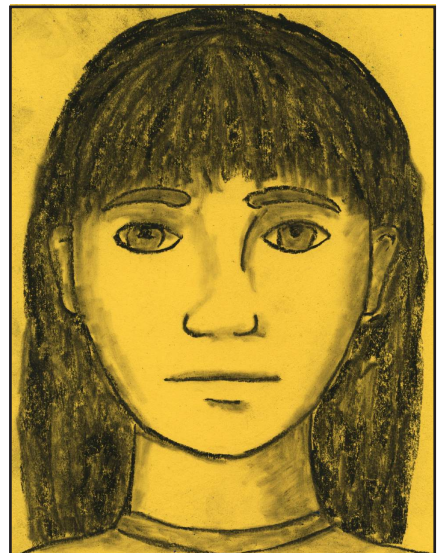
6. Draw neck and shoulders.



7. Trace the pencil drawing with a stick of charcoal. Note: It will get smudgy.



8. Use a Qtip to blend the charcoal color and spread it to make some shadows.



9. Finish by drawing charcoal lines for hair, and blend to soften the color. Work lightly to create the least amount of dust.

Charcoal Self Portrait

