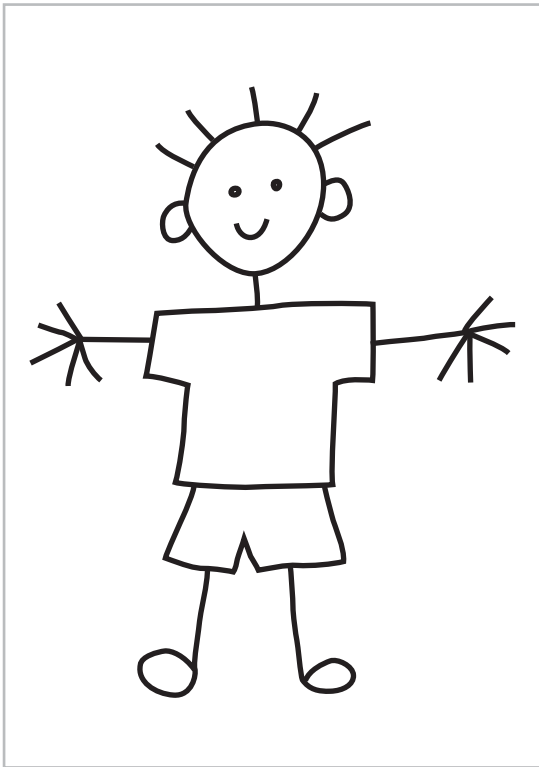
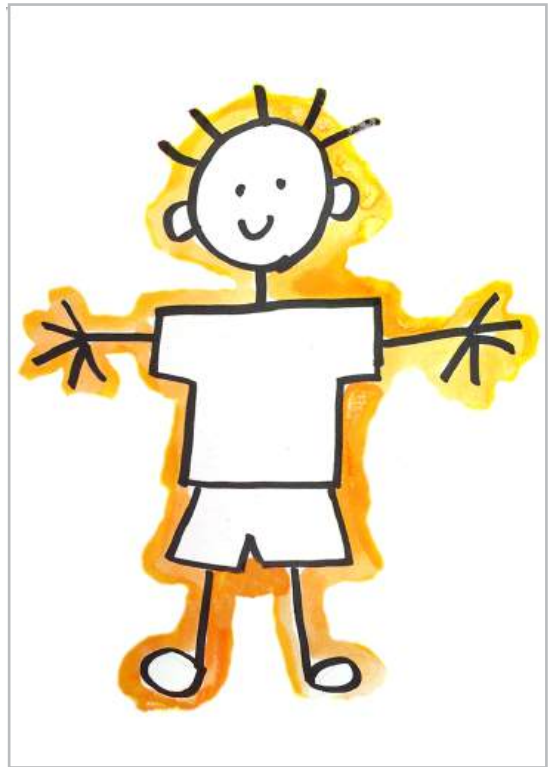


How to Draw a Stick Person



1. Draw yourself as a stick person, using ONLY LINES for the legs, hands, fingers and hair. Trace the drawing with a thick black permanent marker.



2. Outline the stick person with a thick line of watercolor paint. Work slowly and try not to get any paint inside the body so it stays white.



3. While still wet, add more rings of color, taking care to overlap just a bit to make the colors bleed.



4. Repeat with more rings until the background is filled. Leaving the inside of the body white will create contrast and bring attention to the stick drawing.

Stick Person

