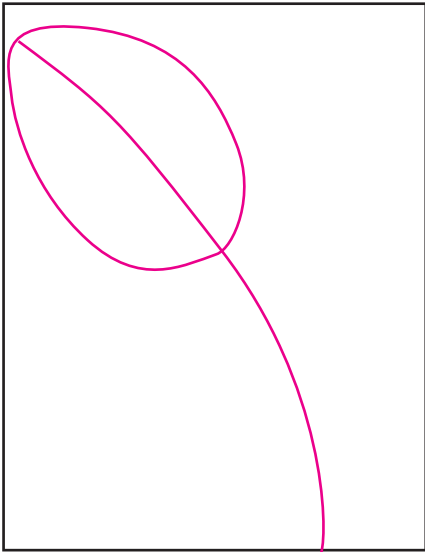
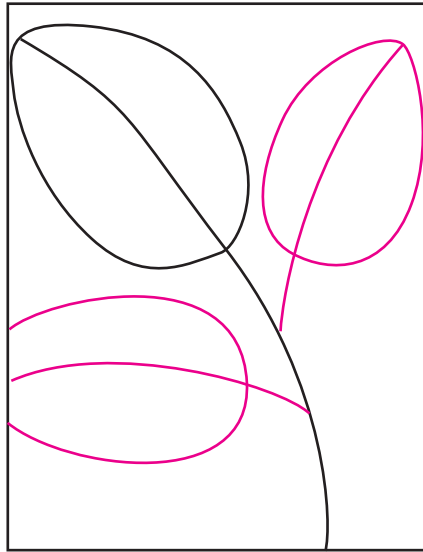


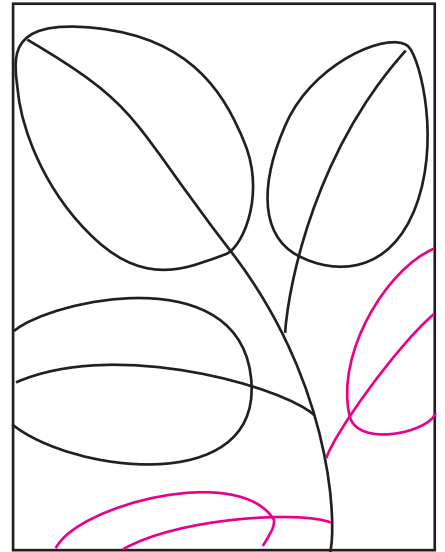
Chalk & Glue Leaves



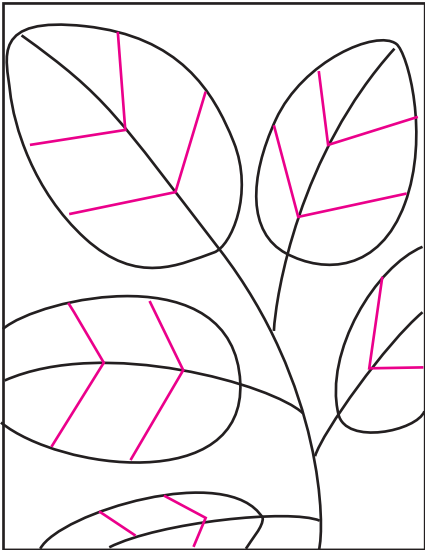
1. Draw a tall leaf that touches the two sides of the paper.



2. Add two more leaves to fill the space.



3. Draw two more leaves that are going off the paper.



4. Add one or two V shapes inside.



5. Trace the pencil lines with white Elmer's glue.



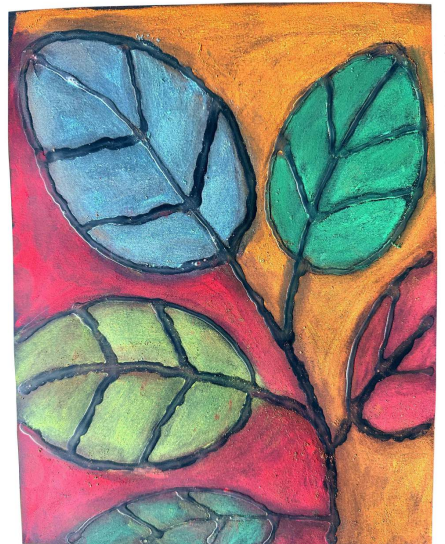
6. Dry FLAT for about 24 hours, the glue lines will dry clear.



7. Fill each area with chalk pastel. Rub it into the paper with your fingers.



8. Use a Q-tip to clean chalk off of the dried glue lines.



9. Spray with fixative to keep chalk from spreading.

Chalk & Glue Leaves

