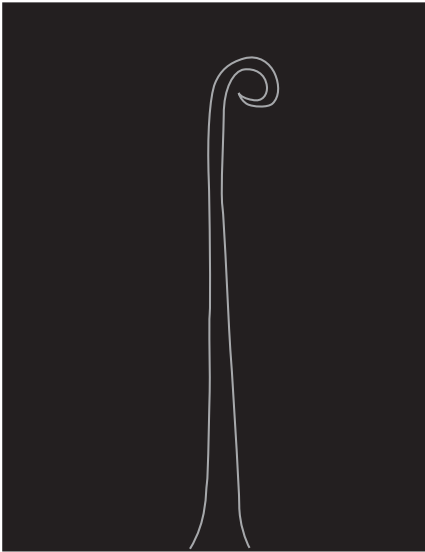


How to Draw like Gustav Klimt



1. Draw the main tree trunk shape.



2. Add large branches on both sides.



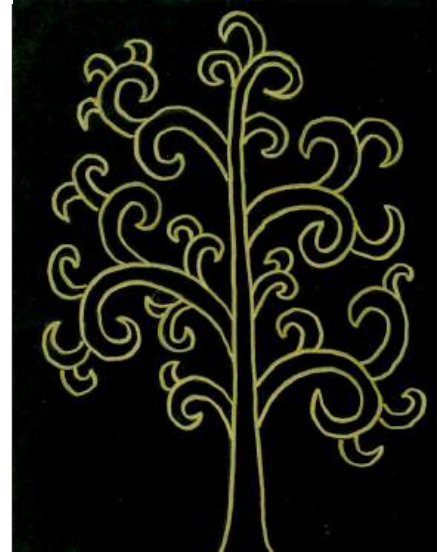
3. Add medium size branches.



4. Continue adding more...



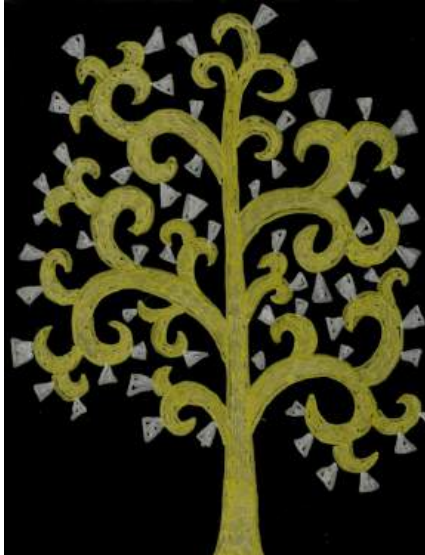
5. Balance out with smaller curls.



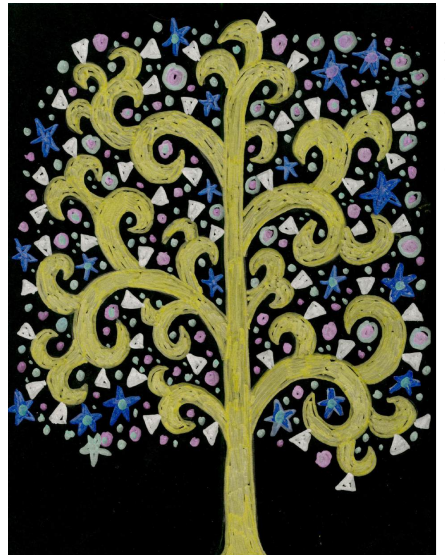
6. Trace with a gold metallic marker.



7. Fill in the tree with the gold.



8. Add small triangles to branches.



9. Finish with more colors, and shapes and dots. The more the better.

Draw like Gustav Klimt

