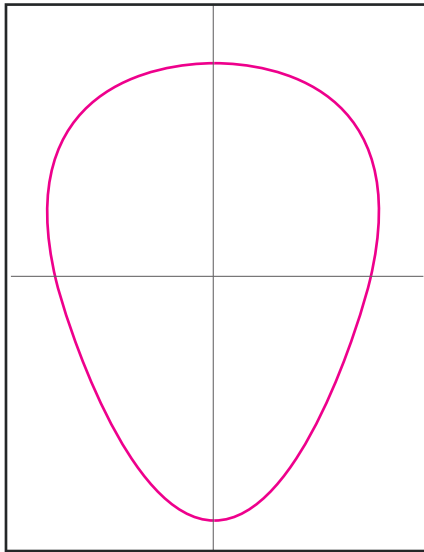
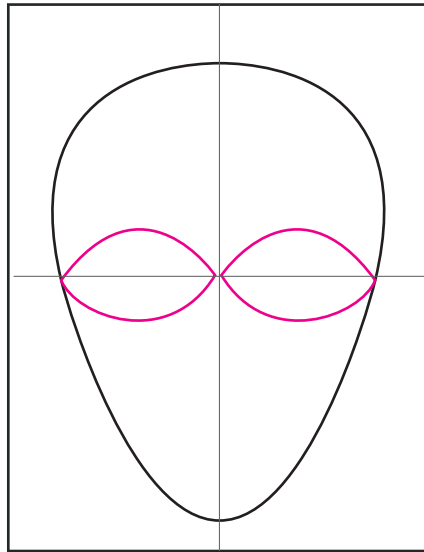


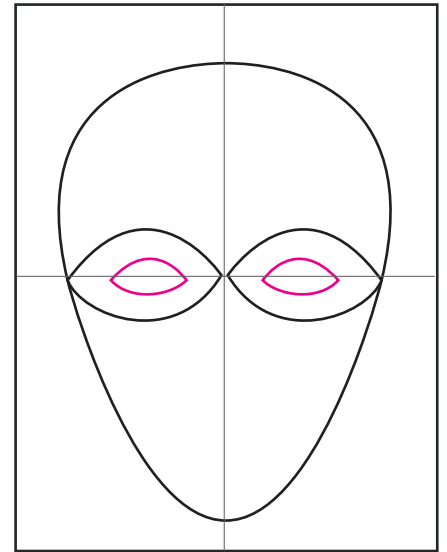
# Lois Mailou Jones Mask Art Lesson



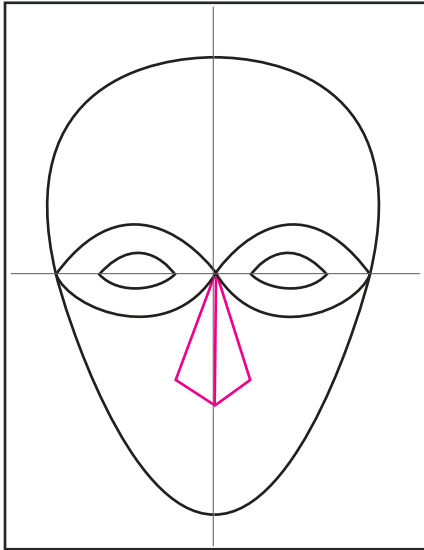
1. Draw the head shape on watercolor paper, it will make the colors brighter.



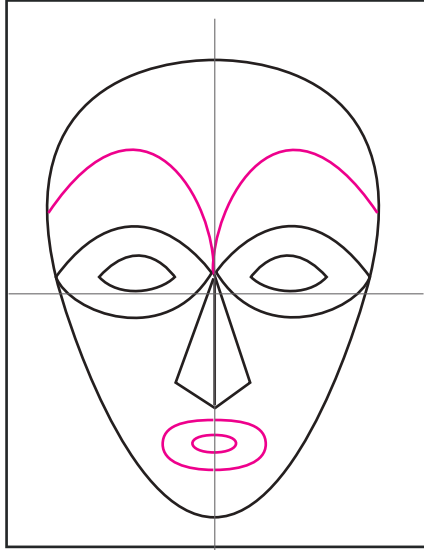
2. Draw two large eye shapes that touch.



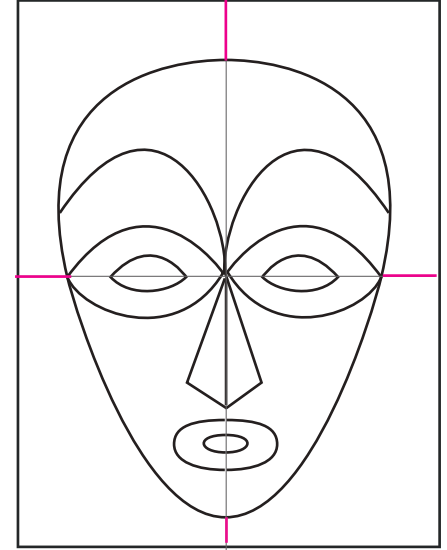
3. Add smaller eye shapes inside.



4. Add a diamond shaped nose.



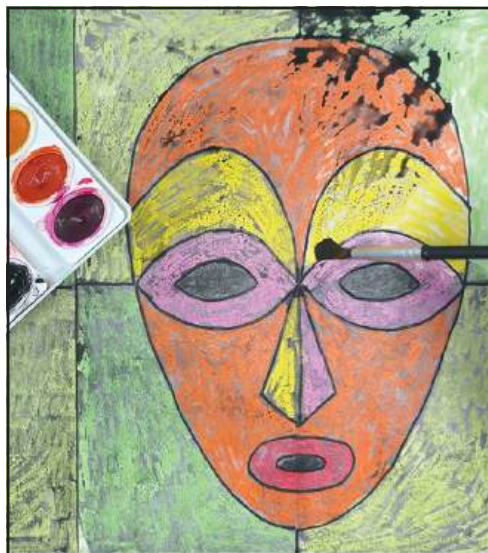
5. Add the eyebrows and the mouth.



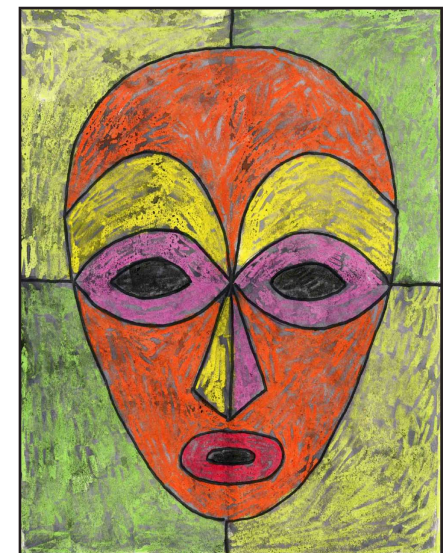
6. Divide the background.



7. Trace lines with a permanent black marker, Color with crayons, leaving texture (permission to scribble!)



8. Paint sections with black watercolor paint, dab dry with a tissue, and continue.



9. Continue until all is painted and let dry.

# Lois Mailou Jones Mask Art Lesson



